

...they all lived happily ever after.

MAYFIELD & FIVE ASHES NEWSLETTER



Gabriel Interiors

of Mayfield

FULLY
FITTED

Made To Measure Curtains ~ Blinds ~ Shutters
Soft Furnishings ~ Tracks and Poles ~ Interior Design Advice

FREE
ESTIMATES

Please phone or email to book an appointment, for design advice or measuring, at the showroom or in your own home. We have a vast array of fabrics and materials to choose from and a breadth of experience to share with you.

🏠 1 Church View, High St, Mayfield TN20 6AB



01435 873670



www.gabrielinteriors.co.uk

The Hair Studio



FREE CONSULTATIONS
20% OFF*

Tel: 01435 873323

7 High Street • Mayfield • East Sussex TN20 6AA

www.hairstudio.uk.com

*your first visit (cut and finish only)

burnett's

Individual Property : Individual Service

www.burnetts-ea.com

We are proud to be recognised at the EA Masters awards in 2022 as one of the top 10% Estate Agents in the UK for sales!

Find us in the Best Estate Agents Guide 2023

Or even better – if you are selling, make us your number 1 choice!

Mayfield Office

3 Church View House
High Street
Mayfield
TN20 6AB

01435 874450

Wadhurst Office

Clock House
High Street
Wadhurst
TN5 6AA

01892 782287



Front cover: Pupils from Mayfield CEP school celebrating World Book Day. Thanks to all the organisations for their photographs. Please do send us your images to mayfieldnewsletter2012@gmail.com

WELCOME FROM THE EDITORS



WELCOME FROM THE EDITORS

Welcome to our April edition which contains a cornucopia of fascinating articles. We appreciate that not all of you will read it from cover to cover (!) but please do take the time to sit down with a cup of your favourite beverage and discover what is happening in our wonderful Parish. In particular, **we would like to draw your attention to Wealden**

District Council's Draft Local Plan. This is now out

for public consultation and outlines where the new Wealden District leadership, a coalition of Liberal Democrats and Green Councillors, intends to build 15,729 new homes between now and 2040. The Draft Local Plan consultation period will run from Friday, 15th March to Friday 10th May. For more information make a point of reading Nus Ghani's submission on Page 30. We cannot complain if we do nothing!

Jeanette Hore & Philip James



DEADLINES AND HOW TO CONTACT US

MONTHLY SUBMISSIONS to mayfieldnewsletter2012@gmail.com by noon on the 15th of the month. Please include your name, organisation, or the topic of your copy in the 'Subject' line of your email. Submissions must show the subject, name of author and a contact number in case of queries. No anonymous submissions will be accepted.

FOR BLACK/WHITE & COLOUR ADVERTISING email: mfanadvertising@gmail.com.

DEADLINE FOR Copy and Bank/cheque payments for ADVERTISERS 10th of each month.

FOR ANNUAL £25 SUBSCRIPTIONS: You can set up a standing order and pay online as follows: - £25 to Mayfield & Five Ashes Newsletter; NatWest Bank, Sort Code 60-10-30; Account No. 60849975 or by cheque sent to Graham Soar, Owl Lodge, Tubwell Lane, Crowborough, TN6 3RJ. **Payment must be received by the 19th of the month to receive the following month's edition by post.** Don't forget to also send us your name and address - you can do this by email to: mfansubscriptions@gmail.com

USEFUL INFORMATION

BRUSH UP YOUR LIFESAVING SKILLS - MAYFIELD AND FIVE ASHES

Heathfield & Waldron First Responders have kindly agreed to hold two CPR demonstrations, one in Mayfield, one in Five Ashes. As we now have four defibrillators in the Parish, we thought it was important to follow this up with CPR demonstrations. The first one will be held in the Scout Hut, Mayfield on **Tuesday, 23rd April at 8pm** and the second

on **Tuesday, 21st May at 6.30pm** at Five Ashes Village Hall. Each location can hold a maximum of 20 people so please do apply in good time. Contact Jeanette Hore on jeanette.overleigh@yahoo.co.uk or 872975 to reserve your place for Mayfield, and Geoff Gregory for Five Ashes on geoff.gregory@outlook.com or 01825 830642.

LOCATION OF DEFIBRILLATORS: Five Ashes Primary School - accessible from the pavement; Woodhill Surgery - in the entrance porch; Mayfield Primary School - on the wall by steps to main entrance; Telephone Kiosk outside the Rose & Crown. Defibrillators are housed in weatherproof boxes and are accessible 24/7. Full audio prompts guide you through as soon as you open the lid.

POST OFFICE NORMAL OPENING HOURS: Monday - Friday 09. 30 – 16. 30; Saturday 09. 30- 1pm. Closed Sunday.

NATWEST MOBILE BANKING SERVICE

The service operates on Mondays (except Bank Holiday Mondays) from 1. 15 to 2. 15pm in the Memorial Hall overflow car park

BUS ROUTE 226 operates 3 days per week on **Tuesdays, Thursdays and Saturdays**. For fare paying customers a single trip to Crowborough is £2.00 and a return fare is £4.00. Concessionary passes are accepted on this service.

Departs from Southmead via the High Street then St. Thomas of Canterbury

Departs Southmead Arrives at Crowborough

10:16 10:47

12:16 12:45

Departs Crowborough Arrives at Southmead

11:45 12:16

13:15 13:46

FEATURES

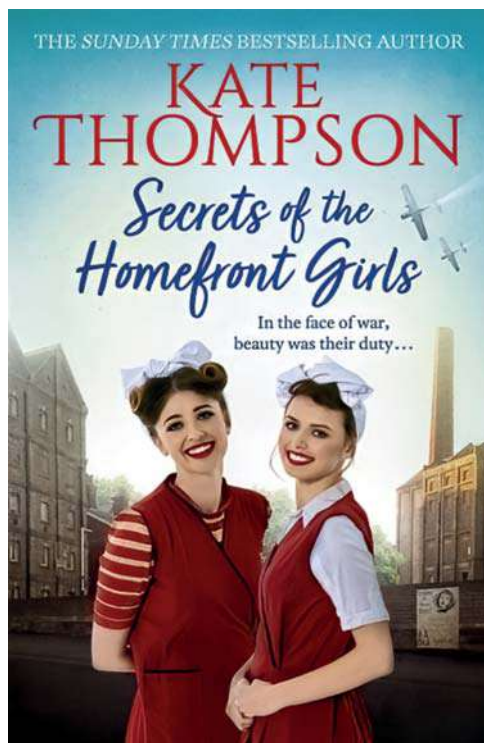
BOOK REVIEW

"Secrets of the Homefront Girls" by Kate Thompson 2019

While light and enjoyable, this novel realistically presents us with a fascinating insight into a time and place barely recognisable today but which lives on in the nation's collective memory. Set in London's wartime East End the heroism and humour of the Cockneys at that time continues to be lauded and is vividly revived in Kate Thompson's racy novel. The author was not born at this time but her research, driven by passionate curiosity, is thorough and comprehensive. She has not only read widely about this era but has interviewed many survivors and their families. The protagonist in this story is Renee Gunn, a lively and determined young woman who holds a good position on the lipstick belt of the local Yardley factory. This was situated among several other factories in East End's Stratford, known locally as "Stinky Alley".

Renee was hugely popular among most of the Yardley girls and while the pay was poor this was compensated by the joy and camaraderie which thrived among them. (This spirit is reflected in the recollections still maintained today among surviving former employees).

There were tragedies of course and at times deep sorrow but the girls were always resilient, firmly believing Churchill's statement that in wartime "Beauty is a Duty". Renee's mother was an indomitable character, well-loved and a little feared in the neighbourhood. Her stepfather Pat is a stubborn character but she has a fond closeness to her older sister, Lily, who moved away for several years to work in Yardley's modern showroom in Hammersmith before unexpectedly returning home. There is an abiding mystery here as to why Lily was absent for so long without contact but this is not revealed until the end of the story. Another family member is the younger son Frankie, a curiously gifted boy and so life at home as well as at work is rarely without incident. Certainly, Renee's workmates are a hair-raising bunch. Under the supervisor, Miss Carmen, the girls on the belt have names like Betty, Joannie, Joycie and Mavis and most get on well with those in the other departments. There is of course one bad apple whose true nastiness is revealed later in the book but mutual support is maintained. High spirits are needed to stomach the diverse and gut-wrenching odours which continually waft in from the neighbouring factories so giving the alley its name. One bright light in Renee's life is her engagement to Alfie, a seaman on leave, but this is overshadowed by his soon having to return to sea. There is also sadness concerning a young Jewish refugee who has just arrived in the neighbourhood with her mother and who has begun work at Yardley's. She is generally well received and is outstandingly brave even though her father's whereabouts is unknown. The story does not conclude happily and towards the end there is a shocking account of a huge air-raid delivered in graphic detail.



Nevertheless, the Cockney spirit of defiance in adversity still endures and the author's notes at the end about her sources make for intriguing reading. While fictional, much of the book is influenced by real-life events and the history of Yardley is told here. With so much done to ensure the welfare of its employees it is unsurprising that the firm in its heyday is recalled with such affection. This way of life, however, was not to last and Yardley eventually moved its premises to a modern factory in Essex, as did most of its neighbouring firms.

My main criticism of this novel is perhaps its over-padding and excess sentiment in some parts, but otherwise an enjoyable read.

Cynthia M. Baker



A KING IN MAYFIELD

The starting point for a Mayfield Festival event in April is the Grade One building, the Great Hall, now Mayfield School Chapel. More than seven hundred years ago Mayfield was the site of a fierce contest between Church and State, Archbishop Winchelsey (of Canterbury) and King Edward I. King Edward made three visits to Mayfield as part of his plan to wrest money from the Church to pay for his war in Scotland.

When the Archbishop threatened to excommunicate his King, the response was the usual aggressive outburst: "You look after the spiritual and I will threaten your estates on earth." With that, the King exiled the Archbishop. This fight resulted in a Great Hall being built around 1310. This international story will be uncovered on 27th April by local historian Tim Cornish and Dr Joanna Weddell, Head of the History of Art at Mayfield School, which will take place in the school chapel.

The remote Manor in the depths of the Sussex Weald was an unlikely venue for this conflict, due to its inaccessibility through the forest and mud. However, the King was convinced that he had a strong interest here. Archbishop Boniface, who

set up the Mayfield Palace, was his Great Uncle and Edward owned the eastern half of the parish. This fight was ended by Edward's death in 1307, and plans for the building were laid. Built by the Archbishop, "one of the most spectacular medieval halls of England" is a modern assessment. Symbolism in visits and in buildings was in the forefront of medieval minds. The King's appearances in deepest Sussex with over 200 staff, to be housed in Mayfield's Palace, were designed to make a point and to teach the Archbishop a lesson which he failed to learn. His defiance is evident in this jewel of a building.

Tim will argue a case explaining the symbolism of the King's visits, his choice of location and his harassment of the Archbishop who lost the Pope's support. Dr Weddell will examine the architecture of the Hall itself and the visible legacy of the Archbishops and later owners of the Old Palace building. This rare event dealing with the art of architecture and giving access to the Hall is on Saturday, 27th April at 7.30pm. Tickets can be purchased from "Sew Inspired" in the High Street or from the website: www.ticketsource.co.uk/mayfieldfestival

The book “Medieval Mayfield: Archbishops and Peasants” by Tim Cornish is available from “Sew Inspired” or via www.mayfieldtimshistory.org.uk

SUSSEX WILDLIFE TRUST

The South Downs

I love heading out at the weekends for a hike over the Downs but 90 million years ago, this part of the planet wouldn't have been a safe place to be. I'd have been busy avoiding the teeth of hungry aquatic predators like the 10-metre-long Mosasaurs as I cruised through a shallow sea. But it would be much smaller, less fearsome prehistoric organisms that would shape Sussex. The calcium shells from microscopic marine algae slumped to the sea floor and millions of years of pressure and erosion moulded them into the curvaceous chalk hills that form the familiar foundations of the South Downs.

It only feels like yesterday (well, about 6,500 years ago) that we humans showed up and got to work. The wild Sussex woods were chopped down and eventually sheep grazing became the dominant activity on the cleared hills for many centuries. The sheep-nibbled short



Credit: Paul Marten

downland turf is an internationally rare habitat, rich in flowers and the creatures that depend on them.



Credit: Nigel Symington

And, as chalk downland is such a rare habitat, the species that live here are also uncommon. Our butterflies are a prime example. Species like the Grayling, Silver-spotted Skipper, Small Blue, Adonis Blue and Chalk Hill Blue are restricted to this special habitat. But it's not just wildlife that benefits. Those porous chalk hills filter, store, and provide us with most of our water. They also offer loads of other free services from flood prevention to pollination and food production. The open countryside around Sussex also offers us immeasurable physical, mental and spiritual benefits. The South Downs were designated a National Park in 2011.

While writing this article, I discovered a letter penned in 1915 by the Lewes naturalist, W. E. Nicholson, expressing concern for the future of the South Downs around Lewes, and especially the rare Adonis Blue butterfly and scarce Forester Moth that live there. I'd like to think that Mr. Nicholson would be re-assured to know that, more than a century later, his beloved Lewes Downs, butterflies and moths are still just where he left them and all flourishing under the care of Sussex Wildlife Trust on their reserves at Malling Down and Southerham.

Michael Blencowe

VILLAGE PEOPLE

MATTHEW HOLLAND'S LONDON MARATHON CHALLENGE

When I told my family I'd got a place to run the London Marathon, my Mum was probably the most surprised given that, as she pointed out, I'd never even expressed interest in walking anywhere, let alone running in the past. It was met with many variations of "why have you done that?" and "that's going to be a lot of effort". I'd played sport, yes, but the hard work and consistency required to complete a marathon is a whole different ball game. It's a personal challenge of course - something to tick off the bucket list, and to prove to myself that I can do it. But a marathon is not just a personal achievement. It's also a chance to raise money for great causes. It was an easy choice for me - why not choose something that I know inside out, and with which my Mum is closely associated. What better way to prove to myself that I can do it.

Mayfield and Five Ashes Community Services (MAYFACS) is a small, local charity in the village where I grew up. Well-known to many



locally, it provides essential services for the elderly and isolated in the village, organising trips out, weekly activities, or just providing a space for a cup of tea or a chat. Throughout the Covid lockdowns they provided key support for those most in need and have become a popular centrepiece of the village. My Mum was the very first Project Manager of MAYFACS, getting it up and running smoothly in 2016 and introducing many of the key services it still offers. Having done all that hard work, she is now enjoying her well-earned retirement by going on all the trips and activities she helped to set up. I'm starting to think the entire thing was a clever ploy so she would have things to do when she retired. Sly move Mum, well done.

Like all charities, MAYFACS relies in part on donations from the generous public. This enables them to carry on providing their vital services to the village, encouraging socialisation for those in need and offering vital help for the most vulnerable in the community. You can read more about its services here: <https://www.mayfacs.org.uk/>. I am therefore asking you to donate to a fantastic cause close to my and my family's heart. Any money that you are willing to give is most welcome, whether it's £1, £10, or more. It will help honour the years of effort that my Mum, and the rest of the staff and volunteers of MAYFACS, have put into making this charity a force for good in our little community. (And also my effort, because running a marathon is hard work y'know!)

CHRIS DALTON - CENTRAL BARK

While walking the footpaths round Mayfield it has become quite clear that there has recently been a burgeoning interest in dog ownership, with many people having made the decision to welcome a dog into their home during lockdown. What better time to open Central Bark, a new 'dog deli' in the centre of the village where our canine friends and their owners will be able to choose from a wide range of foods, snacks, beds and all other dog accoutrements. With the Dirty Paws dog grooming parlour just up the road, Mayfield is fast becoming a one stop shop for all things canine which will hopefully draw clientele from the village and further afield.

The mastermind of this plan is Chris Dalton who has lived in South Street, Mayfield for three years and was until recently a teacher, having been Head of Film and Media at a school in Weybridge for twelve years and more recently at Eastbourne Academy. However, he decided to end that chapter of his life and put his energies into a new and more local enterprise. By the time you read this, Central Bark will be open in the High Street in premises that it will be sharing with the Post Office, already dog friendly with Jo Eates always providing a warm welcome including to those with four legs. The building has traditionally had a doggy vibe and some of you will remember that it was the home of the Mayfield Vet and prior to that Nappers which used to sell dog food as well as all things DIY and Ironmongery. So it could be said that the premises have come full circle.

Chris' interest in healthy foods for dogs was partly generated by his research when his dog Monty developed a number of health issues. It was discovered that the dog's problems were most likely caused by a compromised immune system brought about by his diet. Chris learnt that much mass produced dog food contains low quality protein and grain which most dogs can't digest. Monty improved quickly once starting a more nutritious diet which includes raw, natural and hypoallergenic foods. Three brands will be sold in the shop



including Cotswold Raw, Paleo Ridge and Forthglade and delivery will be available on request. In addition to these foods there will be a highly appealing (maybe not to humans) range of dog treats including rabbit's ears complete with hair, lamb's tracheas and specialist chews which will help keep your dog's teeth clean so reducing halitosis, probably necessary after having eaten the former.

Having been the owner of two labradors myself, both of whom gave me a very painful shoulder by pulling so hard on the lead, I can see the benefits of using a harness when taking a large muscular dog, for a walk. Chris will be stocking two types; Curli and Bally Billows, which can be tried on in the shop to check for fit. A well fitted harness and lead can reduce injuries for the walker and protect the dog's neck from being damaged by a restrictive collar. The shop will also be stocking a range of beds from high end to the more economical, including ranges from Togs and House of Paws and if your dog likes to play, there will be a full range of exciting toys including Kong.

I asked Chris about publicity and marketing and he is getting started soon with a presence on Facebook and Instagram. He's also hoping that word of mouth and convenience will help to get the ball rolling and he looks forward to welcoming all the local pooches into this great new shop. Hopefully, the Twilight Barking will be spreading the word about those rabbit's ears..... Chris Dalton can be contacted by email on centralbarkmayfield@outlook.com

Barbara Murray

UP AND DOWN THE HIGH STREET

MAYFIELD'S MAYFAIR - SATURDAY, 11TH MAY 1PM-4PM - HIGH STREET WILL BE CLOSED FROM 10.30AM - 5PM

The Mayfieldians are at an advanced stage of planning our much looked forward to annual Mayfair after a break due to the Coronation Street Party in 2023. Simon Rudge is working hard with local schools practising the Maypole dancing and the Mayfield Band are on track rehearsing the accompanying music. The event will begin with the traditional May Day Battle being staged by Wateryard to herald spring, when winter's Ice Queen is vanquished by the Green Man. To bring this battle to life, we are thrilled that local professional Fight Director Amy Bolger Floyd will direct and choreograph our battle again this year. Wateryard will be looking for children and young people (aged over 8yrs) to take part. There will be three rehearsals from 4:30-5:30 on Tuesdays - 23rd April, 30th April, 7th May together with a last minute run through on the day of the Mayfair.

If you know someone who may be interested phone Diana on 07985 550 488 or email: bolfor@btinternet.com. The Morris Men have been booked as well as the Mummers. Stalls are being quickly taken up by local and outside organisations but we can accept more if you would like to take one. Just email Mayfieldmayfair@gmail.com.

We are holding a raffle to select the 2024 May Queen. Raffle tickets can be bought from The Hair Salon in the High Street for £1 per ticket. Suggested age range is between 6 and 11, although it is open to any age. We are obviously hoping that the sun will shine! Please put the date in your Diary. It promises to be a very special day.

OUR SCHOOLS

FIVE ASHES PRIMARY SCHOOL



Visit to Lymley Woods

Here at Five Ashes, we have not let the wind and rain stop us. The children have taken part in woodland days at Lymley Woods and enjoyed learning a range of different skills in the outdoor environment.

We have also taken part in two netball tournaments, both in challenging weather conditions and finished joint 3rd in one of these. We also had World Book Day which was truly magical. All children and staff were dressed in a variety of different costumes and school was full of laughter and reading all day.



Darren Gurr Head of School

SKIPPERS HILL MANOR PREPARATORY SCHOOL

The Power Of "I Don't Know"

We no longer feel trepidation when asked a question we can't answer accurately. Saying "I don't know, shall we find out?" is a powerful way to build on existing knowledge and scaffold that knowledge to the next level. We see it as an opportunity for collaborative research.

This is a small sample of the questions that were asked one day last week in Kindergarten:

Why is it raining every day?

Where has my woodlouse gone? It was on this table.....

Where does poo go? (whilst looking down into the toilet)

Is there a volcano in Mayfield?

Where have the dinosaurs gone now?

Can people eat bugs?

Why is mud slippery?

Can persons fly with their arms?

The days are long gone when Early Years teachers would prepare the topics and themes for learning throughout the year, deciding ahead of time what our children would learn about, and how.

Responding 'in the moment' to our children's questions means that we are able to work with each child, responding to real questions in real time. Teachers and children work together, and as answers are found, new questions are posed. This leads to deeper learning and a significant increase in wellbeing and engagement. For the staff, it's an adventure and an insight into the workings of our children's minds and thoughts.

As the children move up into Upper Kindergarten, Miss Emily creates opportunities to develop these individual questions into broader themes, through 'enquiry based learning'.



Our children in Upper Kindergarten have learned about the lives of people in Papua New Guinea, the volcanoes of New Zealand, and the food and hats of America!

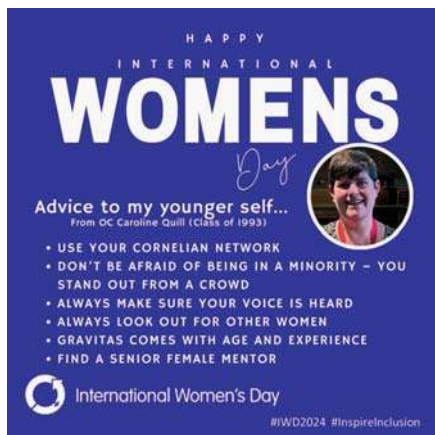
It is wonderful to witness adults and children researching together, creating together, and feeling the joy of achievement together. Every day is truly different and cannot be foreseen or over-planned.

This cannot happen without sensitive and skilled practitioners working together for the benefit of the children. I am so thankful to my brilliant team in the Kindergarten, who work tirelessly to enable every child to feel successful and powerful.

Loraine Pincott

MAYFIELD GIRLS SCHOOL Celebrating International Women's Day

In March, we were thrilled to have Mayfield resident and Old Cornelian, Caroline Quill, join us for International Women's Day. Caroline is Tiger Team Project Director at Thales France. She took us through her incredible career, including balancing family and work life, and the challenges faced by being a woman in the male-dominated field of engineering. She concluded with excellent advice for the young Cornelians in the audience. Thank you Caroline!



Bobby Seagull Visits Mayfield

On Friday, 8th March Mayfield welcomed Maths teacher and reality TV personality Bobby Seagull to school. He gave an entertaining and informative talk to Year 10 students about his life and his mission to encourage more mathematical literacy. He encouraged the girls not to be afraid of making mistakes in Maths, using an example of when he was on 'Celebrity Pointless' and said that three squared was 27 – a mistake that made it to the final edit. Following the talk, the students (and let's be honest, the teachers too) were keen to get photos taken with Bobby, and some had their maths books signed. Bobby visited the library, where he kindly donated and signed copies of his books, 'The Life-Changing Magic of Numbers' and 'The Monkman and Seagull Quiz Book'. Year 12 and 13 maths students had a Q & A session with him, where he gave them encouragement for their upcoming exams and future careers. Bobby's visit coincided with the World Book Day and as Mr Doy's costume included a seagull this was a photo opportunity not to be missed!

Mayfield Festival of Music and the Arts: 26th April – 12th May

We are delighted to be hosting a number of events during the festival at Mayfield School, ranging from a talk on Mayfield's Medieval Great Hall (now the School's Chapel) to the Tunbridge Wells International Music Competition. We are also pleased to share the news that the final concert of the festival, featuring Mayfield School's Schola, will be dedicated



to the memory of Antonia Beary. She would no doubt have been enormously proud of the part that her girls will play in this concert. See mayfieldfestival.co.uk for more details.

Join Us For Our Next Open Morning

Please join us on Friday, 26th April for our next Open Morning, when you will be able to take a tour of the School, hear from our Headmistress and Head Girl and have the opportunity to ask our teachers any questions you have about life at Mayfield. We look forward to seeing you.

Alicia Drummond Talk

Please join us on Wednesday, 24th April for a talk by Alicia Drummond, founder of Teen Tips, on 'worry, stress, and anxiety'. The talk will include lots of tips for helping your children deal with these issues. Please email amorson@mayfieldgirls.org if you would like to attend.

Michaelmas Fair

This year's Michaelmas Fair will be taking place on Saturday, 12th October at Mayfield Girls School. If you, or anyone you know, would like a stall, please get in touch at michaelmasfair@mayfieldgirls.org for further information.

Saul Harris

MAYFIELD PRE-SCHOOL

The children have loved exploring the outside area and as you can see we really do like to go out in all weathers!

Outdoor play enhances physical development, improves lifestyle and wellbeing and outside wet play can also lead to some fantastic investigating, imaginative play. From puddle jumping and mini beast hunts to collecting natural rainfall, it allows the children to learn about nature in a more in-depth way - where it comes from, why it rains, water cycle, clouds and the weather in general.

At Mayfield Pre-School we believe that fostering a love of stories and books is the foundation to a love of reading throughout the Early Years and beyond.

We share stories and books with the

children throughout the day, either 1-1 or as a group. We are also very lucky to have Joanna, our volunteer, in each week to read to the children; they really look forward to her visits. The children got very creative for World Book Day which also led to some fantastic role play, bug hunts, planting, and construction.



We would like to wish everyone a wonderful Easter break and to thank the local community for their continued support.

Charlie Cranch – Pre-School Manager

MAYFIELD PRIMARY SCHOOL

On Thursday, 7th March, Mayfield CE Primary School looked a little different. Visitors to the school found even more joy than usual, were amazed by the creativity they saw and enjoyed being part of the community event that was World Book Day. The children and staff had such a great day teaching and learning alongside famous and infamous literary heroes such as Harry Potter, Gandalf, Ursula, the Cheshire Cat and so many more – that really doesn't happen every day!

The day was all about books – talking about them, living them and of course reading them! Everyone involved will remember this special day in which the school community joined together and with others around the country and the globe to celebrate books, authors and illustrators. The world of imagination was certainly enlarged and will have lasting effects as so many of the children speak positively about themselves as readers and love talking about the books they have read and the worlds that have opened up to them as a result of their reading. Long may it continue!

If you would be interested in sharing in our reading journey and would like to support our children as they grow as readers, please do contact the school office, we would love to hear from you!



Kingfishers' class had a trip to Ashdown Forest, where we spent the day learning about how Stone Age people would have survived in our local area. We started the day by looking at a variety of artefacts and finding out their purpose and how they were used. Then we went out into rain where we spent some time pretending to be Stone Age people hunting and gathering.

After lunch the children spent a long time creating shelters. The children had a wonderful time, even though they were returned to their parents soggy and caked in mud.

Katie Hawkrigde



Learning about the Stone Age



Building a shelter in Ashdown Forest

OUR CHURCHES



COLKINS MILL

I hope you had a good Easter, and that there may be some chocolate left to last a few days! "We are an Easter people, and 'alleluia' is our song," said St. Augustine. On Good Friday we remembered a Saviour who joined us in this troubled world of sadness, injustice and pain. He didn't stand at a distance but willingly suffered for us. And on Easter Sunday, the risen Christ dispelled darkness with light, defeated death with life. As Easter people that powerful truth brings real hope to our lives, and confidence in God who can do so much more than we would ever think possible.

We like having visitors. Every Sunday we have breakfast together from 10am, with our service starting at 10:30. You would be very welcome.

Steve Harland

email contact@colkinsmillchurch.org.uk

ST. DUNSTAN'S

Food and Craft Market: Saturday, 8th June 11am - 3pm

St. Dunstan's is doing something different this year for our Summer Fundraiser! We have 'rebranded' our Summer Fete and we are going to run a Food and Craft Market and hope that you will come along and support us.

We will still have our traditional Raffle, BBQ, Pimm's Stall, Cake Stall and Cream Teas but we are also inviting local craftspeople and food stallholders to join us and sell their wares. There will also be lots of children's games (which adults can enjoy too!) so everyone should be kept entertained.

Please put the date in your diary and look out for more details to follow.

If you'd like to book a stall or volunteer to help run the event, then please call Nicky in the Parish Office on 873484 or email: office.stdunstans@gmail.com

ST. THOMAS OF CANTERBURY CHRIST IS RISEN, ALLELUIA

This month's Newsletter will be with you when Christians are celebrating Easter Week. We proclaim with praise and joy that after three days in the tomb, God raised Jesus from the dead. So great is this rejoicing at this time when we remember our salvation that the eight days from Sunday to Sunday are one long day of celebration and reflection on the resurrection. The resurrection of Jesus is the key to the New Testament. "If Christ be not risen then our faith is in vain", as St. Paul says.

Yet for centuries this was obscured by a great emphasis on the suffering Christ on the cross. Good Friday became more central than Easter Sunday. Today we have recovered that key importance of the resurrection so that the three days from Maundy Thursday evening through to Easter Sunday evening form for us one celebration in three parts of the Last Supper, Passion and Crucifixion and then the Resurrection. The three days go from evening to evening which means everything happens on the first day. Jesus is dead for the whole day from Friday evening to Saturday evening so that the Easter celebration is on the third day. On Saturday night the Easter Vigil is celebrated as the high point of the Church's year.

This year, instead of the walk of witness on Good Friday, our three Churches celebrated a Passion Play on Palm Sunday. A Passion Play follows the great Mystery Plays of the Middle Ages and like them seeks to be a witness to our faith, a reflection on it and a way of teaching the faith. Many of the cast of the play were committed Christians from our Churches giving witness to our common faith.

Yet, calling this a Passion Play in the traditional way is too limited because we have become so aware of the central place of the Resurrection. The play moved from Good Friday to the day in the tomb and then to Easter and the Resurrection. We had the telling of his suffering and death leading to a climax with the rising from the dead of the Lord Jesus.

The play therefore prepared us to follow the events of last week, Holy Week, so that we are now celebrating Easter Day. Jesus died for us to rise from the dead and so enter his glory for which we remember and we rejoice. At Easter many Christians renew their baptismal commitment, knowing with St. Paul that we must share his sufferings in order to share his glory. We witness to and proclaim the risen Christ because we believe in the resurrection of the dead on that day when he returns in glory. In the meantime, Christians share all the sufferings of our world in its many forms because we have the hope and joy of Christ Jesus risen from the dead.

Therefore, we proclaim: Christ is risen, Alleluia.

Fr. Patrick, St. Thomas's Church, Mayfield

The parishioners of St Thomas' wish everyone a very Happy Easter.

Masses at St Thomas' during April

6.00pm Saturday 6th April

10.00am Sunday 14th April

6.00pm Saturday 20th April

10.00am Sunday 28th April

You are welcome to join us and please stay for coffee after the Sunday Masses.

For further information please see the parish website

www.stthomasmayfield.org.uk

Mary Brentnall

ROUND AND ABOUT THE VILLAGES

MAYFIELD FIRE STATION & FRIENDS OF MAYFIELD PRIMARY SCHOOL CHARITY CAR WASH

Saturday 4th May 10am - 3pm Mayfield Fire Station

Come and get your car cleaned and enjoy some delicious refreshments while you wait!
All donations shared between The Firefighters Charity and Mayfield Primary School.

NATIONAL GARDENS SCHEME (NGS)

Mayfield Gardens Open For Charity

The Oast in Fletching Street, owned by Mike and Tessa Crowe, will be open on Saturday, April 27th and Sunday, April 28th from 11am to 5pm. This garden is one of the few in our region to offer a superb display of tulips and other spring flowering plants and consequently attracts visitors from far and wide. We are lucky to have it in our village, definitely one not to be missed. Admission £5, free for children. Dogs can come too (on

short leads). Delicious homemade teas will be provided by the Mayfield Primary School team and there will be plants on sale from Rapkyns Nursery and from a home-grown selection. You can buy tickets on the gate, cash or card, or book in advance online at ngs.org.uk

Another lovely garden which is open in April is Penns in the Rocks, not too far away, near Groombridge. Sunday, April 14th, from 2 to 6pm. This is a large garden with a spectacular outcrop of rocks and vast displays of daffodils and bluebells as well as a more formal area and walled garden with herbaceous planting.

Later in the summer, **Hoopers Farm** will be open on June 8th and 9th with a display of roses and other early-summer flowering plants. The **Mayfield Open Gardens trail** will be held a little later than in previous years: Saturday, 13th and Sunday, 14th July.

The Sussex visitor booklets, the guide to all the NGS Open Gardens in the county, are available in the village and at local nurseries and garden centres. For all the

information on open gardens throughout the country and the charitable work that is carried out by the NGS, please visit the website ngs.org.uk.

Sarah Ratcliffe



BENCH FOR LIZZIE CLARK

Many thanks to all the kind people who generously contributed to the Memorial Bench for Liz Clark. We are delighted to announce that we have almost reached our target to buy the bench and have it installed on Court Meadow, hopefully in time for this summer. Thank you to Jo at the Post Office and Nicola at Sew Inspired who kindly took in donations.

If donating was on your "to do" list, but you never quite got round to it there is still time. Just pop your donation into an envelope, label it "donation for Liz Clark" and hand it in at the Post Office

Thank you.

Brenda Scragg & Shirley Holland

MAYFIELD LOCAL HISTORY SOCIETY

<http://www.mayfieldlhs.org.uk>

A fascinating talk was given in March by Richard Nabavi on the history of Mayfield's railway. Richard lives close to the old railway line and has researched its development in the 19th Century and eventual closure by Beeching in 1963. The Cuckoo Line was the old steam railway which ran from Polegate to Tunbridge Wells. The track was started in 1849 with the single-track link from Polegate to Hailsham. In September 1880 a further length of single track from Eridge to Hailsham was opened, providing a service from Charing Cross to Eastbourne via Tunbridge Wells. The track ran from Polegate to Tunbridge Wells via Hailsham, Hellingly, Waldron, Horam Road, Heathfield through a tunnel to Mayfield, Rotherfield then on to Eridge, where it joined the Uckfield to Tunbridge Wells line. Its name came from the Cuckoo Fair held at Heathfield. Legend has it that a quaintly dressed old lady always turns up at the

annual April Heffle (Heathfield) Cuckoo Fair, to release from her basket the first cuckoo of spring. Drivers of the trains referred to the trip as "going down the Cuckoo".

Our next meeting will be on Friday, 19th April on "Three Castles and an Ironmaster's House" by David Clarke.

This talk is an engaging account of a walk between four National Trust properties; Bodiam Castle, Sissinghurst Castle, Scotney Castle and Bateman's, that explores the history and the industrial past of the High Weald Area of Outstanding Natural Beauty, in this part of Kent and East Sussex. Three Castles is an opportunity to take the time to explore the castles and houses and towns and villages along the route. It follows man's ingenuity and progress and a changing industry from agriculture to iron, to sheep, to the woollen trade, smuggling, hop fields and back to agriculture.

The ironmasters and the rich woollen trade are survived by their architecture at Sissinghurst, Cranbrook and Burwash and Brightling. The derelict hop-pickers cottages, next to the River Teise in Lamberhurst, provide a startling contrast to the rich and landed.

Such a varied landscape brings together tales to tell of Mad Jack Fuller and Bloody Baker, Admiral "Foul weather Jack" Norris, and Captain Swing. There are tales of smugglers and Mechanical riots, Napoleon's horse, aliens in Robertsbridge and, of course, that 'vengeful dragon' in Angley Wood.

Summer Outing - Please advise committee members of where you would like to go.

**Brian O'Connor, MLHS Chairman 873477
Gill Marengi, MLHS Secretary John Buddle, MLHS Treasurer 872229**

MAYFIELD BONFIRE SOCIETY

Carnival on 24th September is less than six months away and we are busy raising the £10,000 we need to run the event for our village. Last July we introduced a new '59 Club', based on the National Lottery bonus ball, as a fun way to help support us and raise money. The concept of the 59 Club is that Members, Friends and Patrons of the Society "buy" a particular number(s) between 1 and 59, corresponding to the numbers on the weekly Saturday National Lottery draw. Each Saturday the National Lottery draws a Bonus Ball – and if this is the same number as your own, you win! It's as simple as that.

So far, nearly half of all members of the 59 Club have won a prize, three people have already won twice, and one lucky person won the rollover of £64! A very nice bonus ball for them, whilst helping us raise hundreds of pounds towards the Carnival. There are still 38 numbers available, so plenty of chances to win, and the more members there are of the 59 Club, the higher the weekly prize pot. You can also own more than one number to increase your chance of winning.

If you would like to join the 59 Club you can find out more information on our website

www.mayfieldbonfire.co.uk/59club

or contact 59club@mayfieldbonfire.co.uk

We also have a couple of new fundraising events coming up in the spring, so hold the dates in your diary. On Sunday, 2nd June we will have an exclusive Open Gardens in The Warren and East Street, where a group of our generous supporters are opening their private gardens for an afternoon for you to explore and enjoy afternoon teas and cakes. On Saturday, 22nd June we are showing a karaoke version of the cult classic, The Rocky

Horror Picture Show, at Five Ashes Village Hall. The perfect excuse to dress up and sing-along. Tickets for both events will be available in May.

Catherine Hawley

Bonfire@gawain.online

WOODHILL SURGERY

From 1st April, we will see some permanent changes to our GP schedule:

Monday: Dr Richard Baxter & Dr Anna Cannon

Tuesday: Dr Catriona Maciver & Dr Anna Cannon - (AM only)

Wednesday: Dr Justin Baseley & Dr Stephen Fletcher - (AM only)

Thursday: Dr Catriona Maciver & Dr Stephen Fletcher - (AM only)

Friday: Dr Stephen Fletcher & Dr Steven Miller

Andrew Cornell – Managing Partner – Ashdown Medical Group (Woodhill Surgery)

MAYFIELD COMMUNITY & HEALTH CENTRE

A Pre-Construction Services Agreement was signed by the build contractor in March. Consequently, the contractor will be mobilising the design team including formally appointing the various professional consultants, and in particular the architects, which means that the real design work now begins. Design team meetings are to be held every two weeks and will commence shortly. The main design drawings are expected to be available in the next couple of months or so and will be shared with everyone when available.

A Development Agreement, which defines the legal arrangements between the parties, is being studied by the Parish

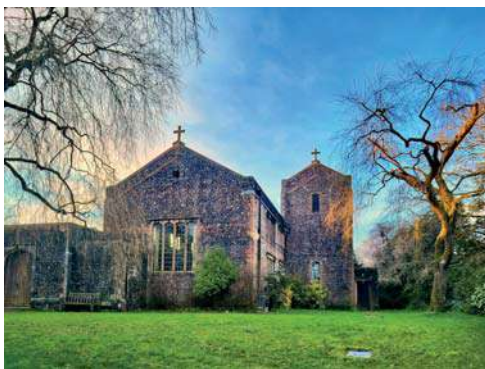
Council's lawyers, as is an Agreement to Lease document, both of which are key legal elements of the project. Other contractual documentation is also being drafted.

An Employers Agent & Quantity Surveyor are being contracted. These experts will be the day-to-day interface between the contractor and the purchasers and will advise on numerous things such as the validity of invoices etc.

Additional funding opportunities continue to be pursued.

Further information can be found on the village Facebook site and the Mayfield and Five Ashes Parish Council website www.mayfieldfiveashes.org.uk, as it becomes available.

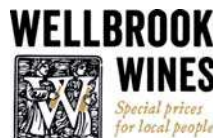
THE MAYFIELDIANS' PHOTO OF THE MONTH COMPETITION



This winning photograph for February was taken by Gill Lawday. Congratulations Gill. We are now inviting entries for March and April. All entries should be in as high a resolution as possible, ideally 1mb file size minimum. All photographs must be of an identifiable location in the Parish and sent to mayfieldians@gmail.com.

Wellbrook Wines have very kindly agreed to donate a bottle of wine each month to

the winner of the competition. Ian says "We import most of our wines directly and are thus able to offer amazing value for money. If you're a local wine lover who is fed up dealing with the big guys and you want a friendly, helpful, expert service from a local company, give us a



try." www.wellbrookwines.co.uk

ARGOS HILL WINDMILL

Open on the following dates from 2.00 to 5.00pm:

1st April - Bank Holiday Easter Monday

21st April - Sunday

11th May Saturday National Mills Weekend

12th May - Sunday National Mills Weekend

9th June - Sunday

14th July - Sunday

Entrance is free but donations are invited. In addition, guided tours, tea/coffee and cakes will be offered.

Geoff Doughtrey, Chairman Argos Hill Windmill Trust

MAYFIELD EVENING W.I.

Our March meeting was a craft evening. Ruth Mills, one of our members, provided us with a wide range of materials and skilfully demonstrated how to create some Easter decorations. We then had a go at



making our own. It was great fun and led to some lively conversation and some colourful and sparkly decorated ceramic eggs.

Our April meeting on Tuesday, 9th April will feature a talk entitled 'The Art of the Goldsmith' given by jewellery designer Anton Pruden of Sussex jewellers, Pruden and Smith.

We meet every second Tuesday in the month (apart from August) at 7.15pm for 7.30pm at Colkins Mill Church, just at the end of the High Street.

Please feel free to pop in at one of our evenings and meet us all.

For any further information, please contact Chrissie Robinson on 862825

MAYFIELD AND DISTRICT U3A

The Pantiles, a talk by Frances Farrer-Brown - 2.00pm April 18th, Five Ashes Village Hall

Varied as our monthly talks are, coincidentally those of both March and April were, or will be, about places or rather the hidden delights within places we think we know.

Jo Livingston was indeed successful in tempting us to get on a train to London, but Frances Farrer-Brown will be leading us towards Tunbridge Wells, a mere bus ride away.

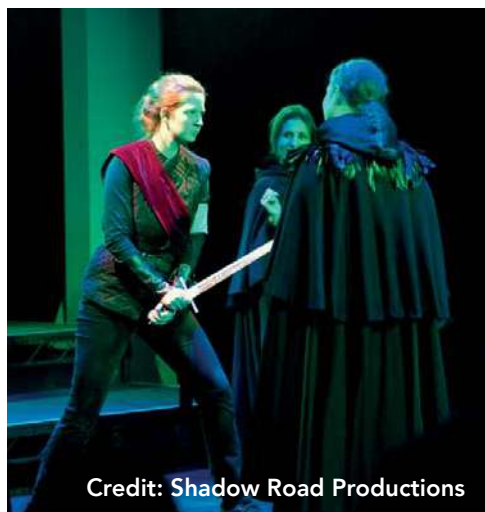
The Pantiles is a well-known tourist hotspot of shops and buildings that is always a pleasure to wander through, but I suspect we will be shown another aspect of the area altogether.

Frances Farrer-Brown has been a Blue Badge qualified guide since 1999, and due to her meticulous research has a wonderful grasp of historical and cultural insights. She is full of humour and enthusiasm, and we can expect to be not only entertained, but to learn a lot.

As ever, our talks are free to our members, but all are welcome, for a small fee of £2.00, which includes refreshments. For more information please email our chairman marybrentnallu3a@gmail.com, or visit our branch website, which is www.u3asites.org/mayfield. See you there.

MACBETH: SLEEP NO MORE

Many people will know Amy Bolger (stage name, Amy Floyd) as the fight director who has been training members of the village for the community film *Matter of Britain*. She grew up in Mayfield, attending both the Mayfield Primary and Mayfield Girls School, and acted in various Phoenix and Wateryard productions. She has since gone on to pursue a successful career as an actor and fight performer and is currently starring as Macbeth in *Macbeth: Sleep No More* by Shadow Road Productions. A theatre company renowned for performing outstanding work in unique spaces, this latest adaptation of theirs is no exception, with rave reviews from critics and audiences at 2023 Edinburgh Fringe,



some reviewers even "*making tracks for a repeat run. Yes, it was that good*" - an unheard-of event at the Edinburgh Fringe. How exciting then that this production will open the Mayfield Festival on **Friday 26 April at 7.30pm** in St. Dunstan's Church. An electrifying new adaptation of Shakespeare's infamous tragedy and widely-studied classic that retells the old story of the 11th century Scottish king and examines the physical and psychological damage done by political ambition – both to those who seek power for its own sake, and to those who get in their way. **Reviews, photos & book tickets at:** www.shadowroad.com/macbeth

MAYFIELD HORTICULTURAL SOCIETY

It was good to see so many members at our AGM last month and to kick off our gardening year with Simon Sutcliffe's stimulating talk on Growing for the Chelsea Flower Show. How does he cope with all that stress every year?

Tuesday, 16th April - 7.30 for 8.00 pm, we welcome Mike Abel to talk to us on pest and disease control in the garden. With insect numbers becoming perilously

chemical pesticides. As well as the use of insect predators and parasites, physical methods such as insect-proof nets can be very effective. Pheromone traps and non-chemical sprays will also be discussed.

Before recently retiring, Mike worked for a company called Agralan, who market beneficial insects to commercial growers and amateur gardeners, as well as bumble bees for the pollination of glasshouse and poly-tunnel fruit and tomato crops. Prior to that he was a lecturer at the renowned Writtle Agricultural College in Essex, teaching commercial fruit and vegetable crop production.

He will be bringing some items for sale that are included in the talk, including honey from his own hives. As this is a subject that provokes the most questions from other gardeners, we are expecting a full house! See you there.

Not a member? No problem! Just pay £5 at the door, or join on the night for £7.50 annual membership, for free talks throughout the year and discounts on horticultural items at local outlets.

Dates for your diary

Saturday, 11th May, Plant Sale 9am-11am, Memorial Hall Car Park

Wednesday, 12th June, annual outing to Clinton Lodge Gardens in Fletching, £14 plus small cost for travel

Saturday, 20th July from 2.30pm, Mayfield Summer Show, Mayfield Scout and Guide Hall

Tessa Crowe

chair@mayfieldhorticulturalsociety.org.uk
www.mayfieldhorticulturalsociety.org.uk



low, it is important that we all try to garden organically as much as possible, and the talk looks at ways of controlling pests in the garden and greenhouse by natural methods, without the use of harmful

It is with great sadness that we report that two of our members, Mrs Berenice Blurton and Mrs Hazel MacArthur have passed away. Both Berenice and Hazel were long-standing, valued members of this Branch with Berenice also being a lifelong active member of the Women's Institute in Mayfield and wider afield. Our sincere condolences and support go to their families and friends at this time.

Next Branch Meeting Wednesday, 5th June 6.30pm for 7pm at Mayfield Cricket Club – our speaker's details to be announced in the May Newsletter.

Summer Garden Party – Sunday, 7th July Branch Meeting - Wednesday 23 October, incorporating the Annual General Meeting

Famous and the Not So Famous War Poets – My first entry this year is about Geoffrey Studdert Kennedy MC (27 June 1883 - March 1929), an English Anglican priest and poet.

On the outbreak of World War I he volunteered as chaplain to the army on the Western Front where he gained the nickname "Woodbine Willie" for giving Woodbine cigarettes to the soldiers he met, as well as spiritual aid to injured and dying soldiers. In 1917 he was awarded the Military Cross for conspicuous gallantry and devotion to duty showing the greatest courage and disregard of his own safety after running into no man's land (at Messines Ridge) to help the wounded under heavy fire. He wrote a number of poems about his experiences, and these appeared in the books *Rough Rhymes of a*

Padre (1918) and *More Rough Rhymes of a Padre* (1919).

For all the clumsiness of their rhyme and their deliberately slangy vocabulary they moved almost seamlessly from depictions of the mundane, almost comical frustrations of life on the front to the reality of its misery. Here are two of them:

First

When there ain't no gal to kiss you,
And the postman seems to miss you,
And the fags have skipped an issue,
Carry on.

When ye've got an empty belly,
And the bulley's rotten smelly,
And you're shivering like a jelly,
Carry on.

When the Boche has done your chum in,
And the sergeant's done the rum in,
And there ain't no rations comin',
Carry on.

When the world is red and reeking,
And the shrapnel shells are shrieking,
And your blood is slowly leaking,
Carry on.

Second

For 'ow did'e count for my brussels sprouts
If 'e didn't believe i' God.

But it ain't the same out 'ere, ye know.
It's as different as chalk fro' cheese,
For 'arf on it's blood and t'other 'arf's mud,
And I'm damned if I really sees
'Ow the God, who 'as made such a cruel world,

Can 'ave Love in 'Is 'eart for men'
And be deaf to the cries of the men as dies

And never comes 'ome again.
Just look at that little boy corporal there,
Such a fine upstanding lad,
Wi' a will ov 'is own and a way of 'is own,

And a smile ov 'is own, 'e 'ad.
 An hour ago he were bustin' wi' life,
 Wi' 'is actin' and foolin' and fun;
 'E were simply the life on us all, 'e were.
 Now look what the blighters 'a done.
 Look at 'im lyin' there all over a 'eap',
 Wi' the blood soaken over 'is 'ead,
 Like a beautiful picture spoiled by a fool,
 A bundle o' nothin'—dead.
 And it aint only 'im—there's a mother at 'ome',
 And 'e were the pride of 'er life.

Kevin Swaine 872197 / 07970 787465 kevinswaine@btinternet.com

MAYFIELD FESTIVAL OF MUSIC AND ARTS

Don't forget that the Mayfield Festival starts on Friday, 26th April. The opening event is an electrifying adaptation of Shakespeare's **Macbeth** in St. Dunstan's Church that features an all-female cast (including Mayfield's own Amy Floyd) and which played to rave reviews at last year's Edinburgh Fringe.

The hot tickets for this **Phonic** on Wednesday, sold out at time of writing the time that you read this)

Community Gospel Choir on

been a steady demand for this latter event since the box office opened and at time of writing - 6 weeks before the festival opens - well over half the tickets have been sold. So, if you want to see the London Community Gospel Choir perform in St. Dunstan's Church don't delay your purchase: get in while tickets are still available.



year's festival are **Gin and** 8th May (which is almost and probably will be by and **The London** Saturday, 4th May. There has

Other events of note are the performance of Robert Schumann's masterful song-cycle **Dichterliebe** by mezzo-soprano **Helen Charlston** and **Sholto Kynoch**, **Liz Grand**'s one-woman play about the life of **Enid Blyton**, a recital by the world-renowned pianist **Imogen Cooper**, jazz from the **Felix Fardell Quintet**, a night of songs by **Cole Porter** and, on the closing night, the joint delights of the **Mayfield Festival Choir** performing **Puccini's Messa di Gloria** and a performance of **Elgar's Cello Concerto** that features as the soloist the winner of the 2022 Tunbridge Wells International Music Competition, **Edvard Pogossian**.

Full details of all events are available on the Mayfield Festival website at www.mayfieldfestival.co.uk and tickets can be purchased either online at www.ticketsource.co.uk/mayfieldfestival, by telephone on **0333 666 3366** (quoting Mayfield Festival) or in person at **Sew Inspired**, High Street, Mayfield. A special offer discount applies that if you buy tickets for 5 separate events or more in a single purchase

MAYFIELD BAND

Should you happen to be walking the dog past Band HQ on Court Meadow on a Friday night, you are likely to hear Taylor Swift as you set off, and Ralph Vaughan Williams as you load your muddy mutt back into the car. Yes, you are not mistaken, that's us, such is the range of music that we are playing at the moment. We have something for everyone, so never be put off from joining us or coming to one of our concerts because you think you won't like what we play. Our aim is simply to perform enjoyable music for our audiences, and for our players. But with the Mayfair nearly upon us, we are now also focusing on more traditional music for the maypole dancing. It's always an enjoyable day, but very hard work. Speaking of Vaughan Williams, we are hoping to use a snippet of one of his works to accompany the maypole dancing at the Mayfair, which if we can pull off will be a first, and something you are unlikely to hear or see anywhere else in the country. The old fella hasn't made it easy though. Despite being the Godfather of folk, it really wasn't helpful to use 13 bar phrases when we are working with 16 dancers. What were you thinking about Ralphie? Great composer, terrible mathematician.

Mayfield Youth Band

We are hoping to start a new beginners' group next term, and whilst we are always happy to welcome new players at any time, it's always nice when we get a group working together, so now would be a great time to give it a go. If you missed our recent drop ins, just give me a call. Don't forget that we will provide the instruments. The sessions will be on Friday afternoons, time to be confirmed.

The older players have been having a go at conducting the band. I always find that teaching something you thought you knew

about soon makes you realise how much you don't know, so it's a great way of developing young players. And of course standing in front of a group of people and talking to them is a really important life skill. Band life is about so much more than just music. Personal development, commitment, and mutual support and respect are all part of what you can expect when you join the brass family, and you will find opportunities for your children here that you may not find in other musical groups.

Simon Rudge 872007/07919 810765
simon@mayfieldband.co.uk

MAYFIELD TENNIS CLUB - OPEN DAY SATURDAY, 25TH MAY

Mayfield Tennis Club (in Station Road next to St. Thomas of Canterbury Church) will be welcoming visitors on Saturday, 25th May. The Open Day has been arranged in conjunction with the Lawn Tennis Association's "Big Tennis Weekend" incentive to get local tennis clubs to allow people of all standards and ages to play tennis for free in order to encourage them to take up or to return to the game of tennis. On this Open Day our LTA qualified coach will organise play and introduce newcomers to the game. Although both adults and juniors are welcome at any time between 11 am and 2 pm, the day is being specially arranged for juniors between 11am and 12.30pm and for adults between 12.30 pm and 2 pm. Tennis balls and rackets will be provided as well as refreshments. We ask that people wear soft shoes in order to protect the court surfaces. Anyone joining the Club at the Open Day will have their one-off entrance fee waived and will also be offered a free group coaching lesson for one hour with our coach at the Club at a later date.

MAYFIELD GOLFING SOCIETY

East Brighton Golf course was the venue for our March meeting, the main event being a pairs trophy competition.

The serial bandit (Rob Montagu a.k.a. Dick Turpin) who won the previous 2 events was missing this time. His horse, Black Bess, was apparently lame.

This filled the 24 members who did play with hope that they were not making another fruitless outing and the noon start time in bright, even sunny weather was also welcome. However, dreams of a decent competition for the title were soon dashed, at least for some.

On discovering what the draw had given them as their pairs partner, a number of people were grumbling before we even teed off. I don't know why being landed with our Captain, Chris Buck as a partner was seen as such a disadvantage by Will Lunn but that is what happens with a (supposedly) random draw.

The first 12 holes were enjoyable, but then the field caught up with another society who had teed off an hour before us. Play ground to a halt several times, with 2 or 3 groups on the same tee waiting to play. With lowering clouds presaging evening rain, the gathering gloom and ever-colder wind made for an unpleasant finish. Thoughts of a nice 4 hour round slipped to an unpleasant 5 hour plus round and this was too much for one group who wanted to be finished before their bedtime and walked in from the 15th.

Towards the back of the field, there was one player lighting up the course who wouldn't have come in early if a hurricane hit us. This was the Andrew Burnett Show featuring an eagle, birdies and a terrific partnership with his pairs partner Pete Smith. Andrew's 47 points off 14 handicap was a truly wonderful thing. Unsurprisingly, Andrew and Pete won the pairs trophies

easily. Andrew also had the best individual score, and won the Nearest the Pin prize. Sounds of carousing could be heard from the Burnett household all evening presumably fed by the multiple bottles of wine prizes. I hope this makes joining the single handicap club all the sweeter.

Our next meeting is on Friday, 19th April at the Seaford (Blatchington) Golf Club. See mayfieldgolfingsociety.com for details.

NEWS FROM NUS GHANI – MP FOR WEALDEN

I receive a lot of correspondence on planning in Wealden and many residents have been in touch with me to share their concerns over the new housing numbers proposed for our area by the current Council leadership.

As you may be aware, the Wealden District Council's Draft Local Plan is now out for public consultation. It outlines where the new Wealden District leadership, a coalition of Liberal Democrats and Green Councillors, intends to build 15,729 new homes between now and 2040. The Draft Local Plan consultation period will run from Friday, 15th March to Friday 10th May and I would like to encourage all Wealden residents to consider taking part and have their say. The consultation is available online at <https://consult.wealden.gov.uk/kse> and will also be accompanied by a series of drop-in sessions across the district. Details of these can be found on the Council's website.

I fully acknowledge that we do need more homes, and a level of development in Wealden is inevitable. I see the need for affordable homes pop up daily in my casework and I believe that we should be striving for sensible, affordable housing for first-time local buyers and renters, and those who wish to downsize locally.

However, I do recognise the level of surprise and frustration at the numbers proposed in the Draft Local Plan, which are much higher compared to what the councillors had been proposing to residents last year.

I'm always keen to hear resident's views on local matters but please remember that social media posts and emails to your MP regarding planning do not count as objections in a formal Council consultation and that I have no jurisdiction over individual planning applications or what is approved or dismissed on local planning by Councillors. The Draft Local Plan is an initiative overseen, managed, and implemented by the new Wealden District Council Leadership and the most appropriate way of shaping the final version of the Local Plan is via the official consultation.

I continue to work hard to ensure that your concerns are heard in Westminster. If you are a Wealden resident and require my assistance, please email nusrat.ghani.mp@parliament.uk.

YELLOW PAGES GOING GREEN



MAYFIELD CLIMATE ACTION - COMMUNITY FORUM GROWS

Mayfield Climate Action held a very successful meeting of its Community Forum on 13th March, kindly hosted by Wadhurst Park. Luis Brown, CEO of Wadhurst Park, gave a fascinating talk on the unlikely subject of carbon auditing, showing how major reductions in emissions have been achieved on the back of rigorous measurement. The talk also emphasised the major impact of livestock on carbon equivalent (methane) emissions and the associated benefit of reducing meat consumption. Equally the land, through trees and soil, is a vital carbon sink.

Chantal Lass, Head of the Climate Change Team, then gave a brief introduction to Wealden District Council's

prospective Climate Change Strategy reflecting the high priority attached to environmental concerns following last year's elections. In particular, Chantal is keen to engage with as many people as possible in taking the project forward, highlighting the importance of the interactive hub at www.letstalk.wealden.gov.uk

Meanwhile, Mayfield Climate Action looks forward to a busy year with another Climate Change Competition due to get underway on Earth Day, 22nd April, this time with the participation of Beacon, Heathfield, Mayfield and Uplands schools. We are also working on opening some green energy homes alongside the NGS Open Gardens in mid-July, giving everyone the chance to learn about people's experience with, for example, solar panels and batteries, good and maybe not so good!

Finally, it is clear that the subject which commands most immediate attention and support across Mayfield is our intention to become an International Dark Sky Community. If you saw dodgy looking

people with clipboards out on the only two clear nights of February and March, they were taking light meter readings necessary to our application. The Parish Council has also agreed to consider adopting a resolution to provide vital support as we work with neighbouring parishes to turn off the lights and turn on the night across Wealden.

HEALTHY HEDGES: NIGHTINGALE ROUND EVERY CORNER



Life in healthy countryside hedges froths and flourishes with lengthening days. Every creature that uses them for food and shelter notices. Whilst laws and regulations governing farmland hedges are fluttering on the spring breeze, awaiting updates and redrafts, farmers have long been protecting birdlife by not cutting from the beginning of April until August ends. We should all abide by this for the risk we may destroy active nests, disturb nest building or harm protected species such as dormice or great crested newts - all these are criminal offences at any time of year. Hopeful planting schemes are steadily replacing those countless miles of hedgerow grubbed out after the Second World War but we need to look after our existing stock and learn again how to care for them. It is worth looking closely into the matrix of stems before the mass springtime re-greening to see the true



state of health. If the hedge has been cut at the same height every year, there will likely be little flower as most stems of woody plants will not bloom and berry on year-old growth. The now commonplace flat-top cutting of hedges gives little light to the base, lessens resistance to the weather and the base becomes increasingly sparse and vulnerable to disease. An “A” profiled hedge is a healthier hedge. Tractor-mounted flails get a bad press, especially when used to cut stems that are too thick, leaving tattered stems exposed. If cut to the same gristly knuckle each year, the plants are confined, and slowly the whole hedge weakens. Any new growth on a hedge feels heartening after the brown stems of winter, so it can be hard to notice this slow decay over timescales marked by change of landowner and cutting contractor.

In the past we knew how to prompt new vigour and extend lifetimes so that our oldest hedgerows could live to be hundreds of years old at least. Ancient people probably preferred living hedges as alternatives to fences as they called for less expense and lasted for an indefinite time. With easy muscle of tractors, flail cutter aloft, our traditional management with hand tool was easily booted out...it made sense. It became easy to cut each year and keep hedges tidy and under tight control without realising the harm. Perhaps this is another case of history repeating itself as we look back into our old toolkit of knowledge and the implements of the past

(billhooks, axes, slashers and podgers) and re-discover their worth. There is a management approach that can work alongside our newer equipment to make hedges fit for this century to provide stock proof field boundaries (when fence posts fail as soon as your back is turned), give shelter to livestock, encourage beneficial pollinators and predators, slow runoff, minimise erosion and benefit a huge number of species. A thriving hedge will hold on to more carbon too. For hedge health and wildlife value do not cut every year, rather on rotation every 3 or 4 years, allowing hawthorn and blackthorn to flower on some sections, whilst others are cut. Each time a section takes its turn the cut is taken incrementally higher, slowly



returning to the cycle of incrementally higher cuts every 3 or more years until it is left to grow to a suitable laying height. The duration of this cycle can be 20 - 40 years. Current generous grants can cover farmer costs of hedge laying. This may change but independent of grants, perhaps the costs of this good management makes financial sense, with the bolt-on of ALL the benefits of healthy hedgerows.

Do opt for a native hedge at home rather than those of Laurel and Leylandii that offer scant wildlife value and give no character to the seasons. A twiggy mixed native hedge can screen well. We are tucked up inside for much of their dormant months anyway. Exuberant long growth and flush of native flower is a choice habitat of nightingale, turtle dove, warblers and cuckoo. The winter homes of these birds are threatened and their migration perilous, but with a healthier hedge providing food, territory to advertise their prowess and safety for their nests we can do much to help their populations and then delight in their calls. A huge resource of information <https://hedgeline.org.uk/> South of England Hedgelaying Society if you are interested in learning this ancient craft or understand more on how it increases the longevity and health of hedges to meet multiple ends.

<http://sehls.weebly.com/>

Sarah Litchfield



allowing the hedge to increase in width and height.

At a height of around 12-14ft the hedge could be laid. This is when partially cut stems are taken low to the ground at an angle of 30-45 degrees (known as 'pleachers' by the hedge layers), leaving the life-giving "hinge". Staking and attractive horizontal binding follow to give tidy sculptural form and strength to the reformed hedge.

With light on these angled stems there is a rejuvenating effect. Vigorous new growth is trimmed yearly (by hand or flail) in the first 4-5 years to encourage density, before

NEWS FROM FIVE ASHES

HORTICULTURAL SOCIETY

Writing this in mid-March we're in a bit of a limbo between all the preparations: Schedule approved, printed and delivered; Spring Show preparations sorted; and the Show itself.

At the moment the weather is not very spring-like – very wet, but plants are well advanced – not too advanced we hope.

Time will tell!

Graham Playfoot 01825 830511

CPR DEMONSTRATION - FIVE ASHES VILLAGE HALL

Tuesday, 21st May at 6.30pm - to reserve your place please contact Geoff Gregory on geoff.gregory@outlook.com or 01825 830642. Only 20 places are available so please do book well in advance.

N.B.: See "Useful Information" at the beginning of the Newsletter for more information.



PUBLIC OPENING TIMES

Monday	09.00 –11.00
Wednesday	09.00 –12.00
Friday	09.00 –11.00

OFFICE ADDRESS

Mayfield & Five Ashes Parish Council

Old Manor House, High Street,
Mayfield TN20 6AL

☎ 01435 873784

F 01435 873726

✉ clerk@mayfieldfiveashes.org.uk

www.mayfieldfiveashes.org.uk



Councillor contact details

Paul Amans

☎ 01435 872106

✉ paul.amans@mayfieldfiveashes.org.uk

Tommy Buck

☎ 07718 787748

✉ tommy.buck@mayfieldfiveashes.org.uk

Howard Blakebrough

☎ 07850 869881

✉ howard.blakebrough@mayfieldfiveashes.org.uk

Andrew Burnett

☎ 07919 002139

✉ andrew.burnett@mayfieldfiveashes.org.uk

Chris Dines

☎ 07557 238738

✉ chris.dines@mayfieldfiveashes.org.uk

Jo Eates

☎ 07876 032656

✉ jo.eates@mayfieldfiveashes.org.uk

Paul Jarvis

☎ 07730 382482

✉ paul.jarvis@mayfieldfiveashes.org.uk

Martin Lawson

☎ 07776 137557

✉ martin.lawson@mayfieldfiveashes.org.uk

Chris Lilly

☎ 01435 873631

✉ chris.lilly@mayfieldfiveashes.org.uk

Joel Marlow

☎ 07969 078643

✉ joel.marlow@mayfieldfiveashes.org.uk

Ian Parker

☎ 07971979137

✉ ian.parker@mayfieldfiveashes.org.uk

Andrew Ratcliffe

☎ 01435 873310

✉ andrew.ratcliffe@mayfieldfiveashes.org.uk

Raj Sharma

☎ 07532 003174

✉ raj.sharma@mayfieldfiveashes.org.uk

Sally-Ann Tibbles

☎ 01435 872469

✉ sally-ann.tibbles@mayfieldfiveashes.org.uk

Rodney Warren

☎ 07860 628844

✉ rodney.warren@mayfieldfiveashes.org.uk

www.mayfieldfiveashes.org.uk

WADHURST WINDOW

WADHURST AND DISTRICT FLOWER CLUB (NAFAS)

The Club's first demonstration of 2024 took place on March 7th when the ever-entertaining Stephen McDonnell inspired all those present with his flair. Stephen has designed displays for Sussex Area Sense of Place at Lancing Chapel and Flower Power at Leonardslee so had plenty of amusing anecdotes to enhance his demonstration.

The next meeting of the Club will be on April 4th, a demonstration entitled Calendar Moments. The meeting on May 9th will be a workshop, during which members will be shown how to make a Buttonhole. This could be a very cost saving event if you have a wedding to organise in the near future.

Wadhurst Flower Club meets at Stonegate Village Hall where an adjacent carpark allows easy access to the venue. We are a friendly group of people who would welcome new members, so if you are interested in finding out more, please contact Sonia 01892 875671 or Debbie on 882851. We look forward to your call.

WADHURST BOWLS

Pictured is our Club Treasurer, Heather Worton, receiving a sponsorship cheque for the 2024 season from the Jempson's Foundation at their Peasmarsh superstore. We are grateful to Jempson's for their continuing support of the club as indeed we are to all the local businesses who help keep Wadhurst Bowls one of the top clubs in the county. Our list of sponsors and supporters continues to grow but at the time of writing they include: Specsavers (Tunbridge Wells); Tate Fencing and Automation; Jempson's Supermarkets; Wadhurst Probus Club; Archway Builders (Burwash); Dale Hill Golf and Hotel; Ben Grieg Motors; C. Waterhouse & Sons; NFU Mutual. We ask all our members to support these generous organisations.



They have shown trust and faith in us and we now need to show the same support for them. We start the season on Saturday, 20th April with a 'drive' involving as many club members as we can squeeze onto the green at once followed by a friendly match against Grosvenor (Tunbridge Wells) on 27th. We start the defence of our Horam League title, away at Rotherfield, on Sunday, 28th. Think you might like to have a go? We will be hosting open sessions on Monday, 27th May between 11 - 2pm as part of Bowls England's Big Bowls Weekend. Can't wait that long? (or make that date?) then contact Laurence on 07714 935915 and we can arrange another time. Keeeeep Bowling!

www.wadhurstbc.com

MAYFACS

MAYFACS (Mayfield & Five Ashes Community Services: Charity No 1166647)

London House, High Street,
Mayfield, TN20 6AQ
www.mayfacs.org.uk



HELPLINE 873888 (answerphone system)
Please note MAYFACS Post Box is situated at the back entrance to the office (please follow the signs from outside the entrance of St. Dunstan's Church)

OFFICE OPENING TIMES: Monday, Tuesday and Wednesday between 10am - 1pm every week. Helpline phone number is monitored Monday to Friday only.

BANK DETAILS: (for donations, payments of trips and activities)

Mayfield & Five Ashes Community Services (MAYFACS) Account No 00029924 Sort Code 40-52-40

APRIL NEWS

Bingo Night Saturday, 13th April 7.30pm
at Mayfield Scout Hut – come along and help raise funds for MAYFACS! No booking required, just turn up and purchase bingo cards on arrival. Raffle and refreshments available. FREE minibus transport will be available to and from the venue (pre-booking needed).

MAYFACS First Challenge Event Fundraiser. We are so excited to announce this fundraiser, raising money for MAYFACS by running this year's TCS London Marathon on April 21st. To make it even more fitting, our star runner is Matthew Holland, running to honour the fantastic work his Mum, Shirley, and the team have done over the years.

There is a dedicated article on Matthew in the Village People section of this Newsletter where you can find out how to sponsor him. We send Matthew all our thanks, strength and energy for the big day, and look forward to letting you all know how it goes afterwards. If anyone is heading into London to support the marathon, please look out for Matthew in his MAYFACS top and cheer him on loudly. Thank you to everyone for supporting this season's MAYFACS Matinee Films, showing 11 fantastic films, and welcoming over 300 people throughout the season. Thank you also to Andrew Ratcliffe for arranging and hosting the films and the team of brilliant volunteers who run the events throughout the season. The next season begins in October, so look out for more information on our future films nearer the time!

VOLUNTEERING OPPORTUNITIES FOR MAYFACS

With such a variety of activities, support and services that MAYFACS offers every day within our community, we could not do any of this without the help of our volunteers. In order to keep supporting our community we really do need more volunteers to help us.

Volunteering within our community doesn't need to be a regular or a big time commitment but can work around your availability. We are specifically looking for: Befriending volunteers (visits, phone calls, individual support); Minibus drivers (for matinee film season, trips or activities); Community car drivers (for medical appointments). If you are interested in volunteering and would like more details on any of the above roles, please contact Becky on becky@mayfacs.org.uk

REGULAR ACTIVITIES

Monday	Yarners (chat and knit, sew, crochet)	Sew Inspired, Mayfield High Street 1.30-3.30pm, £2. (Not Bank Holidays)
Tuesday	Tuesday Chat (with refreshments)	Colkins Mill Church, Station Road, Mayfield. 2-3pm, £2. (Not first Tuesday of the month)
	Tuesday Afternoon Club (Social group including speaker, raffle and light afternoon tea)	First Tuesday of the month in COLKINS MILL CHURCH (change of venue) 2-3.45pm, £3. Please bring a small prize to share on the raffle if available.
Wednesday	MAYFACS "Little Munchkins" Baby and Toddlers Group (Term time only). Join us every Wednesday, with activities for all, from new borns to pre-school age! Activities include craft, sensory play, and fancy dress! We welcome all parents, grandparents and carers.	Every Wednesday in the Scout Hall 9-11 am, £3 per family. Refreshments provided but please bring your own lidded cup.
	Wednesday Chat (with refreshments)	Five Ashes Village Hall, 2-3pm, £2. Every 2nd and 4th Wednesday of each month. Transport available, please book this in advance.
Thursday	Crowborough Community Café (for those living with dementia and their carers)	Crowborough Oasis Church and Community Café. Last Thursday of the month 2-4pm, £3.
	Poetry 1st Thursday of the month 11am-12.30pm, £2 at Come along and explore the world of poetry in a fun and relaxed social setting. I	Coach House Cottage, Royal Oak Mews. £2. Please contact Pat Robson on 872445.
	Middle House Lunches (Invitation only - Two course Lunch and Coffee) for those who live alone and are aged 70+ years young) Last Thursday of each month	Middle House special discounted rate of £12.50 per person. Please contact Freya on 873888 to be added to the list. Our volunteer Sue Wren will be ringing around and arranging this for us.
Friday	MAYFACS FILM CLUB (Matinee Films) continue at FIVE ASHES VILLAGE HALL February 10 th : King Richard February 24 th : Cabaret March 10 th : Operation Mincemeat	Doors open at 1.30pm, Film starts 1.45pm. £6 admission on the door. Transport runs between Mayfield and Five Ashes, leaving from Memorial Hall at 1.20pm and St Thomas of Canterbury at 1.30pm. No need to book, please just wait at the allocated stops! Additional cost of £3.
	Scrabble/Games/Cribbage 3rd Friday of the month (tbc venue)	2-4pm, £3 Bring along a game to play with others. Contact the office for confirmation of details.

MAYFACS Shed holds 3 sessions every week for anyone to come along and join in. With inside and new external workshop spaces available across all sessions every week, as well as lots to get stuck into in the community garden, there is plenty to get involved in whenever you are available. New Shedders always welcome. For more information, please visit our website www.mayfacs.org.uk/theshed

The next **Repair Café** will be at **FIVE ASHES VILLAGE HALL** on **Saturday, 20th April 10am – 1pm** and will be our annual **Community Repair Café**. Come and find out more about our Repair Cafés, join us for some tea and cakes (you do not need to bring a repair to attend) and find out more about our MAYFACS Shed and MAYFACS community.

Repairs will be accepted from 10am through to 12.15pm and we aim to fix as many items as we can on the day. So please bring along those gardening tools needing a little TLC, or the broken

ornaments that need bringing back to life. If we cannot repair it, we will suggest alternative options where available.

MONTHLY TRIPS

Thursday, 18th April

Brighton City (Shoreham) Airport £15

Thursday, 16th May South Brockwells Farm and Shop and Café, Uckfield £10

Friday, 7th June Festival of Flowers in Chichester Cathedral Coach Trip £35 – just a few places available

Thursday, 20th June Farleys House and Gallery, Chiddingfold £32

Thursday, 18th July Busi Jacobsohn Vineyards tour and tastings, Eridge £36

Please visit our website

www.mayfacs.org.uk for updates of weekly activities or contact us at the MAYFACS

Office on 873888. You can also join our monthly eNewsletter mailing list to get full details on everything that we do to support our community by contacting clare@mayfacs.org.uk.

PARISH COUNCIL NEWS

Due to unexpected circumstances on Parish Council news for April.



we are unable to provide an update

Parish Council Meetings

The meeting schedule on the website: <http://www.mayfieldfiveashes.org.uk/> shows this month's Council and Committee meetings as well as agendas, minutes of meetings and other meeting documentation

Janna Todd, Parish Clerk

Old Manor House, High Street, Mayfield TN20 6AL

Telephone 873784 E-mail: clerk@mayfieldfiveashes.org.uk

DATES FOR YOUR DIARY

REGULAR WEEKLY GROUPS

Monday	Art Club	Five Ashes Village Hall 10-12.30pm
	Chair-based yoga	Scout Hall 10 - 11am Not Aug/Dec/April
	Yoga	Scout Hall 6.30 – 7.45pm
	Ideal Performing Arts	Five Ashes Village Hall 6.00 – 8.00pm
	Table Tennis Club	Five Ashes Village Hall 8.15-21.45pm (Sept-May)
Tuesday	Pilates	Five Ashes Village Hall 8.30-9.30am
	Chair-based yoga	Scout Hall 10 - 11am Not Aug/Dec/April
	Circle Dance	Scout Hall 2.30 – 4.30pm
Wednesday	Pilates	Five Ashes Village Hall 6.15-7.30pm
	Pilates	Five Ashes Village Hall 9-10am
	Discofit Gold - Fitness Dance	Five Ashes Village Hall – 10-11am
	Creative Social	Sew Inspired High Street 10am – 1pm
	Heathfield Fitcamp	Five Ashes Hall - 18.30-19.30
	Studio Dance	Five Ashes Village Hall – 18.50-19.50pm
	The Rose & Crown Quiz	Rose & Crown, Fletching Street, 7.30pm
	Mayzing Choir practice	Mayfield Scout Hut: 8.00 – 10.00pm
Thursday	Pilates	Five Ashes Village Hall – 10.30–11.30am
	Baby Explorers	Five Ashes Village Hall – TBC
	Happy Tai Chi	12-1pm
	Mayfield Handbell Ringers	London House, 4-5.30pm
	Pilates	Five Ashes Village Hall – 5-6pm
	Cogs – School Years 4-6	Colkins Mill Church 6.30-8pm
	Five Ashes Rifle Club	Five Ashes Village Hall – 7-9.30pm Sept-April
Friday	Happy Tai Chi	Five Ashes Village Hall – 7-8pm
	Art Class	Five Ashes Village Hall – 10.30-12.30pm
	Yoga	Scout Hall 10 – 11.15am
	Pre & Post Natal Exercise	Scout Hall 11.30am
	Junior tennis coaching	Mayfield Tennis Club - 3.30 onwards
	Ideal Performing Arts	Five Ashes Village Hall 5.00 – 8.00pm
	Mayfield Band rehearsal times: The Bandroom, Court Meadow Beginners from 5pm; Junior group 6-6.30pm; Youth Band 6.30-7.30pm; Senior Band 7.45-9.45	
	Cogs – School Years 7-9/10	Colkins Mill Church 7-8.30pm Year 10s 7.45pm
Saturday	Saturday Picnickers	London House 12.30-2.30pm

APRIL

Tuesday	2	Tuesday Afternoon Club	Colkins Mill Church, 2 - 4pm
Thursday	4	MAYFACS Poetry Group	Royal Oak Mews, 11am
Thursday	4	Wadhurst & District Flower Club monthly meeting: demonstration of 'Calendar Moments'	Stonegate Village Hall, 1.45pm

APRIL CONTINUED

Saturday	6	Churchyard Working Party	St Dunstan's, 10am - 12.30pm
Tuesday	9	Mayfield Evening W.I. - talk on 'The Art of the Goldsmith'	Colkins Mill Church 7.15pm
Thursday	11	Middle House Lunch (by invitation only)	Middle House, 12.15 - 2.45pm
Sunday	14	Mayfield Gardens open for charity	Penns in the rocks', near Groombridge, 2 - 6pm
Tuesday	16	Mayfield Horticultural Society: talk on pest & disease control	Colkins Mill Church, 7.30pm
Thursday	18	MAYFACS trip to Brighton City Airport	
Friday	19	Mayfield Golf Society: monthly meeting	Seaford (Blatchington) Golf Club, 11am
Friday	19	Mayfield Local History Society: talk on '3 Castles and an Ironmaster's House'	Scout & Guide Hall, 7.30pm
Saturday	20	Wadhurst Bowls Club start of season 'drive'	
Saturday	20	MAYFACS Community Repair Café	Five Ashes Village Hall, 10am - 1pm
Friday	26	START OF MAYFIELD FESTIVAL: Performance of 'Macbeth'	St Dunstan's Church, 7.30pm
Saturday	27	Wadhurst Bowls Club friendly match against Grosvenor (Tunbridge Wells)	Contact: 07714 935915
Saturday	27	Mayfield Gardens open for charity	'The Oast', Fletching Street, 11am - 5pm
Sunday	28		

MAY

Saturday	4	Mayfield Fire Station & Friends of Mayfield Primary School: Charity Car Wash	Mayfield Fire Station, 10am - 3pm
Saturday	4	Mayfield Festival: The London Community Gospel Choir	St Dunstan's Church, 7.30pm
Wednesday	8	Mayfield Festival: 'Gin & Phonic' by Oz Clarke and Armonico Consort	Mayfield School, 7.30pm
Thursday	9	Wadhurst & District Flower Club monthly meeting: workshop on how to make a buttonhole	Stonegate Village Hall, 1.45pm
Tuesday	9	Mayfield Evening W.I. - talk on 'The Art of the Goldsmith'	Colkins Mill Church 7.15pm

MAY CONTINUED

Saturday	11	Mayfield Horticultural Society: plant sale	Memorial Hall car park, 9 - 11am
Saturday	11	MAYFAIR	1PM - 4PM HIGH STREET
Saturday	11	Churchyard Working Party	St Dunstan's, 10am - 12.30pm
Thursday	16	MAYFACS trip to South Brockwells Farm, Uckfield	
Saturday	25	Mayfield Tennis Club: Open Day	11am - 2pm
Monday	27	Wadhurst Bowls Club open sessions	11am - 2pm Contact: 07714 935915
Friday	19	Mayfield Local History Society: talk on '3 Castles and an Ironmaster's House'	Scout & Guide Hall, 7.30pm

JUNE

Saturday	1	Churchyard Working Party	St Dunstan's, 10am - 12.30pm
Sunday	2	Mayfield Bonfire Society: Open Gardens in The Warren & East Street	1.30 -- 5pm
Friday	7	MAYFACS trip to Festival of Flowers at Chichester Cathedral	
Saturday	8	St. Dunstan's Food and Craft Market	St Dunstan's, 11am - 3pm
Saturday/ Saturday	8 / 9	Open Garden Hoopers Farm	11am-5pm
Wednesday	12	Mayfield Horticultural Society: annual outing to Clinton Lodge Gardens, Fletching	
Thursday	20	MAYFACS trip to Farleys House and Gallery, Chiddingly	
Saturday	22	Mayfield Bonfire Society: Rocky Horror Picture Show sing-along	Five Ashes Village Hall, 7.30 - 11pm
Saturday	8	Open Garden Hoopers Farm	11am-5pm

JULY

Saturday	6	Churchyard Working Party	St Dunstan's, 10am - 12.30pm
Saturday/ Sunday	13/ 14	Mayfield Open Gardens	See article
Sunday	14	Art exhibition in support of MAYFACS	London House, noon - 5pm
Thursday	18	MAYFACS trip to Busi Jacobsohn Vineyards, Eridge	
Saturday	20	Mayfield Summer Show	Scout & Guide Hall, 2.30pm



Above, Parish Council Tree, Court Meadow, Below: Crocuses, Mayfield



Herons Folly Garden



Apple Trees

November through March
And

Friday Veg Stall

8:00am – 12:00pm

During the Growing Season

Apple Juice, Honey, Cider Vinegar and Vegetables
Available Middle House Deli
and the House Cafe



All products are organic
www.heronsfollYGarden.co.uk
(01435) 873608



THE SISTERS AND FRIENDS OF HOLY CROSS CARE VILLAGE INVITE YOU TO COME AND ENJOY

THE CAKE AND WINE CLUB CHOIR



SATURDAY 27 April 2024 AT 2:00PM

IN THE OSBORN ROOM AT HOLY CROSS PRIORY, LEWES
ROAD, CROSS-IN-HAND, HEATHFIELD, TN21 0TS

FOLLOWED BY TEA AND CAKE IN THE BOUGHTON
LOUNGE

Ticket price £10.00 per person.

Please purchase tickets in advance from: Care Home Reception on 01435
863764 or Nigel English on 07568 138534. Alternatively, email
friends@holycrosscare.co.uk

This is a Holy Cross Priory event supported by the Friends of Holy Cross Care Village.

Joali, Maldives



The Travel Concept

YOUR LOCAL
TAILOR-MADE
TRAVEL
SPECIALISTS



UNBIASED, PERSONALISED TRAVEL ADVICE
Your Perfect Holiday Starts Here

LOCAL INDEPENDENT TRUSTED

"Bianca and Tracy are amazing at tailoring a holiday to suit any requirements, whether a skiing trip for a large group or something more intimate. We have just returned from a fantastic "Bucket List" holiday to the USA. It all went like clockwork. You are both exceptional!" Mr H Sept 2023

DO YOU LOVE TO TRAVEL?
SCAN THE QR CODE TO VISIT OUR WEBSITE

📞 01435 866 555 ✉️ ASK@THETRAVELCONCEPT.CO.UK

The Travel Concept @TheTravelConceptGirls



THE ARTISAN DESIGNERS



SPRING SALE

THE BULL HOUSE STUDIO

OFF LAKE STREET, MAYFIELD TN20 6PS

WEDNESDAY 1ST-FRIDAY 3RD MAY
10AM-4PM

Brigitte 07855 385 824

brigitte.theartisandesigners@gmail.com



THE ARTISAN DESIGNERS



Decoupage with a Twist

Commissions welcome



Please call for opening times

Brigitte 07855 385 824

brigitte.theartisandesigners@gmail.com



The Artisan Designers Ltd
at The Bull House Studio
off Lake Street Mayfield TN20 6PR



GA CARPENTRY & KITCHENS

• SINCE 1997 •



Since 1997 we've specialised in all aspects of carpentry and joinery. We're experts in **bespoke** wardrobes/cupboards, Kitchens, flooring, windows, doors, loft conversions, period and modern property works.

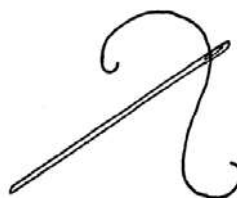
Checkatrade approved, full project management and full public liability.

For a free no obligation quotation
please call us on **07977 055637**
enquiries@gacarpentry.co.uk

www.gacarpentry.co.uk



The Hand Sewn Home



Bespoke
Curtains
Roman Blinds
Cushions

Anya Marsh
[@thehandsewnhome](http://thehandsewnhome)
07795410093

Comprehensive eyecare in Crowborough

NHS EYE TESTS

HANDMADE FRAMES
& QUALITY LENSES

SUNGLASSES

CONTACT LENSES

LOOK FABULOUS, SEE BEAUTIFULLY



ARTHURHAYESEYECARE.CO.UK | 01892 664826
CROWBOROUGH CAMPBELL HOUSE, CROFT RD, CROWBOROUGH TN6 1DR



Tunbridge
Wells
Eye
Centre



Tunbridge
Wells
Eye
Centre

7 Vale Avenue
Tunbridge Wells
TN1 1DJ
01892 240 200



www.tunbridgewellseyecentre.co.uk

MAYFIELD PODIATRY



High Street, Mayfield

www.mayfieldpodiatry.co.uk

01435 873848

Routine Footcare – nails, corns & callus
Neurological & Vascular Assessments
MSK & Gait Observations
and Diabetic Foot assessments
Home visits available



Mayfield Podiatry
High Street
Mayfield
East Sussex TN20 6AQ
01435 873 848



WE'VE EXPANDED!
CURRENTLY TAKING ON NEW PATIENTS

Telephone:
01435 873070

Email:
info@woodhilldental.co.uk

Website:
www.woodhilldental.co.uk

Address:
Woodhill Dental Centre
Station Road
Mayfield
East Sussex
TN20 6BW

FIND US ON SOCIAL MEDIA

www.facebook.com/woodhilldentalcentre
[@woodhilldentalcentre](https://www.instagram.com/woodhilldentalcentre)

The Joint and Back Clinic Nigel Kettle Registered Osteopath

28 Years Experience. Osteopath
located just outside Mayfield Village in
Roselands Avenue with Easy Access
and Free Parking

Osteopathy, Acupuncture, Injury
Rehabilitation, Electro-Therapy



Call **07939 129626**
www.jointandback.com

Chartered Physiotherapist Katharine Lees-Jones MCSP

Home visits only

- Musculo-skeletal problems
- Rehabilitation after orthopaedic or general surgery
- Muscle stiffness/aches and pains
- Loss of mobility /balance/ confidence

I also offer Soft tissue massage and Dry
Needling (Western Acupuncture based
on physiological principles)

Please contact for an informal chat:
01435 884141 or 07765 200423



Melina Joy
OPTICIANS

59 High Street
Heathfield
01435 868181
www.melinajoy.co.uk

The advertisement features a portrait of a middle-aged man with grey hair and a beard, wearing glasses and a pink blazer. The background is a dark green with a light green circular graphic element.



Melina Joy
OPTICIANS

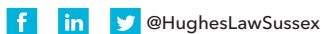
Hearing clinic
Free hearing assessments

59 High Street, Heathfield
01435 868181 www.melinajoy.co.uk

The advertisement features a close-up of three hearing aids on a wooden surface, with a smartphone displaying a hearing aid app in the background. The background is a blurred image of a hearing aid clinic.

Hughes

SOLICITORS



Putting your interests first

- Private client services
- Wills and trusts
- Estate administration
- Residential property

19 High Street, Heathfield TN21 8LU

01435 890101

info@hugheslaw.co.uk

www.hugheslaw.co.uk

CREATE BALANCE

ACCOUNTANTS, TAX & BUSINESS PARTNERS



WHILST YOU LOOK AFTER YOUR
BUSINESS, WE'LL LOOK AFTER YOU.

01892 311890

TAX RETURNS

COMPANY
ACCOUNTS

BUSINESS
ADVICE

FD & CFO
SERVICES

BOOK A FREE CONSULTATION



HELPING INDIVIDUALS & ORGANISATIONS

BOOKKEEPING

TRUSTS &
ESTATES TAX

TAX ADVICE

HR SUPPORT

enquiries@createbalance.uk

www.createbalance.uk

Tester&Jones

Your local independent funeral service

Tel 01892 611811
(24 hours)

"You were such a comfort
to us when we needed it."

When someone dies there must be time to grieve and reflect on the life we've lost - yet there are people to inform, forms to sign and a funeral to arrange. It's comforting to know that a local, independent and personal funeral service is available at the end of a phone - 24 hours a day.

- Memorial Masons
- 24 hour service
- Pre-paid funeral plans
- Bereavement Support Group
- Member of The National Society of Allied & Independent Funeral Directors

London Road, Crowborough
East Sussex, TN6 2TT

E - information@testerandjones.co.uk
W - www.testerlandjones.co.uk



YOUR LOCAL INDEPENDENT FEMALE OWNED & LED FUNERAL DIRECTOR

5 STAR REVIEWS *****

I have lost count of the number of people who attended the service, who have since commented to me - I want my funeral to be like that! What better recommendation could there be?

© Mulcahy

PROVIDING A TRULY PERSONAL SERVICE

At White Feather, you will only ever have one point of contact. Being a small, independent means you get a truly personal service from us. Lucy will meet you and your family when she brings your loved one into her care; look after them herself at her Heathfield premises; meet with you to discuss the arrangements and be your funeral director on the day.

Providing a familiar face every step of the way.

White Feather
FUNERALS



(01435) 408650 24 hours, 7 days a week.

www.whitefeatherfunerals.com

hello@whitefeatherfunerals.com

THE BARN, STATION APPROACH, HEATHFIELD, EAST SUSSEX, TN21 8LG.

LOCAL CARER

Do you, or someone you know, need an extra pair of helping hands?
I'm a Carer with over 20yrs experience, living in Buxted, & happy to travel further afield.
I have excellent references too, that I'm happy to share...



I can help with:

- * **Personal care**
- * **Shopping**
- * **Cooking**
- * **Medicine reminders**
- * **Light housekeeping**
- * **Errands**
- * **Companionship**



...& many other duties

If you feel I could be of assistance, then please don't hesitate to contact me on:

07779 - 353587

ELITE HOME CARE



SERVICES

- Hypertension monitoring
- Phlebotomy
- Wound dressings/suture removal
- General companionship
- Morning routine assistance
- Guidance taking prescribed medicine.
- Meal preparation
- GP and hospital visits

ABOUT

- Service provided by a Registered General Nurse
- Dedicated to caring for the community
- Assistance and care provided within 48 hrs.
- 2-4 hourly visits



For more information, please contact Anna Agnew RGN

07880 791002

Annaagnew26@gmail.com



Live-in Care

We are a local family run agency specialising in live-in home care.

We offer a realistic alternative to residential care, providing our clients with one to one live-in care in the comfort and security of their own home.

We are based in Tunbridge Wells and provide live-in services to the local areas of Kent & Sussex.

Tunbridge Wells 01892 518400

www.bespokecarecompany.co.uk



Yoga

SCOUT & GUIDE HALL

Monday 6.30pm-7.45pm

Friday 10.00am-11.15am

sarah@sarahratcliffeyoga.co.uk

Registered British Wheel of Yoga Teacher

01435 873310, 07721 009549



creative, seasonal food



*Simple, inviting food,
bursting with flavour &
stylishly presented for
Canapé Receptions,
Garden Parties, Buffets,
Weddings, Dinner Parties,
Family Weekends &
Events*

**My creative menus are inspired by
the seasons and feature local,
organic produce**

Please contact Sarah Litchfield

07753 821120

sarah@elmgreen.co.uk

www.elmgreen.co.uk

Peter d'Aguilar

FURNITURE RESTORATION

**Repairs & renovation
French polishing
Furniture valeting service**

**20 years' experience
Free estimates
Based in Mayfield**

01435 873298 / 07555 253432

peterdaguilar@talk21.com

Is your
Will
up to date?

Local Will Writing Service

We provide a Professional Will Writing Service in the comfort of your own home at a time convenient to you.

For a **FREE** Will Review & help with all types of Wills, Trusts, Lasting Powers of Attorney and Probate.

CALL OUR LOCAL SPECIALIST

Tony Nunn
0800 1698038



Institute of Professional Willwriters

EKW
LEGACY PLANNING

www.ekwlegacyplanning.co.uk



Certified Arborists Specialising in:

Tree Surgery - Tree Management Stump Removal



info@acetotaltreework.co.uk



07715 231 268

D.J. CASEY TREE CARE

TREE SURGERY

HEDGE CUTTING

GARDEN MAINTENANCE

All tree work undertaken –
from pruning to felling,
hedges tamed and maintained.

NPTC Qualified and Fully Insured
with over 20 years experience.
All work carried out professionally and
to the highest standard.



For all your tree and garden maintenance needs

call **Darren Casey** on

01435 812005 or 07798 793176

Cobweb GARDENWORKS

We offer professional,
comprehensive
garden solutions &
maintenance services

Please contact Richard:

07852 549005

info@cobwebgardenworks.uk

www.cobwebgardenworks.uk



ALWAYS IN SEASON



- Drainage
- Fencing
- Brickwork
- Grass Cutting
- Shrub Clearance/Hedge Cutting
- Footings
- Patios



Bryn Gorringe

07585 391 165
 bggroundworks.co.uk
 contact@bggroundworks.co.uk

GROUNDWORKS AND LANDSCAPING



**Philip
Barnes**
GARDEN DESIGN

A local professional Garden
Design service creating
inspirational gardens.

My services include:

Full Garden Design

Planting Plans

Maintenance Advice



07971469909

philip@philipbarnesgardendesign.com
 www.philipbarnesgardendesign.com

**Sussex
Cutting
Garden**



Homegrown Beautiful Flowers

Bespoke floristry for
Weddings, Farewells and all events
Also Gift Bouquets & DIY flowers

www.sussexcuttinggarden.co.uk

caroline@sussexcuttinggarden.co.uk

Call 07951 161548

Coggers Cross, Horam TN21 0LG

Visits by appointment only

01435 873568

wellbrook
motor services

Wellbrook Motor Services offers complete service and maintenance packages for your car. Courtesy car or local collection/delivery are available to your home or place of work.

**Servicing**

All manufacturers and models incl. Hybrid & EV

**Air Conditioning**

Re-gas (R134A & R1234YF), service & repairs.

**MOT Testing station**

Same day MOT's & no re-charge fees

**Computer Diagnostics**

Diagnosis can normally be done while you wait

**Repairs**

- Tyres
- Clutches
- Exhausts
- Shock Absorbers
- Brakes
- Batteries
- Accessories

Opening hours: Mon-Thurs: 8:00 - 17:30
Fri: 8:00 - 17:00
Sat: Available by Appointment

www.wellmotor.co.uk**For All Your Security Needs**

- 24hr Locksmith Service
- No Call Out Charge
- Domestic & Commercial
- Lock Fitting (*Insurance Approved*)
- uPVC Door & Window Lock Specialists
- Garage Door & Lock Repairs
- On Site Key Cutting (*We come to you*)

Call Danny

01435 868493**07759 800694**Email: danny@keymarklocksmiths.comwww.keymarklocksmiths.com

Self Storage in Mayfield

6m x 2.5m (30cbm)
3mx2.5m (15cbm)
(Approx. capacity)

neale.robinson@wellbrookfarm.co.uk

07711 410476

Please email or phone for price and availability

HEFFLE CARS

MAYFIELD & HEATHFIELD

PRIVATE HIRE & TAXI
AIRPORTS-LONDON-DOCKS

LONG DISTANCE - COURIER SERVICE
CREDIT & DEBIT CARDS ACCEPTED
FAMILY RUN BUSINESS for 30 yrs

TEL: 01435 867287Email: kathi@hefflecars.co.uk**Proprietor: DAVID BLACKFORD**

R Magar

PAINTING & DECORATING

07811 772073

reg.magar@gmail.com

Home & Commercial. Interior
& Exterior. High Quality at
Competitive Prices.

www.rmagar-painter.com

K&S

**Kent and Sussex
IT Services**

Supporting Small Businesses
and Home Users

*Expert Advice . Tuition . Networking
Repairs . Health Checks . Security . Virus Removal
Back ups . Data Recovery*



01825 830881
07899 955289

www.kands-it.co.uk
enquiries@kands-it.co.uk

LOCAL ELECTRICIAN CHRIS MACRAE

**C MACRAE ELECTRICAL
ELECTRICAL WORKS & REPAIRS**

NICEIC REGISTERED

01892 669205

07885 458033

DIY Buddy

Need a hand with property maintenance?

Mayfield based experienced handyman
ready to help you with your DIY projects: -

Carpentry, landscape gardening, gardening
projects, house maintenance, woodwork
renovation, painting and decorating etc.

From small projects lasting a few hours to
more ambitious ideas lasting weeks call
Andrew if you need a hand.

Friendly, professional and extremely
hardworking.

Telephone 07909967052



Daryl Burton Carpenter/ Builder

All building works undertaken
including Bathrooms, Kitchens,
Wardrobes, House Maintenance and
Renovations

With over 30 years of experience in
the construction industry working
locally in Mayfield

Email: darylburton44@hotmail.com
TEL: 07790 790439



A Clean Sweep Ross Atabey & Son

Chimney sweeping - including smoke
test and certification

01435 812 153
07941 315214

Member of Association of Professional
Independent Chimney Sweeps

acleansweep009@gmail.com

www.facebook.com/acleansweeporam

J Lunnon Pools & Spas



J LUNNON & SON LIMITED

**We have the experience
Call 01892 610610**

**For all your pool & spa needs.
Construction, Maintenance,
Breakdowns, Energy efficient
heating, Chemicals & Equipment
(In store water analysis)
Gas Safe (CORGI) & OFTEC
registered engineers
Domestic & Commercial
Indoor & Outdoors**

J Lunnon & Son Ltd Master Plumbers



J LUNNON & SON LIMITED

**Fully qualified Gas Safe (CORGI)
OFTEC oil engineers
Experienced in old & new boilers
Devoted to energy saving & renewable
energy sources**

01892 610610

**No call out charge
Boiler breakdowns/ system problems
No job too big or small
Outstanding reputation & accurate time
keeping
Fully insured up to £10,000,000
Just call us!**

MAW Property Maintenance

Contact Miles on 01435 868823 07496 124 736



Internal and External Decorating.

AND: Carpentry, Guttering, UPVC Cleaning, Drain Rodding, Floor and Wall Tiling, Patio Pointing and Jet Cleaning, Panel Fences, Kitchen and Bathroom unit make-overs.....and much more.

Handyman Services - no job too small

Fully AXA Insured

rats **mice** **bedbugs**
ants
moth **fleas**
bees **woodworm**
wasps **squirrels** **cockroaches**
birds

- domestic & commercial
- service contracts
- unmarked vehicles
- senior citizen concessions



National Pest Technicians Association

go pest

fast, effective, reliable same day service

Call: 01323 811011

www.gopest.co.uk e:info@gopest.co.uk
pepperham, ripe, lewes, sussex bn8 6aw

Traditional Mole, Mice, Mink Rabbit and Squirrel catcher

(No poisons used)

Traditional methods only

PETER KING

Home 01892 520287

Mobile 07432 813614

pkingmoles@outlook.com

Mayfield and Five Ashes



Pressure Washing
Services

We clean

- Driveways & patios
- Solar panels
- Property exteriors
- Horse boxes
- Cladding

Contact : 07872 170586

Email: pm_french85@live.co.uk

Visit: www.pmfservices.co.uk

PMF Services on Facebook



FATHER'S DAY

Join us on 16th June and treat Dad to our delectable spring menu plus Father's Day specials including our staple delicious roasts. Make memories in one of Elite's most stunning locations.

Here's hoping the weather will allow delicious cocktails in our large garden area where dogs are most welcome and we have a large playing area for the kids to play to their heart's content.

Find out more and book at elitepubs.com

 [the.lazy.fox.markcross](https://www.instagram.com/the.lazy.fox.markcross)  [thelazyfoxmarkcross](https://www.facebook.com/thelazyfoxmarkcross)



Sussex Country Getaways

Allens Farm Oast - Sleeps 8

Allens Farm Loft - Sleeps 2

www.sussexcountrygetaways.com

E: allensfarmsussex@gmail.com

 [@allensfarmoast](https://www.facebook.com/allensfarmoast)

 [@allensfarmsussex](https://www.instagram.com/allensfarmsussex)

MAYFIELD FESTIVAL OF

MUSIC & ARTS



Two weeks of breathtaking performances by outstanding artists, including:

IMOGEN COOPER • THE LONDON COMMUNITY GOSPEL CHOIR • OXFORD CAMERATA • RACHEL PODGER

BOOK NOW AT
MAYFIELDFESTIVAL.CO.UK

26-12
APR MAY '24



Scarlett's Frocks & Threads

2 Church View, High St, Mayfield TN20 6AB

01435 873520

www.scarlettsfrocksandthreads.co.uk

Bridal ♥ Prom



PROPERTY PROFESSIONALS
FOR OVER 120 YEARS



Lambert & Foster



Tunbridge Wells Road, Mayfield



Fletching Street, Mayfield



Fletching Street, Mayfield



Love Lane, Mayfield



Salters Green, Mayfield



The Warren, Mayfield

If you are looking to sell your property, get in touch with your local estate agency team today.

Call **01435 873 999**, email sussex@lambertandfoster.co.uk or visit www.lambertandfoster.co.uk

Professionally endorsed for your peace of mind



arla | propertymark

naea | propertymark



**IT'S
BACK!**

MAYFIELD **MAYFAIR**

**JOIN US FOR AN AFTERNOON OF
MUSIC, MAYPOLE DANCING, FOOD,
DRINK, CRAFT STALLS AND MORE!**

**A GREAT DAY OUT FOR THE WHOLE
FAMILY - YOUNG AND OLD!**

SATURDAY 11TH MAY 2024

1PM - 4.30PM

HIGH STREET, MAYFIELD