

# MAYFIELD & FIVE ASHES NEWSLETTER



# Gabriel Interiors

of Mayfield

FULLY  
FITTED

Made To Measure Curtains ~ Blinds ~ Shutters  
Soft Furnishings ~ Tracks and Poles ~ Interior Design Advice

FREE  
ESTIMATES

Please phone or email to book an appointment, for design advice or measuring, at the showroom or in your own home. We have a vast array of fabrics and materials to choose from and a breadth of experience to share with you.

 1 Church View, High St, Mayfield TN20 6AB



01435 873670



[www.gabrielinteriors.co.uk](http://www.gabrielinteriors.co.uk)

# The Hair Studio



**FREE CONSULTATIONS**  
**20% OFF\***

**Tel: 01435 873323**

7 High Street • Mayfield • East Sussex TN20 6AA

[www.hairstudio.uk.com](http://www.hairstudio.uk.com)

\*your first visit (cut and finish only)

# burnett's

Individual Property : Individual Service

[www.burnetts-ea.com](http://www.burnetts-ea.com)

We are proud to be recognised at the EA Masters awards in 2022 as one of the top 10% Estate Agents in the UK for sales!

Find us in the Best Estate Agents Guide 2023

Or even better – if you are selling, make us your number 1 choice!

## Mayfield Office

3 Church View House  
High Street  
Mayfield  
TN20 6AB

01435 874450

## Wadhurst Office

Clock House  
High Street  
Wadhurst  
TN5 6AA

01892 782287



Front cover: Bennetts Track Day at Oulton Park by Bennetts

Many thanks to Barbara Murray, and all the organisations for their photographs.

Please do send us your images to [mayfieldnewsletter2012@gmail.com](mailto:mayfieldnewsletter2012@gmail.com)

# WELCOME FROM THE EDITORS



We hope you will enjoy our packed February Newsletter. We are now in urgent need of help for our Advertising Secretary. Unfortunately, no-one has expressed interest in this position. **PLEASE, PLEASE** consider whether this is something you can help with. Our Advertising Secretary has health issues which mean she is unable to continue doing all she has done in the past and, at the very least, she needs some back-up. If no-one



comes forward, the Newsletter will not be able to function – **NO ADVERTISING – NO NEWSLETTER**. This voluntary role requires proficiency in at least Excel together with good organisational and interpersonal skills but **training can be given**. The work is flexible and can be carried out remotely. If you think this might be something for you, or someone you know, please contact [mfanadvertising@gmail.com](mailto:mfanadvertising@gmail.com) and we will forward a more detailed job description.

**Jeanette Hore & Philip James**

## DEADLINES AND HOW TO CONTACT US

**MONTHLY SUBMISSIONS** to [mayfieldnewsletter2012@gmail.com](mailto:mayfieldnewsletter2012@gmail.com) by noon on the 15<sup>th</sup> of the month. Please include your name, organisation, or the topic of your copy in the 'Subject' line of your email. Submissions must show the subject, name of author and a contact number in case of queries. No anonymous submissions will be accepted.

**FOR BLACK/WHITE & COLOUR ADVERTISING** email: [mfanadvertising@gmail.com](mailto:mfanadvertising@gmail.com). DEADLINE FOR BOOKING SPACE IS 10<sup>th</sup> WITH PDF ARTWORK BY 16<sup>th</sup>

**FOR ANNUAL £25 SUBSCRIPTIONS:** You can set up a standing order and pay online as follows:- £25 to Mayfield Five Ashes Newsletter; NatWest Bank, Sort Code 60-10-30; Account No. 60849975 or by cheque sent to Graham Soar, Owl Lodge, Tubwell Lane, Crowborough, TN6 3RJ. Payment must be received by the 19<sup>th</sup> of the month to receive the following month's edition by post. Don't forget to also send us your name and address - you can do this by email to: [mfansubscriptions@gmail.com](mailto:mfansubscriptions@gmail.com)

## USEFUL INFORMATION

### NATWEST MOBILE BANKING SERVICE

The service operates on Mondays (except Bank Holiday Mondays) from 1. 15 to 2. 15pm in the Memorial Hall overflow car park

**Bus Route 226** operates 3 days per week on **Tuesdays, Thursdays and Saturdays**. For fare paying customers a single trip to Crowborough is £2.00 and a return fare is £4.00. Concessionary passes are accepted on this service.

Departs from Southmead via the High Street then St. Thomas of Canterbury

Departs Southmead Arrives at Crowborough

10:16 10:47

12:16 12:45

Departs Crowborough Arrives at Southmead

11:45 12:16

13:15 13:46

## FEATURES

### **BOOK REVIEW: "Jobs For The Girls (The Age Of The Typewriter) by Ysenda Maxtone Graham**

For many ladies now seventy plus here is a wonderful trip down memory lane. The golden age of the typewriter at its height employed many thousands during the 1950s, 60s and 70s until at some time in the 1980s offices suddenly fell eerily silent as computer technology rapidly took over. Gone was a trade which for the best part of a century popular assumption had long believed was deathless: "Learn shorthand and typing - it will always be needed". Remember? Maxtone Graham's book makes for compulsive reading packed as it is with anecdotes, often hilarious, recalling all kinds of situations good and bad but redolent with nostalgia. Many "commercial class" girls began their training at thirteen while still at school then went to their first jobs as shorthand typists at fifteen. The more ambitious would then proceed to the status of secretary but for many clerking, often regarded as the Cinderella among careers, would be viewed as a stop-gap between schooldays and marriage. In later years however, returning to work of some kind became increasingly popular among women, either through desire or necessity, something not always predicted by the girls when starting out.

It is not just the world of the typewriter in which this book centres. Other careers are also featured here in an age before a flowering of female opportunities were to open up a vastly wider range of work experience. For those who left school without even a basic O-Level or "School Cert" pass there were still vacancies in shops, factories, hotels etc. but those with some qualifications could train as teachers, nurses, air hostesses among a few other things. Only a small minority who graduated from university were admitted into the higher professions. So much is recorded here in titillating detail but one curious phenomenon I have read here stands out in my mind. This is the fact that girls from the upper end of the social spectrum often did very similar work to those at the lower end. In both cases their work was often of the most menial kind as they were frequently employed as kitchen hands, the difference being that while girls from the poorer backgrounds were deprived of opportunity their more privileged counterparts were not encouraged to train for any vocation at all. For the latter it was often a case of waiting for the time when they hopefully could marry and cater for the lords of the manor!

Returning to the office, by the late 1970s "temping" became popular as permanent secretarial jobs were getting harder to obtain. The popularity was short-lived as this arrangement provided few opportunities for career advancement as the 1980s dawned. Inevitably much is now said in this book as to how the computer took over and increasingly more is said of the joys and the demands experienced by women as they entered the wider range of professions. The book concludes with the author's musings over the "phenomenon of the pushy mothers of today". Is so much of this stress on a daughter's success due to the frustration felt by the mother's lack of opportunity in her own day? I personally feel our age has come a long way from the early 20th century when women teachers, if they dared to marry, were forced to hide the fact. While Ms. Graham's book has been criticised by some as too biased towards some sections of society, I still believe it is worth a read.

**Cynthia M. Baker**

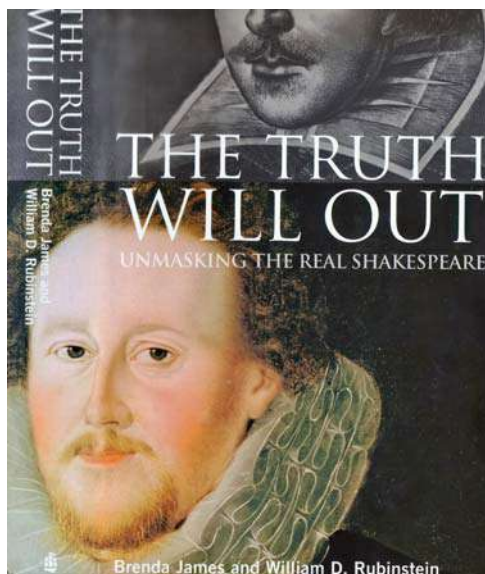
### **MAYFIELD'S SHAKESPEARE**

In 2005 a startling new book was published, which received national publicity. It claims that Henry Neville, who owned the Old Palace in Mayfield from 1583 to 1601, was in fact Shakespeare and wrote his early plays here, including "Romeo and Juliet" and "The Merchant of Venice". Did this mean that the search for balconies in Mayfield should begin, or seeking a model in Coggins Mill for Launcelot Gobbo, or links with "Titus Andronicus" that sets scenes in a forest and a Palace?

Its title was "The Truth Will Out" by Brenda James, published by Longmans. Since I had, coincidentally, done in-depth research into Henry Neville, I attended the book launch in London, which was

endorsed by Mark Rylance. The main claim is based on autobiographical research. Essentially the proposal is that repeated coincidences of date, place and events can fill the many gaps in what is known of the real Shakespeare's life. A number of books have been published since with the same claim, probably with an eye to the American market which has an insatiable appetite for conspiracy theories. The case is that William Shakespeare was an actor and theatre producer whilst a separate, educated and cosmopolitan person, Henry Neville, wrote the plays and poems. The condescending conclusion is that a man from the wrong side of the tracks was not capable of brilliance.

My own judgements are based on a decade of (youthful) teaching of Shakespeare, coupled with falling asleep reading Neville's collected letters in the British Library. I also uncovered a previously unknown collection of letters in the Berkshire Record Office relating to his Mayfield ironworks. Shakespeare's greatness lies primarily in his marvellous





use of language. Neville's writing is characterised by a bumbling struggle as he piles one clause after another, giving the impression that he has not planned the ending. An example from his letter of 8<sup>th</sup> February 1595 to his partner in the Mayfield Furnace, Robert Sackville (later Duke of Dorset), shows this: *"I understand by my servants whom I put in trust to deliver my ordnance unto you, that they have made delivery to your use [of deleted] at Millall, of 44 ton 200 and 3 quarters, and at Lewes of 28 ton and 1300 before you had received of me at Maidstone which I have your acquittance for, 79 ton and certain hundreds of ordnance, which in all comes to 152 ton and 3 quarters of a hundred, which is two ton more than I made bargain with you for."* Despite its commercial nature, the letter, shows a clumsy lack of regard for style; a man who could not write coherently.

One of the characteristics of the plays is the frequent conclusion that going against "the natural order of things" results in chaos and suffering. A man who allowed himself to be caught up in the Essex rebellion, resulting in a sentence in the Tower, hardly fits this bill. The plays show a remarkable lack of religious commitment; fate is often a force. For example: *"As flies to wanton boys are we to the gods; they kill us for their sport."* (*King Lear*). The plays were certainly not written by a fanatical Protestant whose main activity was to produce cannons to kill Spanish Catholics in the Netherlands. Neville appointed George Carleton as Vicar of Mayfield, described as a *severe Puritan*, and both his father and father-in-law decided to go into exile rather than live under Queen Mary's Catholic regime. The latter, Henry Killigrew, was the main English co-ordinator of opposition to Mary.

History has Henry Neville down as a minor figure, a man of poor judgement, an inadequate and reluctant Ambassador to France where he showed small-minded complaining rather than serious diplomacy. He was lucky not to be executed as a failed and timid rebel after the Essex rebellion. He spent the later years of his life on the verge of high office, never making it.

The academic reception to this cult has been rightly dismissive. The eminent Shakespearean scholar, Professor Sir Jonathan Bate writes that there is *not the slightest shred of evidence*.

My book "*Medieval Mayfield: Archbishops and Peasants*" is on sale in "*Sew Inspired*".

**Tim Cornish**

## **SUSSEX WILDLIFE TRUST**

### **Toad-In-The-Hole**

Once upon a time, the British people were divided. Impassioned debates raged throughout the land, truth and common sense became distorted, and the public rose up and demanded an answer. How did that toad get inside that rock?

In 1898, two burly workmen in a chalk quarry near Lewes cracked open a hollow chunk of flint. The solid rock, formed 85 million years ago, split open to reveal an



Credit: Dave Kilbey

airtight cavity at its core. To the quarrymen's amazement, entombed within the ancient flint was a dead toad.

'Toad-in-the-hole' hysteria soon hit the headlines. It seemed like every month the newspapers reported how someone had split open a rock and found a toad inside. Some of these toads had already croaked but others would inexplicably still be alive and hopping. The Victorian world was thrown into theological and philosophical panic. Clergymen preached that the Creator had placed the eternal amphibians in rocks at the dawn of time. Subscribers to Darwin's new theory of evolution were perplexed. Charles Dickens wrote of his bewilderment, while others believed it was simply sorcery. Scientists began burying living toads in sealed boxes to investigate the unfortunate animal's longevity.

The Lewes toad of 1898 is the world's only surviving artefact of the entombed toad craze. It now resides in Brighton's incredible Booth Museum of Natural History – one of my favourite places in the whole world. Amongst the many awe-inspiring exhibits at The Booth, you'll find a special cabinet dedicated to curiosities. In it, lying reverentially on a bed of maroon felt, there is 'Probably the most famous toad in the world'. Admittedly, when it comes to world-famous toads it's not a particularly crowded field, with only Toad of Toad Hall to contest the title. Alongside the original oval of cleft flint sits the shrivelled body of the infamous amphibian. The whole surreal exhibit is like a Kinder Surprise designed by Hieronymus Bosch.

But this cracked up flint isn't all it's cracked up to be. The Lewes toad was originally presented to the Brighton and Hove

Natural History and Philosophical Society by Charles Dawson. That's the same Charles Dawson who would soon be sticking some Orangutan teeth on a human skull and declaring he had discovered the 'missing link' at Piltdown, near Uckfield. In 1953, Dawson would be unmasked as a fraudster and the whole 'toad-in-the-hole' phenomenon would come crashing down, dismissed as poppycock.

**Michael Blencowe**

## **JAMES COLLINS GUITARS**

Guitar music has provided a soundtrack to my life from an early age, but I can't pretend to have been that interested in the actual instrument that, in the hands of a skilled musician can provide such variety and pleasure. But recently a member of my family had a guitar fixed at James Collins Guitars and that is how I came to be sitting in a showroom with James on an exceedingly rainy January afternoon surrounded by some of the most beautiful



guitars I have ever seen. Needless to say, I am now hooked.

James has always played the guitar and was in a band, but in 2004 having had trouble finding a reliable repair service, decided to travel to Michigan and learn the ancient skill of luthiery. A luthier, from the French word for lute, is a craftsperson who builds or repairs stringed and fretted instruments. On his return in 2007, he threw himself into this new world and built both an electric and an acoustic guitar and set up a repair shop, with the aim of providing a high quality and effective service. He found this a fruitful training ground where he was able to consolidate his skills and after spells at workshops in Winchelsea and Horam, he moved into the premises at Cross in Hand and has now been there for the last 7 years. He works

with three others, Ollie Goward, a skilled maker and repairer having learnt on an apprenticeship with day release at college in Eastbourne, Jude Swift a trainee who is hoping to do an apprenticeship in the autumn and Chris Skelly, a professional musician who repairs and sells amplifiers and speakers.

James and his team have made 70 hand-built guitars since moving to Cross in Hand. The process is slow and highly skilled, using traditional methods and tools with pencil lines, saws, planers, sanders, spoke shaves and routers rather than the more modern CNC route. A range of wood is used, for example: Ebony, flame or quilt Maple, English Walnut and Black American Walnut, Indian Rosewood, Cocobolo and Redwood. Some of it is imported from the West Coast of America





and it arrives in cuts called Billets; Koa comes from Hawaii and is used to make up the binding for top end guitars. James also sources wood from East and West Sussex, which includes Sussex Ash and Maple and he is hoping to acquire a large piece of a Sequoia Redwood from Sheffield Park which was struck by lightning and fell in a gale in November 2022. To collect this huge piece of wood, he will need the help of a mobile cutter who will slice the wood into manageable pieces on site. Once the wood arrives at James' workshop it will be kept covered outside for 2 to 3 years where it will mature and eventually reach the correct humidity which can be tested regularly by a small device which can also identify wood. The guitars are of high quality and James showed me a stunning example of twin guitars carved out of the same piece of wood, the top being Flame Maple over Brazilian Mahogany with Ziricote fretboards. The star of the showroom is the SapphireGTO, a hand-crafted masterpiece with a Spruce top and Flame Maple body bound in Hawaiian Flame Koa with an Ebony fretboard and lacquered in a deep sapphire blue. James is hoping to extend this top of the range model to include Ruby, Amethyst and Emerald. These guitars end up all over the world including Germany and the USA; it is a niche market with many builds being commissioned by enthusiasts who are prepared to put in the investment. James also sells second-hand high-end guitars including Gibsons, Fenders and Martins.

It is also possible to attend workshops which include the Pro Guitar Setup 1 Day Course held monthly with up to 6 people at a cost of £199.00, normally on a Saturday. This will provide participants with



the skills to set up both electric and acoustic guitars with confidence including fretboard treatment and fret polishing. Alternatively, there is the 3 day Build your Own Guitar course for 3 people which is run every other month on a Thursday, Friday and Saturday at a cost of £1249.00 where participants are provided with the expertise and craft to build a custom-made guitar which is taken home on the last day. Further details of these courses are available on the websites listed below. These courses have been attended by people with an age range of 14 - 70, the common bond being the love of guitars and an interest in how they are put together and work. Please see below for further information.

[www.jamescollinsguitars.com](http://www.jamescollinsguitars.com)  
[www.guitartechcourses.com](http://www.guitartechcourses.com) - 867333

**Barbara Murray**

## VILLAGE PEOPLE

This month, we are profiling **RODNEY WARREN**, one of our very newest Parish Councillors as part of our occasional feature on the newly formed Parish Council.

After a by-election in Five Ashes on 14<sup>th</sup> December, Rodney Warren was elected to the vacancy to represent the village on the Parish Council.

Rodney and his wife Helen have lived in Five Ashes, with their two wire-haired dachshunds, for three years, having lived in East Sussex for many years. They have four grown-up daughters who, with their families, all live in East Sussex or London.

After a career in law, Rodney is now semi-retired and keen to play a part as a Councillor in working to keep Mayfield and Five Ashes as the lovely area it is in which to live and work.

As a solicitor, Rodney specialised in Dispute Resolution and, in a representative role, spent many years at The Law Society in London. He was also a senior Civil Servant. With more time available he now enjoys golf and photography, and runs a small aerial imaging business.

Rodney says "although I still work a little, mostly legal problem-solving for small businesses, I'm lucky to have time to help others and I look forward to contributing to our community".



**N.B:- Note From The Editors: Meet Rodney Warren at Five Ashes Village Hall - Sunday, 4<sup>th</sup> February 11:00am - 12:00noon.**

### **TOMMI CALDWELL**

Long-time Mayfield resident, Tommi Caldwell has revived the former Freestyle site near Wadhurst with his business DART Motorsport, which he has run for many years.

Tommi, who also serves as a retained firefighter at Mayfield Fire Station, has taken over the former showroom and café, which can be found on the Wadhurst road out of Mark Cross. He was born and raised in Mayfield and attended Mayfield Primary School, Heathfield Community College, and Lewes 6th Form College, studying Sport and Science. He was introduced to tennis at Mayfield Tennis Club and was invited to train in a performance squad at Cross in Hand Tennis Club, where he competed at a high level nationally and represented the Club in the junior and senior





categories. He went on to achieve Level 3 in Tennis coaching, before opening his Motorsport business in 2015.

After the June closure of Freestyle Bikes, Tommi was determined to restore the location, offering a hub for locals and motorsports enthusiasts alike. As a Mayfield resident, Tommi understood what a landmark Freestyle was to residents and visitors and is committed to providing an exceptionally friendly, sociable environment centred around quality motorcycle service and the local community.

Tommi has years of experience working on high performance motorcycles. He is associated with competitive racing and sponsors 2 classes in the British Motorcycle Racing Club (BEMSEE) whilst also offering compliance support to No Limits Racing club with Dyno work track-side. He also set up and ran the only UK 4 stroke Karting championship. Now he and his DART Motorsport team are

thrilled to reopen the doors of this Wadhurst site, to offer exceptional service encompassing all types of bikes - whether ridden for recreation or competitive racing.

In addition to the motorcycle workshop, with its trained precision engineers, the revived showroom also features a popular café serving breakfast and lunch, which is dog-friendly and has circular walks available from the site. The café is situated in a lovely rural setting, with plenty of parking, ideal for socialising generally, as well as providing a venue for bikers and clubs.

Tommi hopes DART Motorsport will restore the community-focused environment, while expanding offerings within the setting.

The relaunch of the property by one of Mayfield's own represents an exciting new chapter rooted in hometown passion. As both business owner



and firefighter, Tommi is deeply invested in the vibrancy of his community. He would love you to come and meet him at the site on **4<sup>th</sup> February between 10.00 and 14.00 at the DART Motorsport Social Sunday** – Dyno Edition to view the workshops, browse a large variety of new and used bikes and enjoy a coffee and a breakfast bap at the café. Even if you are not a biker, the café is well-worth a visit. Put the date in your diaries now!

**Sue Smith**

## UP AND DOWN THE HIGH STREET

### RUSDENS HOME/POST OFFICE

For those of you who are not aware, Jo Eates has taken the difficult decision to close Rusdens after eight happy years. But, says Jo, "Fear not.....I am staying as the Postmaster and with Holly's help we will continue to run the Mayfield Post Office. The Post Office is closing on Friday 2nd February whilst the shop undergoes a refurbishment.

The Post Office will then re-open on Monday, 19th February and will continue with the normal hours."

### YOUR MAYFAIR NEEDS YOU

The Mayfair is back and 11<sup>th</sup> May is the date for your diaries. Or maybe sooner if you would like to get involved. I am mindful that arranging all the maypole dancing and music currently falls to me, and in the interests of succession, variety, and fresh ideas, I would love to hear from anyone else who might want to get involved. That could mean helping to go round the schools to teach the dancers, or if you are a musician you could perhaps help with accompaniment. What hopefully looks effortless on the day, actually takes a lot of work on the part of the musicians and dancers, with rehearsals starting this month. You don't need to know anything about the dancing, as I can show you the ropes, or should I say ribbons, and likewise the music, although if you have a little musical knowledge you will be off to a head start. It's a lot of fun, and very rewarding, and you will be working as part of the fantastic group of people that is The Mayfieldians.

If you are a musician who has never played folk, worry not. It's folk music, music of the people, and you just need to take the first step and have a go. We just need enthusiasm and a love of the music. Fiddlers, recorder players, accordionists, percussionists, guitarists – pretty much anything really, are all welcome, as long as you are reasonably competent. As a guide for younger players, maybe grade 4/5 would be the level, but there's no hard and fast rule.

Give me a call. You don't have to commit, and you can just tag along with me to see how it all works and take it from there.

**Simon Rudge** – 872007 - [simonorudge@gmail.com](mailto:simonorudge@gmail.com)



## THE MIDDLE HOUSE

**Just a taste of what's in store for 2024 .....**

**New menus for the New Year** - The Chefs are busy creating new menus for 2024 so watch out for some exciting changes but don't worry, the traditional classics will still be there! The website has the current menus and will be updated as soon as the new menus are ready [www.mhmayfield.co.uk](http://www.mhmayfield.co.uk)

**New opening times for 2024** - After a few challenging years we have now returned to opening 7 days a week with our very popular Carvery returning to Monday evening.

**Breakfast** - Start your day with a Middle House breakfast. Served Wednesday - Sunday 9am-11am in the modern brasserie with stunning views across the valley with outside terrace for dining in the warmer months!

**Afternoon Teas** - Widely proclaimed by those who have sampled our teas as 'One of the best in Sussex'. Served Thursdays, Fridays and Saturdays, they are a must to try. Vouchers are available as they make the perfect gift.

**Monday Night is Carvery Night** - If you haven't tried The Middle House Carvery then make this your New Year's Resolution! Every Monday from 5.45pm. Reservations strongly advised.

**Live music on the Terrace** - We very much look forward to the drier, warmer months when we will be restarting our very successful live music evenings, held on as many Thursday evenings as the Great British weather allows! We hope to have artists booked in the next few weeks so keep your eyes out for more information.

**Hope you have an amazing 2024.**



## WOODY'S OF MAYFIELD

Woody's of Mayfield has taken over from Terry Godden at Pin-Ups barber shop. "With 19 years of experience and previously owning a shop in Heathfield I have taken the chance to keep the barber shop in Mayfield alive. We will be reintroducing a senior citizen rate and a children's rate to our price list and we will also be changing the hours of the shop to include a late-night on Thursdays.

The shop will remain appointment only via the Booksy app that Terry uses. Terry will be back to join me every Tuesday and Wednesday.

I look forward to seeing you soon.

**Glen Wooden (Woody)**

## HALEY COOPER AESTHETICS CLINIC

I am Haley Cooper, owner of the new Aesthetics clinic which opened on the High Street at the beginning of the year. I

thought this would be the perfect way to tell you a little bit about us.

We are a medically led, multi-award-winning, fully insured Aesthetics clinic offering a large range of medical aesthetic treatments including anti-wrinkle injections, advanced facials and chemical peels, body sculpting treatments and skin assessments.

Stepping into the world of Aesthetics has always been my passion. For the past 6 years we have been running private clinics in Mayfield, Robertsbridge and surrounding areas but now I'm thrilled to announce our first High Street location in the heart of Mayfield. As a qualified Nurse Prescriber, I've dedicated my career to merging medical expertise with aesthetic artistry. The journey from Harley Street in London to Mayfield has been a culmination of years of learning, refining techniques and staying at the forefront of the industry's advancements. I'm lucky enough to have forged relationships with some of the industry leaders which keeps me at the forefront of the latest innovations and governance and have personally won multiple awards as has the clinic itself. In 2023 Gemma joined the team. She is a qualified level 3 Therapist and a specialist in body sculpting, skin tightening treatments and advanced facials including the popular HydraFacial and Medical Microdermabrasion.

The clinic is designed as more than just a space; it's a place where clients can experience a blend of professionalism and personalised care along with a warm welcoming atmosphere. With two dedicated treatment rooms and space for a third, the clinic is designed to provide a tranquil setting for individuals seeking a range of aesthetic solutions. For treatments we, of course, are appointment only but you can just pop in to collect any



of the wide range of medical grade cosmeceuticals we offer. These can also be purchased via our online shop and delivered to your home. Consultations are free and can be booked on our website or in person at the clinic if you are nearby.

What sets my clinic apart is the commitment to delivering results that not only meet but exceed expectations. I'm a great advocate for less is more and each treatment is thoughtfully crafted to enhance your natural beauty and boost your confidence. The amalgamation of tried-and-tested methods and cutting-edge techniques ensures that you receive the highest standard of care.

Mayfield High Street now has its own local destination for aesthetic excellence. I'm honoured to be a part of this vibrant community and look forward to welcoming clients to my clinic, where years of experience meet a passion for helping individuals look and feel their best. Here's to a journey of beauty, confidence, and self-discovery together.

[www.haleycooper.co.uk](http://www.haleycooper.co.uk) -

[clinic@haleycooper.co.uk](mailto:clinic@haleycooper.co.uk) - 873354

# OUR SCHOOLS

## MAYFIELD PRIMARY SCHOOL

On Friday, 12<sup>th</sup> January Robins Class braved the cold to go on a Bear Hunt and they weren't scared!

We looked for signs of bears, from footprints to scratch marks, we stumbled and tripped through the forest and squelched and squerched through the mud!

Finally, we tiptoed into what looked like a cave at the skatepark....and then we thought we heard something coming so we headed back to school at lightning fast speed! Safe to say we will not be going on a Bear Hunt again!

**Katie Hawkrige**



## SKIPPERS HILL PREPARATORY SCHOOL

Our Formula 1 Club, run by Mr. Young, has been preparing for 2 terms for the South Eastern region finals at Canterbury Christ Church University. They designed and engineered their own car, raced it against other schools and presented their research. Despite it being their first entrance to the competition, the group achieved the 'Judges Choice' award. A huge well done to all those involved. The group has already begun designing their new car and can't wait to improve their times!

**Phillip Makhoul**



Last year's award winning poet Holly Hopkins visited the School for our annual Poetry Day



### **MAYFIELD GIRLS SCHOOL**

We wanted to share some poetry with you, created by our Year 9 students. At Mayfield Girls, we like to bring out the writer in every girl and help them to become better critical readers through creative responses. These poems are examples of everyday creativity that help us to express ourselves and to think well in all parts of life.

#### **Ode To A Watermelon**

The first bite of the season  
The crisp crunch as you indulge  
Like a flower blooming  
As if you are tasting summer.

Dalmatian spots dispersed throughout a  
vermillion maze  
A juniper armour guards the flesh  
Hiding delights within.

Eye-catching amongst the array of fruits  
A bold scent like no other  
The perfect recipe, a balance of sweetness  
and freshness.

The thirst-quenching fruitiness  
Like a balm for the body in the heat of  
summer.

**By Lucie**

#### **Ode To A Dragon Fruit**

Descending from your barbed enclosure  
Unlocked  
At twilight's company  
with an aroma of floral brilliance  
Engulfed in your sweet smelling  
Tropical aura.

Exquisite vision,  
Opened onto a gradient of rose and  
unpigmented porcelain  
Freckled with inky speckles

Unique specimen  
Unlike any other  
Confined in your scaled room  
But inside  
An array of undiscovered beauty  
Unharmd.

**By India**



### **Ode To A Strawberry**

As a knife touches your delicate skin  
It reveals a burst of flavours  
Love's own fruit  
Is best chocolate-dipped  
Your golden freckles could  
Brighten anyone's day.  
Red as blood  
Yet sweeter than sugar  
Softly ripe  
Diminutive scarlet  
The prettiest wild.  
Large and luscious  
Best when just  
Just picked  
Delectable  
when with its  
pair, cream.  
Shaped like a heart  
Stream of fragrances.

**By Udochi**

### **Silence**

A vast blanket of blue  
Empty, but not alone  
Never alone  
.....Just Floating  
Lost in thought  
With the water keeping things afloat  
And the waves swallowing them whole  
Below  
Deep below  
It doesn't feel real to be honest  
Is it actually real?  
Surrounded by nothing but dancing  
currents  
And coral reefs as bright and radiant as  
cities at midnight  
The sea sings out to many  
It's peaceful  
Yet thrives  
From the whales' sounding song  
To the small ripples on the shore  
But destruction  
It's all starting to fall apart

Sea levels rising  
Hope falling  
Doesn't anyone care  
70% of the earth is water  
70% of the human body is water  
We really should care  
From the whales' sounding song  
To the small ripples on the shore  
The sea sings out to many.

**By Lily**

### **Ode To My Friends**

Ode to my friends, Who made me realise,  
That life could be good. Even in this world,  
That is, Dying.  
Because of us.  
Who if I fell, would help me up.  
Even if I fell so. Far. Down. they almost fell  
too.  
What was lost would be found.  
What was sad would be made happy.  
My light of sadness would be replaced,  
By a glimmer,  
Of hope. My clouded vision would be  
cleared,  
By my friends,  
Who keep me going.  
My reason to get changed. My reason to  
wake up,  
Every morning, To see them.  
Who would give me spoons when I had  
none left.  
my friends, who I cannot replace.  
I cannot define. I cannot leave these  
friends.  
For these friends are friends,  
That I love. A love that is not fraternal,  
But a caring love. A love that is always  
there,  
Even through arguments. You see now?  
My friends.  
Are.  
Love.

**By Anonymous**

## The Addams Family

Residents of Mayfield and Five Ashes are warmly invited to attend Mayfield School's production of The Addams Family

**School Edition on 1st and 2nd February, at the Trinity Theatre in Tunbridge Wells.**

Tickets are £14, with £12 concessions.

## Against Breast Cancer Bra Bank

If you are having a New Year clear out and have any old or unwanted bras, please donate them to our Bra Bank in order to help raise funds for Against Breast Cancer. Simply drop off any unwanted bras at Mayfield Girls School reception.

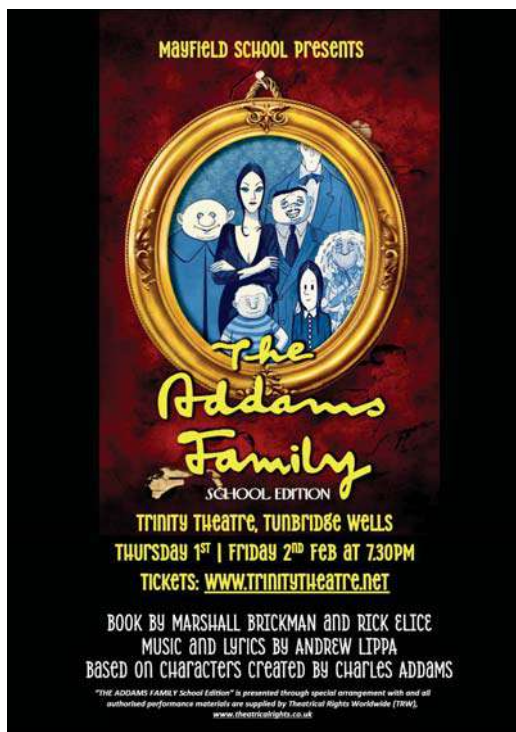
Against Breast Cancer's bra recycling scheme takes your unwanted bras and through their network of bra banks raises vital funds for pioneering breast cancer research. For every tonne of bras collected, Against Breast Cancer receives £700 to fund their research.

## Join us for our next Open Morning

**Friday, 2<sup>nd</sup> February 10.00am - 12.30pm**

**Friday, 15<sup>th</sup> March - 10.00am - 12.30pm**

At the Open Mornings you will hear from our Head and Head Girls, as well as have the opportunity to ask our teachers any questions about life at Mayfield. You will also be able to take a tour of the School.



## Want to find out more about Mayfield?

Join our next Open Morning  
Friday 2 February

[www.mayfieldgirls.org/open-mornings](http://www.mayfieldgirls.org/open-mornings)



# OUR CHURCHES

## 2PM FRIDAY 1<sup>ST</sup> MARCH WORLD DAY OF PRAYER - A SERVICE FOR EVERYONE PREPARED BY THE CHRISTIAN WOMEN OF PALESTINE

The Christian Women of Palestine are calling us to connect with the land from where Jesus came; where he was born, ministered and died – and from where our faith began and is rooted. Despite living in an area of the world where there is ongoing conflict and the future is uncertain, the women of Palestine are sharing with love a reminder that they are there, and they want to give hope to everyone. The theme of the service **'BEAR WITH ONE ANOTHER IN LOVE'** seems very appropriate for these women who will not give up witnessing the love of Jesus Christ.

World Day of Prayer is an international, inter-church organisation which enables us to hear the thoughts of women from all parts of the world: their hopes, concerns and prayers. It is celebrated in over 146 countries beginning in Samoa. Prayer, in native languages, then travels throughout the world --- through Asia, Africa, the Middle East, Europe and the Americas before finishing in American Samoa some 38 hours later.

This will be a wonderful opportunity for our Churches to come together and this year will be hosted by St. Dunstan's. Do come and join us! After the Service, tea and cakes will be served.

For further information: <https://www.wwdp.org.uk/2024>

## ST. DUNSTAN'S

We will be holding our annual **Lenten Lunches** again this year – from 12noon until 2pm – in London House in aid of the following charities: Friends of the Holy Land, Family Support Work, Hospice in the Weald, MAYFACS and Friends of St. Dunstan's. The lunches all take place on a Thursday and the dates are: 22<sup>nd</sup> February, 29<sup>th</sup> February, 7<sup>th</sup> March, 14<sup>th</sup> March and 21<sup>st</sup> March.

At the moment we are not sure which charity will be supported on which date but please keep an eye on our website and on our noticeboard in Church as we will advertise them as soon as they are arranged.

Our Ash Wednesday Services will be held on Wednesday, 14<sup>th</sup> February at 10am and 7.30pm and you are most welcome to join us. During the Sundays of Lent, St. Dunstan's will be thinking about some of the people involved in Jesus' death – St Peter, Judas Iscariot, Joseph of Arimathea,



St Mary, and Pontius Pilate. We are also offering a 'Lent Challenge' asking people to do something different from usual each day of Lent; some are spiritual (reading part of the Bible), others are community focused (be it recycle something new, go for a walk, call on a neighbour). You can take part too by picking up a leaflet from the back of the church.

**Our Organ Trust** is very pleased to announce the forthcoming Organ Plus concerts on Saturday, 3<sup>rd</sup> February and Saturday, 2<sup>nd</sup> March. Doors open in St. Dunstan's at 5.30pm (with a cash bar) and they both begin at 6pm. Tickets are £15 (Students free) and can be obtained either on the door, at Sew Inspired in the High Street, or online at [www.ticketsource.co.uk/st-dunstans-mayfield-organ-trust](http://www.ticketsource.co.uk/st-dunstans-mayfield-organ-trust).

The concert on 3<sup>rd</sup> February features Gerard Brooks on Organ, with Patsy Gamble on Saxophone. Gerard is a Professor of Organ at the Royal Academy of Music and is a tutor for the Royal College of Organists Academy. As a solo artist he has performed in major venues across Europe. Patsy Gamble has recorded all over the world with major artists including Mick Jagger, Paul Weller and Ruby Turner. This is a very exciting opportunity to hear Gerard and Patsy playing a variety of pieces, including two new compositions.

The concert on 2<sup>nd</sup> March again features Gerard Brooks on Organ with Richard Deacon on trumpet. There will be a variety of works played including some by Fantini, Hovhanness, Peeters, Stanley, Torelli, Purcell and Bach. We do hope you can join us at either or both of these concerts.

**And a reminder**, St. Dunstan's church is open every day from 9am to 4pm for everybody. Why not pop in sometime? To

pray for someone, to light a candle for them, to sit quietly or even to have a walk around.

**Nicky Higgins Parish Administrator** St. Dunstan's Parish Office London House, High Street, Mayfield, TN20 6AQ – 873484 - Email:[office.stdunstans@gmail.com](mailto:office.stdunstans@gmail.com)

**The Office opening hours are Monday, Wednesday and Friday – 9am until 1pm.**

To Conform with GDPR, all personal details are kept securely and not shared with any other person or organisation without your consent. We will not mail shot you or send any info that does not relate to St Dunstan's Church, Mayfield.

## **ST. THOMAS OF CANTERBURY**

We, at St Thomas', are looking forward to two Churches Together events in the coming months, so make sure you put both these in your diary.

Firstly, 'The World Day of Prayer' at 2.00pm on Friday, 1<sup>st</sup> March. This year the service will be at St. Dunstan's Church and it has been prepared by the Christian Women of Palestine.

Secondly, on Palm Sunday, 24<sup>th</sup> March at 2.30pm Wateryard Theatre Group with The Churches Together are putting on a Passion Play. This community event is one not to be missed.

## **Masses at St. Thomas' during February**

6.00pm Saturday 3 February  
10.00am Sunday 11 February  
6.00pm Saturday 17 February  
10.00am Sunday 25 February

You are welcome to join us and please stay for coffee after the Sunday Mass.

For further information please see the parish website.

[www.stthomasmayfield.org.uk](http://www.stthomasmayfield.org.uk)

**Mary Brentnall**



# ROUND AND ABOUT THE VILLAGES

## ST. DUNSTAN'S CHURCH ORGAN TRUST

St. Dunstan's Church Organ Trust are putting on another of their successful Organ Plus Concerts on 3<sup>rd</sup> February at 6pm. Organ Plus denotes the addition of another musician to accompany the organ thus making the experience more varied. This concert features renowned organist Gerard Brooks, Director of Music at Methodist Central Hall, Westminster. Gerard is a Professor of Organ at the Royal Academy of Music and also teaches at Sevenoaks School and is a tutor for the Royal College of Organists Academy. As a solo artist he has performed in many major venues across Europe, from Notre Dame in Paris to the Royal Festival Hall. Performing with him and much in demand is Saxophonist Patsy Gamble. Patsy has recorded all over the world with artists including Steve Winwood, Mick Jagger, Paul Weller & Suggs, Mick Taylor, Mike D'Abo, Chris Farlowe, Ruby Turner, and The Firebirds. She has supported artists such as John Mayall, Peter Green, The Gypsy Kings, Gloria Gaynor and Sister Sledge.

This is an exciting opportunity to hear Gerard and Patsy at St. Dunstan's on 3<sup>rd</sup> February. Some of the pieces will be readily recognisable (Morricone, (Gabriel's Oboe), Giazotto, (Adagio on a theme by Albinoni) and Elgar, (Salut d'Amour), but there will also be two newly composed items based on the theme of remembrance. Gerard's composition is especially poignant as it remembers the untimely death of a friend who, as a front-line health worker, was inadequately protected from Covid. He died at the age



of 52. Gerard's piece has 52 variations over a recurring theme.

Doors open at 5.30pm, with the concert beginning at 6pm. There will be a licensed bar.

Tickets are £15, with Students free, and can be obtained, on the door, at Sew Inspired, or online at

[www.ticketsource.co.uk/st-dunstans-mayfield-organ-trust](http://www.ticketsource.co.uk/st-dunstans-mayfield-organ-trust).

## MAYFIELD COMMUNITY & HEALTH CENTRE

Despite the Christmas break there has been much on-going activity with key milestones becoming tantalisingly close. We are updating our original design brief to ensure it meets with the potential hall

users' requirements and those of Wealden District Council (WDC) Planning Department. We are also appointing a new firm of architects, which will be provided with the updated Design Brief shortly.

The main project activity will be a two-stage Design and Build contract and the legal work is underway to finalise the various legal contractual documentation, commencing with the Design Contract, which is expected to be placed within a few weeks.

The overall timeline suggests that our target of completion by December 2025 is still on track, subject, of course, to completion of the final Contract.

The Parish Council has commissioned an independent Quantity Surveyor to analyse the quotes that we have received from the contractors bidding for the Building Contract. In doing so, we can be assured of achieving the best value for money possible and know that we are proceeding in a justifiable manner.

With improved clarity as to timelines and individual costs, we have been able to finesse the cash flow projections, which suggest that the project still continues to be financially viable. In addition, we have been actively pursuing several grants from third parties. We are delighted to advise that we have been successful in being awarded a substantial grant, the details of which are currently being finalised. Confirmation of this will follow in the next month or so. Other grant applications are in the pipeline, all of which should provide some contingency support, as well as ensuring the Design Brief can be achieved. February is likely to be a key month and there should be a lot of good news to report in the monthly update in March.

Further information will also be available on the village Facebook site and the Mayfield and Five Ashes Parish Council

website [www.mayfieldfiveashes.org.uk](http://www.mayfieldfiveashes.org.uk), as it becomes available.

## THE MAYFIELDIANS' PHOTO OF THE MONTH COMPETITION

This winning photograph for December was taken by the Newsletter's very own Photo Editor, Julie Salwey. Congratulations Julie. We are now inviting entries for January and February. All entries should be in as high a resolution as possible, ideally 1mb file size minimum. All photographs must be landscape, be of an identifiable location in Mayfield or Five Ashes and be representative of each particular month and ideally sent to

[mayfieldians@gmail.com](mailto:mayfieldians@gmail.com) or posted on the village FaceBook pages and Mayfield In A Frame. Wellbrook Wines have very kindly agreed to donate a bottle of wine each month to the winner of the competition. A substitute prize can also be offered if wine is not an appropriate option.



## THE MAYFIELD MEDIEVAL FILM

We are keenly anticipating our **medieval feast** in Mayfield School Chapel on the afternoon/evening of **Sunday, 11<sup>th</sup> February**. If you wish to take part in this celebratory meal, in full medieval splendour, please email **medievalmayfield@gmail.com**

## WATERYARD THEATRE GROUP

The Churches of Mayfield with Wateryard Theatre Group are planning The Mayfield Passion Play, to be performed along the High Street of our historic village on Palm Sunday, 24<sup>th</sup> March.

We need lots of people to help make this exciting project happen. We are looking for 12 'team players' (perhaps members of a local sports team or drama group) to play the Disciples! There would be a few lines for some to learn but plenty of action and help with shepherding our audience along the High Street and back. It won't involve lots of rehearsals, hopefully just 2 or 3 energetic meet-ups in February and March.

If you'd like to take part as a 'team player' or by singing, being an extra or a steward or helping with costumes or props, get in touch. Let us know what you are interested in by contacting our secretary, Diana Forrest, by email: [bolfor@btinternet.com](mailto:bolfor@btinternet.com)

## FILM ON FRIDAY

**Five Ashes Village Hall. Doors and licensed bar open 7.45pm, film starts 8.15pm.**

### IN THE MOOD FOR LOVE – 9<sup>th</sup> February

Close to Valentine's Day we will show the classic film that is Hong Kong's *Brief Encounter*. Two neighbours grow close when they realise their respective partners are having an affair. Will they? Won't they?



Janus Films

A deeply romantic, moody production with atmospheric use of colour and passionate music.

### ONE FINE MORNING – 23<sup>rd</sup> February

The new feature from Mia Hansen-Løve, whose films we have shown before, continues her themes of sadness and happiness combining in everyday lives. A young widow, with an eight-year-old daughter who is struggling to cope with her father's degenerative disease, embarks on an affair with an old friend.

Our programme is available from The Post Office, The House Café, the MAYFACS office and our poster on the school railings. Trailers for all our films are on our website, [www.filmonfriday.org](http://www.filmonfriday.org), together with interviews with the directors and cast. For more details [filmonfriday@gmail.com](mailto:filmonfriday@gmail.com) or tel 837310:

**Andrew Ratcliffe Chairman**



MUBI

## MAYFIELD HORTICULTURAL SOCIETY

### Seed Swap and Social – Saturday, 3<sup>rd</sup> February

By the time most of you read this, we will have held our inaugural Seed Swap and Social event at the Scout Hall and we will have welcomed a lot of you there. We hope that if successful, this will become a popular annual event for all members of the wider community. Have a good natter over a hot drink and homemade cake, introduce more people, both young and old, to the joy of growing their own plants from seed, swap seed and pick up some seed of tried and tested varieties of vegetables and flowers. Spread the word that Mayfield Horticultural Society is here to help you make your gardens and allotments grow!

If you are reading this on 1<sup>st</sup> or 2<sup>nd</sup> February, however, please come along to the Scout Hall between 10am and 12.30 and find out what it's all about! FREE entry to all, you don't have to be a member to join in.

### Next Talk – Friday, 16<sup>th</sup> February At 7.30pm Via Zoom 'Modern Ways Of Growing Vegetables'

Our upcoming Zoom talk from very experienced vegetable grower Ray Broughton is a very timely prod to think about which vegetables you will grow this year and maybe glean some tips on different ways of growing vegetables for success in your garden or allotment.

It is aimed at both the inexperienced and experienced gardener and discusses modern ways of growing vegetables with a slant towards organic growing. The use of fertilisers to gain maximum benefit will also be covered. There will be an opportunity to ask questions. This talk is open to all in the community. Current members will automatically receive a link for the meeting by email a few days prior to the event, non-members need to pay £5 to receive the link. Please email [chair@mayfieldhorticulturalsociety.org.uk](mailto:chair@mayfieldhorticulturalsociety.org.uk) if you are a non-member and would like to join this very informative talk.

### Future Dates For Your Diary

**Tuesday, 19<sup>th</sup> March** - AGM, Colkins Mill Church, doors open at 7pm, plus a talk from How's Green Nursery, Growing for the Chelsea Flower Show

**Saturday, 11<sup>th</sup> May** - Annual Plant Sale, Memorial Hall car park (tbc) 9.00-11.00

**Tessa Crowe**

[www.mayfieldhorticulturalsociety.org.uk](http://www.mayfieldhorticulturalsociety.org.uk)

[chair@mayfieldhorticulturalsociety.org.uk](mailto:chair@mayfieldhorticulturalsociety.org.uk)



### MAYFIELD EVENING W.I.

At our January meeting we were given a very lively and animated illustrated talk by Fr. Michael Asquith, not on any ecclesiastical matter but on the joys and hazards of



narrowboat sailing. His sheer enthusiasm and delight in travelling at 4mph, or even more slowly, was most evident.

Every year we support a particular charity and this year we have chosen to raise funds for the proposed Hospice in the Weald children's day centre at the Cottage Hospice site in Five Ashes.

The W.I. is a unique organisation which is shaped by its members, connecting, supporting and empowering all women of all generations. Joining the W.I. offers an amazing range of opportunities for making friends, sharing and learning new skills and creating real changes on issues that matter to us and our communities.

The Mayfield branch meets every second Tuesday of the month (apart from August) at 7.15pm for 7.30pm at Colkins Mill Church, just at the end of the High Street.

**Our February meeting (Tuesday 13<sup>th</sup>) will feature a talk by Donna Lane, Colour Image Consultant.**

Please feel free to pop in at one of our evenings and meet us all. For any further information, please contact **Chrissie Robinson on 862825**

## **MAYFIELD LOCAL HISTORY SOCIETY**

Full programme can be found on the society website at <http://www.mayfieldlhs.org.uk>)

### **Friday, 23<sup>rd</sup> February - Hearth and Home - Sussex Vernacular Architecture.**

Dr Geoffrey Mead will be looking at the sources of Sussex building materials both local and imported. The geology of the County has dictated the vernacular styles, from Wealden sandstone to coastal cobbles, while the long coastline, accessible rivers and creeks plus the proximity to the continent saw imported materials in many of the coastal communities.

**Brian O'Connor, Chair 873477; Gill Marengi, Secretary; John Buddle, Treasurer 872229**

## **MAYFIELD AND DISTRICT U3A**

In December our U3A members feasted in festive manner with a delicious lunch, catered as ever by the talented Sue Wright, and in January we were treated to a magical afternoon with Bertie Pierce, a member of the Inner Magic Circle, with Gold Star. These were, in different ways, both memorable occasions.

Our February speaker is Michael Blencowe, a naturalist, writer and wildlife guide who lives in Sussex with, and I hope we're told more about this, a stuffed Hawfinch. Michael has always been passionate about nature and conservation and while he has travelled widely around the world, he has particular experience of the wildlife and amazing diversity of habitats of his and our native County.

A proud winner of the 'Lewes Personality of the Year' in 2012, he has broadcast on Springwatch and Countryfile, and has talked about herbalism on a Harry Potter documentary.

With the broad title of 'Wildlife', who knows where his talk will take us?

Come to Five Ashes Village Hall on **February 15<sup>th</sup> at 2pm** to find out. The talk is free to our members, but it is also open to anyone else who'd like to join us, for the small fee of £2.00.

## **MAYFIELD BAND**

The carol books are away now and out come the foot tappers in readiness for the summer season. The Mayfair will be back, and together with a "staff" wedding, and the big fair at Eridge Park, the diary is already filling up and there is lots to do. We may have to call on the wider banding family to help us out, as we still have an empty euphonium seat, and now an empty baritone horn seat as well, as our young baritone player Alex has switched to bass. Incidentally, this highlights the fact that all our valve instruments, in other words everything except the trombones, have the same fingering, making it possible to switch instruments relatively easily. So should you suddenly have an epiphany, and we find you desperately banging on our door on Friday night demanding to take up the cornet, and you then find it not to your liking, we can switch you to something more agreeable. The whole concept of a brass band is that we work together to produce a cohesive sound, a little like an organ, but that does tend to disguise the fact that our instruments are actually all quite different, with different pitches, timbres, and textures, and they all have very different roles in the band. So don't think of us as just "brass" because we are so much more than that, with ten different instruments plus percussion in a full band. Something for everyone. A treasure trove of musical delights! And speaking of musical delights, we are planning a massed band concert this

spring/summer with our friends from Lingfield Band, so watch this space.

## **Mayfield Youth Band**

The organised chaos has resumed following the Christmas break. It was delightful to have everyone back for a very full and noisy first session of the year. Fifteen of them in total, including one adult, all having a lot of fun. All we have to do now is translate that fun into music! Don't forget that beginners of any age are always very welcome, and we will start you off in a separate session, so you needn't worry that you will be plunged straight into an experienced group and expected to play. We have instruments available for you, and all you have to do is take that first step and give me a call.

**Simon Rudge**

**872007 - [simon@mayfieldband.co.uk](mailto:simon@mayfieldband.co.uk)**

**ROYAL BRITISH LEGION -  
MAYFIELD, FIVE ASHES  
AND HADLOW DOWN**



## **Next Branch Meeting Wednesday, 20<sup>th</sup> March at Mayfield Cricket Club**

– our speaker is Squadron Leader Nick Clark RAF. Nick is a logistics officer and air mobility specialist and his talk is entitled 'The Logistics of Leaving Afghanistan'. As he was literally on the spot at this time his talk promises to offer something very special and should not be missed.

Licensed bar facilities will be available from 6.30pm. and the meeting commences at 7.00pm.

There will be a brief session of branch business at 7.00pm, followed by a fish and chip supper (or chicken or scampi) at a cost of £8.00. If you would like to join us, you will be warmly welcomed. There is no fee for guests' attendance and we would

dearly love to see new faces at this branch meeting. I think you would enjoy the evening in convivial surroundings with bar, speaker and pre-ordered supper.

### **Other Dates for your Diary**

#### **Branch Meetings:**

Wednesday, 5<sup>th</sup> June

Wednesday, 23<sup>rd</sup> October, incorporating the Annual General Meeting

### **Summer Garden Party**

Following the success of our first garden party last July we are repeating this event on Sunday, 7<sup>th</sup> July. We will have musical entertainment again at this event. Now we have a track record it is clear this event will be popular and early booking will be essential. Please note the date in your diary and full details will be available the nearer event.

### **2023 Poppy Appeal Update**

We are now pleased to give a final figure for the total funds raised in 2023 for the Poppy Appeal. Inclusive of the electronic collection made in addition to the handheld card swipe machines, it is £4,524.53. A result unachievable without our fantastic team of door-to-door collectors and everyone else whose efforts contributed in many other ways.

**Kevin Swaine 872197 / 07970 787465 - [kevinswaine@btinternet.com](mailto:kevinswaine@btinternet.com)**

### **FRIENDS OF ST. DUNSTAN'S GARDEN PARTY – SAVE THE DATE**

Planning ahead, the Friends of St. Dunstan's Garden Party will be held on **Sunday, 14<sup>th</sup> July** at **Clayton's Farmhouse, Newick Lane**, from 12 noon to 2pm by kind permission of Mr. and Mrs. Richard Nabavi. Everyone is welcome. Let's hope the weather is lovely.

All the proceeds from this event will go to raising funds for the preservation and maintenance of the church building. Come and enjoy a lovely walk around the garden and help ensure the church remains in good repair for everyone in the village to appreciate.

**Annette Nabavi Chair, Friends of St. Dunstan's Parish Church, Mayfield - 873476.**

### **MAYFIELD GOLFING SOCIETY**

The first outing of 2024 was at Lewes Golf Club with eighteen hardy souls braving the elements. Chosen for its fast-draining chalk soil, the course delivered an excellent day of full sun and hardly any wind to go with a dry course. Mind you, the car temperature on the way there dropped to -6 C and we were slightly concerned that we would encounter Antarctic conditions on a frozen wasteland with golf balls bouncing erratically all over the place. Four layers of clothes, Shackleton-esque beards, even an electric coat meant we were well prepared. We needn't have worried. The sun gradually warmed things up, and the scoring was one of the best in recent memory. There were 3 individual scores in the 40s, with Rob Montagu winning with a staggering 46 points (including one blob). Rob has been advised to book himself in for a general anaesthetic because the handicap surgery is going to be painful! Rob was unsurprisingly part of the winning team along with Graham Smith and Rob Weavers. Their 97 points was well clear of everyone else.

A good time was had by everyone. Our next meeting is at Eastbourne Downs on 19<sup>th</sup> February. See [mayfieldgolfingsociety.com](http://mayfieldgolfingsociety.com) for details.

## **NEWS FROM NUS GHANI – MP FOR WEALDEN**

Winter is truly underway in Wealden and with periods of very low temperatures such as the ones we've seen last month, it is even more important to look after our health and to check in on vulnerable family members, friends and neighbours.

The Crowborough and Uckfield Minor Injuries Units are key services for Wealden residents, helping to relieve the pressure on A&E departments in nearby hospitals. I'm grateful for the continued work of Friends of Crowborough Hospital and the League of Friends of Uckfield Community Hospital for their ongoing support for these valued community assets. In addition to our existing services, we had some fantastic news for Mayfield just before Christmas. I was delighted to support Mayfield and Five Ashes Parish Council in making representations to the Department for Levelling Up, Housing & Communities and I'm thrilled that we secured £297,000 from the Community Ownership Fund. This boost in funding is a fantastic win for the communities of Mayfield and Five Ashes and will help deliver the new combined Community Hall and Health Centre in Mayfield, replacing the existing Memorial Hall, which is beyond repair or refurbishment and cannot be made suitable for long-term use. This much-needed asset will make a huge difference in the provision of medical services in Wealden and ensure G.P. practice teams can deliver a higher quality of healthcare for local residents. Moreover, it will also bring enormous benefits as a multi-purpose social hub, improving opportunities for fitness and social activities.

I also continue supporting our G.P. services. Appointments for the free NHS flu vaccine continue to be available throughout Wealden, so please book an appointment if you are eligible and at higher risk of getting seriously ill.

## **NEWS FROM FIVE ASHES**

### **FIVE ASHES HORTICULTURAL SOCIETY**

Our Society year is now well underway with the holding of our first Committee Meeting at which we agreed on changes to the 2024 Schedule. Our Spring Show is to be held on 23<sup>rd</sup> March which means we will have to get our skates on (not literally I hope) to get the Schedule ready for the printers, printed, and delivered, in time for the Show.

One piece of sad news, reported at the meeting, is that Steven Moore of Rapkyns Nursery has died after a long illness. We will miss him and his smile very much.

**Graham Playfoot 01825 830511**

### **HOSPICE IN THE WEALD**

#### **Cottage Hospice Open Day**

Come and have a look! Cottage Hospice in Five Ashes is opening its doors to members of the local community on Thursday, 29<sup>th</sup> February. Whether you are interested in volunteering or working with the Hospice, have a relative who may benefit from free Hospice care, or are a carer yourself, the friendly team will be on hand to welcome you. Find out more about all that is on offer at Hospice in the Weald's beautifully designed building, including Living Well activities, by popping in for a cup of tea or coffee and a slice of cake from 10.30am -12.30pm. No need to book, just come along on the day.



## Volunteers Needed For Hospice Charity Shops

If you have a few hours to spare, enjoy meeting new people and serving customers, then Hospice in the Weald would love to hear from you.

The Hospice has 30 charity shops, including one in Mayfield, a new store in Heathfield, and a furniture barn in Five Ashes.

We would love to hear from anyone interested in joining our friendly team of retail volunteers who support shop managers in the smooth running of each store.

Typical duties include providing excellent customer service, assisting with window displays, processing Gift Aid donations, stock control and cash handling.

You do not need previous retail experience as full training is provided. All you need is a positive, cheerful outlook and you must be over 18 years of age.

You will be helping to generate vital funds so that Hospice in the Weald can offer care and support to all those in our community facing terminal illness.

**Please contact Emily Miles on 01892 820550 or email**

[emily.miles@hospiceintheweald.org.uk](mailto:emily.miles@hospiceintheweald.org.uk) if you would like to find out more.

**Sue Massey** Communications & PR Manager - (Mon -Thurs) **Mob: 07563 382427**



## WADHURST WINDOW

### WADHURST AND DISTRICT FLOWER CLUB (NAFAS)

The Flower Club 2024 Year will be kick started on February 1<sup>st</sup> when the 51<sup>st</sup> Annual General Meeting is to be held, followed by a very social Afternoon Tea. All members present will, no doubt, be eager to exchange New Year greetings and discuss the programme of demonstrations that has been arranged for the year.

Wadhurst Flower Club welcomes new members and guests to all meetings and would be delighted to meet YOU!

The Club holds 10 meetings per year, these include demonstrations by inspiring floral designers, workshops, afternoon tea following the AGM and September meeting, plus 2 special occasions when lunch is served before the demonstration.

All meetings are held monthly at 1.45pm in Stonegate Village Hall. Annual Membership costs £45.00, there is a monthly charge of £3.00 to cover refreshments. All floral arrangements produced by the demonstrator become raffle prizes for six or more lucky winners. Why not come and see for yourself what joy and fun flowers can bring to your life. For more information, please contact **Sonia 01892 785672 or Debbie 882851.**



**NOTE FROM THE EDITORS:** We include reports from the Wadhurst And District Flower Club in our Mayfield & Five Ashes Newsletter as it is now the nearest Flower Club (NAFAS) to our villages. It has quite a few members from Mayfield & Five Ashes so if you need a lift this will probably be possible.



#### PUBLIC OPENING TIMES

Monday	09.00 – 11.00
Wednesday	09.00 – 12.00
Friday	09.00 – 11.00

#### OFFICE ADDRESS

**Mayfield & Five Ashes Parish Council**

Old Manor House, High Street,  
Mayfield TN20 6AL

T 01435 873784

F 01435 873726

E clerk@mayfieldfiveashes.org.uk

W www.mayfieldfiveashes.org.uk



## Councillor contact details

#### Paul Amans

T 01435 872106

E paul.amans@mayfieldfiveashes.org.uk

#### Tommy Buck

T 07718 787748

E tommy.buck@mayfieldfiveashes.org.uk

#### Howard Blakebrough

T 07850 869881

E howard.blakebrough@mayfieldfiveashes.org.uk

#### Andrew Burnett

T 07919 002139

E andrew.burnett@mayfieldfiveashes.org.uk

#### Chris Dines

T 07557 238738

E chris.dines@mayfieldfiveashes.org.uk

#### Jo Eates

T 07876 032656

E jo.eates@mayfieldfiveashes.org.uk

#### Paul Jarvis

T 07730 382482

E paul.jarvis@mayfieldfiveashes.org.uk

#### Martin Lawson

T 07776 137557

E martin.lawson@mayfieldfiveashes.org.uk

#### Chris Lilly

T 01435 873631

E chris.lilly@mayfieldfiveashes.org.uk

#### Joel Marlow

T 07969 078643

E joel.marlow@mayfieldfiveashes.org.uk

#### Ian Parker

T 07971979137

E ian.parker@mayfieldfiveashes.org.uk

#### Andrew Ratcliffe

T 01435 873310

E andrew.ratcliffe@mayfieldfiveashes.org.uk

#### Raj Sharma

T 07532 003174

E raj.sharma@mayfieldfiveashes.org.uk

#### Sally-Ann Tibbles

T 01435 872469

E sally-ann.tibbles@mayfieldfiveashes.org.uk

#### Rodney Warren

T 07860 628844

E rodney.warren@mayfieldfiveashes.org.uk

[www.mayfieldfiveashes.org.uk](http://www.mayfieldfiveashes.org.uk)

# PARISH COUNCIL NEWS

January is a quiet month for the Parish Council (PC) as there is no scheduled monthly meeting. However, there is news from December 2023 to report.

We welcome our new Councillor, by the residents of Five Ashes and very much look forward to

At the December 2023 Council was made to raise the precept resulted in increased costs for expenditure and an increase in costs.



Rodney Warren, who was elected Ward on 14<sup>th</sup> December 2023 working with him.

meeting, the difficult decision for 2024/25. Inflation has day-to-day general operations reserves is required for election

The cost of the contested election in May 2023, split between Wealden District Council (WDC) and the PC, was more than £9,000. The by-election for a Councillor to represent Five Ashes Ward in December 2023 has been estimated by WDC as £2,600 for 554 residents. No costs for a by-election are shared with WDC. There is a risk that when casual vacancies arise in the future, 10 or more residents may request a formal election and this will trigger another by-election if there is more than one applicant. Any by-election for Mayfield Ward (with 2,140 residents) will cost in excess of £10k.

It was therefore resolved to increase the 2024/25 budget in respect of general operations from £107,089 to £112,444, an increase of £5,355. This is the first rise in precept towards day-to-day expenditure since the 2017/18 financial year. Please note that there was no increase in budget or precept required for the Mayfield Community Centre project. The **annual** increase in Parish Council for each Council Tax Band is outlined in the table below.

Parish Council Tax Increase 2024/25								
Band	A	B	C	D	E	F	G	H
Annual Increase	£1.22	£1.42	£1.63	£1.83	£2.24	£2.64	£3.05	£3.66

(Remember the annual increase for each band will be split between 10 monthly payments.)

## Temporary Road Closure Warnings

Having been informed of scheduled road surface improvement works in Mayfield High Street and Station Road in January, it is extremely disappointing that the work was not carried out. Furthermore, at the time of writing this article, no explanation for the cancelled or postponed works had been provided from East Sussex Highways. Hopefully new dates will be arranged as soon as possible as the potholes in the High Street are worsening – this has been reported to Highways.

West Street is scheduled to be closed for 10 days from Monday, 29<sup>th</sup> January for drainage works to help alleviate flooding to the carriageway and private property. The road will be closed to through traffic between Ashley Gardens and the entrance to 'Cranesden' from 9am to 4pm.

Coggins Mill Lane is scheduled to be closed on 16<sup>th</sup> February from the junction with Lake Street to the junction with Fletching Street to allow BT Openreach to carry out further works at this location.

Lake Street, Mark Cross

Lake Street will be closed from the junction with the A267 to the junction with Tidebrook Road, a distance of approximately 2850 metres. The restriction is anticipated to be in place between 17<sup>th</sup> February to 1<sup>st</sup> March. A safe route will be provided for pedestrians and vehicular access for residents and to properties maintained whenever possible with an alternative route for through traffic signed and maintained for the duration of the works via the A267 Mayfield Road – B2100 Wadhurst Road - Best Beech Hill – Tidebrook Road and vice versa.

### **Fund Offers Boost To Rural Businesses**

Rural businesses could benefit from match-funded grants of up to £50,000 to help create jobs increase productivity and adopt new technology. Rother and Wealden District Councils will be using money from their Rural England Prosperity Fund to support a range of businesses, with a £500,000 pot for Wealden and a £300,000 pot for Rother.

Small and medium businesses can apply for financial support for projects including the purchase of equipment and machinery, adaptation of premises, the creation or expansion of rural leisure and tourism

businesses and farm diversification outside of agriculture.

Match-funded grants of between £2,500 and £50,000 will be available in communities with a population of under 30,000 and both councils are keen to see non-agricultural applications which will help businesses grow or diversify. The fund closes on December 31<sup>st</sup> 2024, or when all funds are allocated. More information about the grant scheme and details of how to apply can be found at [www.eastsussex.gov.uk/business/support/grants/ruralbusinessgrants](http://www.eastsussex.gov.uk/business/support/grants/ruralbusinessgrants)

### **Transition Of Landline Phone Technology From Analogue To Digital**

The landline is here to stay but the technology used to make calls is changing from analogue to digital as part of an industry-wide shift. It aims to address the increasing unreliability of the decades-old analogue network.

BT is rolling out its new home phone service, Digital Voice, on a region-by-region basis. For most customers, it will be as simple as plugging their existing home phone into the back of their broadband router rather than the socket on the wall. The new digital service provides clearer call quality and will prevent most scam calls. By December 2025, most calls are expected to be made over broadband.

As well as charities and community groups, they are also working with the Government, Ofcom and local authorities to ensure customers get the help they need to make the switch. Additional support and services are available, including the ability for customers to nominate a family member, friend, or carer who will receive all the information about switching on their behalf. Also, when



customers with additional needs start to make the switch, they will automatically receive equipment and an engineer appointment.

For peace of mind in the event of a temporary power cut, BT will provide additional resilience to those who need it most. Free battery backup units are available for customers with additional needs and/or who live in an area without a mobile signal, and the units provide at least one hour's talk time. For customers without a mobile phone with access to a 4G signal, a hybrid phone that can switch to a mobile network and has an in-built battery is available. Customers without additional needs can purchase a battery backup unit or a hybrid phone.

The very small percentage of the population without access to broadband or decent mobile coverage will continue to use their service the same way they do today. BT will ensure these customers have the connectivity they need and will contact them when they can move to Digital Voice or an alternative service. You can visit <https://www.bt.com/broadband/digital-voice/> to find out more.

### **Violence Against Women And Girls**

Sussex Police is dedicated to tackling violence against women and girls. They rely on feedback to improve their services and to continue their efforts they have launched a survey to hear of any experiences. The results will be used to further improve what they do with the aim of making Sussex safer for everyone. They will influence how they make decisions on where they prioritise their policing services and help them to provide better information to victims of crime about the services they provide. The survey takes approximately 10 minutes to complete and is completely anonymous, unless you have identified yourself within the responses you give. It can be found at:

<https://sussexpolice.welcomesyourfeedback.net/s/vawg23>

### **Office Opening Hours**

Please note that the Parish Council office will be closed for the last week of February 2024.

### **Parish Council Meetings**

The meeting schedule on the website: <http://www.mayfieldfiveashes.org.uk/> shows this month's Council and Committee meetings as well as agendas, minutes of meetings and other meeting documentation.

Janna Todd, Parish Clerk

Old Manor House, High Street, Mayfield TN20 6AL

Telephone 873784

E-mail: [clerk@mayfieldfiveashes.org.uk](mailto:clerk@mayfieldfiveashes.org.uk)

## OBITUARY

### Steven Moore, Rapkyns Nursery

We were deeply saddened to learn of the death of Steven Moore of our local Rapkyns Nursery in Broad Oak on Christmas Eve. He had battled with Motor Neurone Disease for over two years. Please make a donation to this very worthwhile charity in his memory if you wish.

Steven was a frequent and welcome figure at our events over many years; his talks were inspiring and packed with decades of knowledge, which he was always generous to share if asked. Hundreds of us have many plants in our gardens that came from his nursery. I'm sure we all wish to send our heartfelt condolences to Morag and his family and to let them know he will be much missed. We all sincerely hope that Rapkyns will be able to continue. **Tessa Crowe**



## MAYFACS (Mayfield & Five Ashes Community Services)

London House, High Street, Mayfield, TN20 6AQ

[www.mayfacs.org.uk](http://www.mayfacs.org.uk)

HELPLINE 873888 (answer phone system)

**MAYFACS OFFICE OPENING TIMES:** Monday, Tuesday and Wednesday between 10am - 1pm every week. Helpline phone number is monitored Monday to Friday only.

**MAYFACS OFFICE** [info@mayfacs.org.uk](mailto:info@mayfacs.org.uk)

**BANK DETAILS:** (for donations, payments of trips and activities)

**Mayfield & Five Ashes Community Services (MAYFACS)**

**Account No 00029924 Sort Code 40-52-40**

### FEBRUARY'S NEWS

**MATINÉE FILMS** Our specific programme of films are open to EVERYONE to attend. No booking necessary! Bring friends or family or come on your own and enjoy an afternoon of entertainment and refreshments. Doors open at 1.30 pm for a prompt start at 1.45 pm.

Admission is £6 on the door. Transport is available from Mayfield at £3 per person return. Please pick up a flier from our office or around the village for more information. Please note, the MAYFACS Matinee Films run a different programme from the Film on Friday evening series.

**FEBRUARY 9<sup>th</sup>:** What's Love got to do with it?

**FEBRUARY 23<sup>rd</sup>:** Emily

The next Repair Café will be at MAYFACS Shed on **Saturday, 24<sup>th</sup> February 10am – 1pm**. This is a chance to visit the Repair Café and see the activities we have on offer, as well as to come and join our volunteer repairers for a slice of cake and drink if you are passing by. Everyone is welcome and you do not even need to bring a repair to pop in! If you do bring a repair, please note that we aim to repair items on the day as much as possible, so please do not bring restoration projects. Donations are gratefully received for repairs.

**MAYFACS Shed Quiz: Saturday, 3<sup>rd</sup> February**

7.30pm start, £10 per ticket including nibbles. Licensed bar.

Tickets on sale at BURNETTS – last tickets still available at time of going to print!

## MONTHLY TRIPS

**Monthly Trip places** will be allocated on a first come, first served basis. Please email or pop into the office to secure your place! If you would like to attend any of our trips but need some financial support, please talk to us in confidence.

**Thursday, 15<sup>th</sup> February**

Lakedown Taproom and Brewery tour, Burwash Weald £10

**Thursday, 21<sup>st</sup> March** Ashford

Outlets Shopping Centre £10

## April Trip TBC

**Thursday, 16<sup>th</sup> May** South Brockwells Farm and Shop and Café, Uckfield £10

**Thursday, 20<sup>th</sup> June** Farleys House and Gallery, Chiddingly £32

**Thursday, 18<sup>th</sup> July** Busi

Jacobsohn Vineyards tour and tastings, Eridge £36

Please visit our website

[www.mayfacs.org.uk](http://www.mayfacs.org.uk) for updates of weekly activities or contact us at the MAYFACS Office on 873888. You can also join our monthly eNewsletter mailing list to get full details on everything that we do to support our community by contacting [clare@mayfacs.org.uk](mailto:clare@mayfacs.org.uk).



**MAYFACS COMMUNITY SHED**

Merrieweathers Farm, East Street, Mayfield TN20 6RJ

The MAYFACS Shed and Community Garden is an opportunity for anyone to come along, meet some friendly people, work in the workshops or outdoor spaces on your own personal projects or community projects.

**WEEKLY SESSIONS**

**MONDAY (Mixed Group) 9.30am - 12.30pm**  
**WEDNESDAY (Men's Group) 9.30am - 12.30pm**  
**THURSDAY (Mixed Group) 9.30am - 12.30pm**

**REPAIR CAFES** 

Fourth Saturday of every month (except August and December) at MAYFACS Shed (Refreshments available) 10am - 1pm

Bring your repairs along, join us for tea and cake, and get to know our Repairers! You are also welcome along without repairs! Volunteer Repairers always welcome!

For more information  
Email us on [theshed@mayfacs.org.uk](mailto:theshed@mayfacs.org.uk)  
Call MAYFACS on 01435 873888  
Visit our website [www.mayfacs.org.uk/the-shed](http://www.mayfacs.org.uk/the-shed)  
or Follow us on Facebook  
[www.facebook.com/MayfacsShed](https://www.facebook.com/MayfacsShed)





# MAYFACS Weekly Activities

**MON**

## **Yarners**

Chat and knit, sew and crochet in Sew Inspired shop in the High Street, £2 per person, 1.30-3.30pm. No need to book.

**TUE**

## **Tuesday Chat**

A chance to meet up and chat with refreshments in Colkins Mill Church, Station Road, Mayfield. 2-3pm. £2. Every Tuesday apart from the first Tuesday of the month. No need to book.

**TUE**

## **Tuesday Afternoon Club**

First Tuesday of the month in Colkins Mill Church 2-4pm £3 including a Speaker, raffle and a light afternoon tea. No need to book. Please bring a small prize to share for the raffle.

**Wed**

## **Wednesday Chat**

A chance to meet and chat with refreshments, 2-3pm in Five Ashes Village Hall., £2. Every 2nd and 4th Wednesday. Transport available. No need to book. (Speaker on 4th Wednesday).

**Wed**

## **Writing for fun!**

A monthly group on 3rd Wednesday of each month at 10am – 12pm in London House. £3 including refreshments.

**Wed**

## **Little Munchkins Baby & Toddlers Group**

For all carers, parents and grandparents and under fives. Every Wednesday, term time only in the Scout Hall 9-11 am. £3 per family. Refreshments provided.

**Thur**

## **Community Café Crowborough**

A dementia friendly group for people to come together to enjoy an activity and refreshments. Last Thursday of the month. 2-4pm. Chaperoned transport available from Mayfield.

**Thur**

## **Poetry**

1st Thursday of the month 11-12.30 Coach House Cottage, Royal Oak Mews £2.

**Thur**

## **Middle House Lunch**

2nd Thursday of the month by invitation only on a rota basis. £12.50 for senior citizens living alone. Subsidised 2 course meal.

**Fri**

## **Games/Scrabble/Cribbage**

3rd Friday of the month 2-4pm £3 at London House, bring a game or join in with some friendly games.

**Fri**

## **MAYFACS Film Club (OCT-MAR)**

Five Ashes Village Hall. See attached programme of films. 1.45-4pm £6. Transport from Mayfield £3



# DATES FOR YOUR DIARY

## REGULAR WEEKLY GROUPS

Monday	Mayfacs Shed - mixed group	Mayfacs Shed 9.30am -12.30pm
	Art Club	Five Ashes Village Hall 10-12.30pm
	Yarners	Sew Inspired, High Street 1.30 – 3.30pm
	Chair-based yoga	Scout Hall 10 - 11am Not Aug/Dec/April
	Yoga	Scout Hall 6.30 – 7.45pm
	Ideal Performing Arts	Five Ashes Village Hall 6.00 – 8.00pm
	Table Tennis Club	Five Ashes Village Hall 8.15-21.45pm (Sept-May)
Tuesday	Pilates	Five Ashes Village Hall 8.30-9.30am
	Chair-based yoga	Scout Hall 10 - 11am Not Aug/Dec/April
	Mayfacs tea & chat	Colkins Mill Church 2 - 3pm - not 1st Tuesday of month
	Circle Dance	Scout Hall 2.30 – 4.30pm
	Pilates	Five Ashes Village Hall 6.15-7.30pm
Wednesday	Pilates	Five Ashes Village Hall 9-10am
	Discofit Gold - Fitness Dance	Five Ashes Village Hall – 10-11am
	Mayfacs Shed - Men Only	Mayfacs Shed 9.30am -12.30pm
	Mayfacs Baby & Toddlers	Scout Hall 9-11am (term-time only)
	Creative Social	Sew Inspired. High Street 10am – 1pm
	Mayfacs tea & chat	Five Ashes Hall, 2 <sup>nd</sup> and 4 <sup>th</sup> Weds. 2 – 3pm
	Heathfield Fitcamp	Five Ashes Hall - 18.30-19.30
	Studio Dance	Five Ashes Village Hall – 18.50-19.50pm
	The Rose & Crown Quiz	Rose & Crown, Fletching Street, 7.30pm
	Mayzing Choir practice	Mayfield Scout Hut: 8.00 – 10.00pm
Thursday	Mayfacs Shed - mixed group	Mayfacs Shed, 9.30am - 12.30pm
	Pilates	Five Ashes Village Hall – 10.30–11.30am
	Baby Explorers	Five Ashes Village Hall – TBC
	Happy Tai Chi	12-1pm
	Mayfield Handbell Ringers	London House, 4-5.30pm
	Pilates	Five Ashes Village Hall – 5-6pm
	Cogs – School Years 4-6	Colkins Mill Church 6.30-8pm
	Five Ashes Rifle Club	Five Ashes Village Hall – 7-9.30pm Sept-April
	Happy Tai Chi	Five Ashes Village Hall – 7-8pm
Friday	Art Class	Five Ashes Village Hall – 10.30-12.30pm
	Yoga	Scout Hall 10 – 11.15am
	Pre & Post Natal Exercise	Scout Hall 11.30am
	Junior tennis coaching	Mayfield Tennis Club - 3.30 onwards
	Ideal Performing Arts	Five Ashes Village Hall 5.00 – 8.00pm
	Mayfield Band rehearsal times: The Bandroom, Court Meadow Beginners from 5pm; Junior group 6-6.30pm; Youth Band 6.30-7.30pm; Senior Band 7.45-9.45	
	Cogs – School Years 7-9/10	Colkins Mill Church 7-8.30pm Year 10s 7.45pm
Saturday	Saturday Picnickers	London House 12.30-2.30pm



## FEBRUARY 2024

Thursday	1	Wadhurst & District Flower Club	Stonegate Village Hall, 1.45pm
Thursday	1	Mayfield Girls School - Addams Family School Edition - play	Trinity Theatre, Tunbridge Wells
Friday	2	Mayfield Girls School - Addams Family School Edition - play	Trinity Theatre, Tunbridge Wells
Saturday	3	Mayfield Horticultural Society Social & Seed Swap	Scout Hall 10am-1pm
Saturday	3	Mayfacs Shed Quiz	Five Ashes Village Hall 7.30pm
Saturday	3	Organ Plus concert	St. Dunstan's 6pm
Sunday	4	DART Motorsport Social	Former Freestyle site, nr. Wadhurst, 10am - 2pm
Friday	9	MAYFACS matinée: 'What's love got to do with it?'	Five Ashes Village Hall, 1.45pm
Friday		Film on Friday: 'In the mood for love'	Five Ashes Village Hall, 7.45 for 8.15pm
Tuesday	13	Mayfield Evening W.I.	Colkins Mill Church 7.15pm
Wednesday	14	Ash Wednesday services	St. Dunstan's, 10am & 7.30pm
Thursday	15	Mayfacs Trip	Lakedown Taproom & Brewery
Thursday	15	Mayfield U3A General Meeting	Five Ashes Village Hall 2pm
Friday	16	MHS talk	Via 'Zoom' - 7.30pm
Thursday	22	Lenten Lunch	London House, noon - 2pm
Friday		Film on Friday: 'One Fine Morning'	Five Ashes Village Hall, 7.45 for 8.15pm
Friday	23	Mayfield Local History Society: talk	Scout Hut, 7.30 for 8pm
Thursday	29	Lenten Lunch	London House, noon - 2pm

## MARCH 2024

Friday	1	World Day of Prayer	St. Dunstan's 2pm
Saturday	2	Organ Plus concert	St. Dunstan's 6pm
Thursday	7	Lenten Lunch	London House, noon - 2pm
Thursday	14	Lenten Lunch	London House, noon - 2pm
Wednesday	20	RBL Branch Meeting	Mayfield Cricket Club, 6.30pm
Thursday	21	Boyes & Belles Wine & Cheese Evening	Rose & Crown TBC



**Sacred Heart School**  
Wadhurst



# OPEN DAY 26 APRIL

ISI RATED  
**EXCELLENT**  
IN ALL AREAS  
APRIL 22



**Discover Sacred Heart**, an Independent, Catholic nursery and primary school welcoming boys and girls of all faiths and none, aged 2-11.

Exceptional pastoral care and individual academic achievement with small classes and wrap around care.

Outstanding, thriving **Little Hearts Nursery** with fantastic, purpose built facilities.

Scholarship and 11+ success. Recent ISI inspection rated 'Excellent' in all areas.

[www.sacredheartwadhurst.org.uk](http://www.sacredheartwadhurst.org.uk)



Contact us to book your place on a tour  
01892 783414 [admin@sacredheartwadhurst.org.uk](mailto:admin@sacredheartwadhurst.org.uk)  
Scan our QR Code

  
**THE SUNDAY TIMES**  
TOP 50 PREP SCHOOLS 2023

# Sussex Cutting Garden



Homegrown Beautiful Flowers

Bespoke floristry for  
Weddings, Farewells and all events  
Also Gift Bouquets & DIY flowers

[www.sussexcuttinggarden.co.uk](http://www.sussexcuttinggarden.co.uk)

[caroline@sussexcuttinggarden.co.uk](mailto:caroline@sussexcuttinggarden.co.uk)

Call 07951 161548

Coggers Cross, Horam TN21 0LG

Visits by appointment only

THE  
ARTISAN DESIGNERS

Decoupage with a Twist  
Commissions welcome

Please call for opening times  
**Brigitte 07855 385 824**  
[brigitte.theartisandesigners@gmail.com](mailto:brigitte.theartisandesigners@gmail.com)

The Artisan Designers Ltd  
at The Bull House Studio  
off Lake Street Mayfield TN20 6PR

GA CARPENTRY & KITCHENS  
- SINCE 1997 -

Since 1997 we've specialised in all aspects of carpentry and joinery. We're experts in bespoke wardrobes/cupboards, Kitchens, flooring, windows, doors, loft conversions, period and modern property works.

Checkatrade approved, full project management and full public liability.

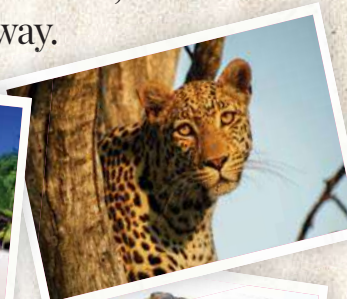
For a free no obligation quotation please call us on **07977 055637**  
[enquiries@gacarpentry.co.uk](mailto:enquiries@gacarpentry.co.uk)  
[www.gacarpentry.co.uk](http://www.gacarpentry.co.uk)

## The Hand Sewn Home

Bespoke  
Curtains  
Roman Blinds  
Cushions

Anya Marsh  
[@thehandsewnhome](https://www.instagram.com/thehandsewnhome)  
07795410093

Wherever you're looking to travel,  
we're with you all the way.



Bianca and Tracy are your 'go-to' agents in Mayfield for where 'to go'. Our passion is to create unforgettable holiday experiences from start to finish, tailored to suit your individual needs and expectations, without the stress of searching online.

PEACE OF MIND • ATOL PROTECTED • SAVE TIME & MONEY

*The Travel*  
**Concept**

Start planning your journey today

01435 866 555

ask@thetravelconcept.co.uk



The Travel Concept



@TheTravelConceptGirls



## Sussex Country Getaways

Allens Farm Oast - Sleeps 8

Allens Farm Loft - Sleeps 2

[www.sussexcountrygetaways.com](http://www.sussexcountrygetaways.com)

E: [allensfarmsussex@gmail.com](mailto:allensfarmsussex@gmail.com)



@allensfarmoast



@allensfarmsussex

*Elm Green*

**creative, seasonal food**



*Simple, inviting food,  
bursting with flavour &  
stylishly presented for  
Canapé Receptions,  
Garden Parties, Buffets,  
Weddings, Dinner Parties,  
Family Weekends &  
Events*

**My creative menus are inspired by  
the seasons and feature local,  
organic produce**

**Please contact Sarah Litchfield**

**07753 821120**

**[sarah@elmgreen.co.uk](mailto:sarah@elmgreen.co.uk)**

**[www.elmgreen.co.uk](http://www.elmgreen.co.uk)**





Tunbridge  
Wells  
Eye  
Centre



Tunbridge  
Wells  
Eye  
Centre

7 Vale Avenue  
Tunbridge Wells  
TN1 1DJ  
01892 240 200



[www.tunbridgewellseyecentre.co.uk](http://www.tunbridgewellseyecentre.co.uk)

**Melina  
Joy**  
OPTICIANS



59 High Street  
Heathfield

01435 868181

[www.melinajoy.co.uk](http://www.melinajoy.co.uk)





Putting your interests first

- Private client services
- Wills and trusts
- Estate administration
- Residential property

19 High Street, Heathfield TN21 8LU

01435 890101

[info@hugheslaw.co.uk](mailto:info@hugheslaw.co.uk)

[www.hugheslaw.co.uk](http://www.hugheslaw.co.uk)

**Peter d'Aguilar**

**FURNITURE  
RESTORATION**

**Repairs & renovation  
French polishing  
Furniture valeting service**

**20 years' experience  
Free estimates  
Based in Mayfield**

**01435 873298 / 07555 253432**

**[peterdaguilar@talk21.com](mailto:peterdaguilar@talk21.com)**

Is your  
**Will**  
up to date?

**Local Will  
Writing Service**

We provide a Professional Will Writing Service in the comfort of your own home at a time convenient to you.

For a **FREE** Will Review & help with all types of **Wills, Trusts, Lasting Powers of Attorney and Probate.**

CALL OUR LOCAL SPECIALIST

**Tony Nunn**  
**0800 1698038**



Institute of Professional Willwriters

**EKW**  
**LEGACY PLANNING**  
[www.ekwlegacyplanning.co.uk](http://www.ekwlegacyplanning.co.uk)

*"You were such a comfort  
to us when we needed it."*

When someone dies there must be time to grieve and reflect on the life we've lost - yet there are people to inform, forms to sign and a funeral to arrange. It's comforting to know that a local, independent and personal funeral service is available at the end of a phone - 24 hours a day.

- Memorial Masons
- 24 hour service
- Pre-paid funeral plans
- Bereavement Support Group
- Member of The National Society of Allied & Independent Funeral Directors

London Road, Crowborough  
East Sussex, TN6 2TT

E - [information@testerandjones.co.uk](mailto:information@testerandjones.co.uk)  
W - [www.testerandjones.co.uk](http://www.testerandjones.co.uk)



*Let us hold your hand...*

**Independent, local funeral services supporting families throughout Heathfield, Crowborough, Uckfield & Wealden.**

We believe that the most important people are your loved ones, and we would be honoured to look after them. We pride ourselves on providing compassionate, respectful and affordable funeral services - whatever your chosen funeral type.



Heathfield: 01435 868844 | Crowborough: 01892 487435  
[hello@wealden-funerals.uk](mailto:hello@wealden-funerals.uk) | [www.wealden-funerals.uk](http://www.wealden-funerals.uk)



# LOCAL CARER

Do you, or someone you know, need an extra pair of helping hands?  
I'm a Carer with over 20yrs experience, living in Buxted, & happy to travel further afield.  
*I have excellent references too, that I'm happy to share...*



I can help with:

- \* **Personal care**
- \* **Shopping**
- \* **Cooking**
- \* **Medicine reminders**
- \* **Light housekeeping**
- \* **Errands**
- \* **Companionship**



...& many other duties

If you feel I could be of assistance, then please don't hesitate to contact me on:

**07779 - 353587**

## ELITE HOME CARE



### SERVICES

- Hypertension monitoring
- Phlebotomy
- Wound dressings/suture removal
- General companionship
- Morning routine assistance
- Guidance taking prescribed medicine.
- Meal preparation
- GP and hospital visits

### ABOUT

- Service provided by a Registered General Nurse
- Dedicated to caring for the community
- Assistance and care provided within 48 hrs.
- 2-4 hourly visits



For more information, please contact Anna Agnew RGN

07880 791002

[Annaagnew26@gmail.com](mailto:Annaagnew26@gmail.com)



## Live-in Care

**We are a local family run agency specialising in live-in home care.**

**We offer a realistic alternative to residential care, providing our clients with one to one live-in care in the comfort and security of their own home.**

**We are based in Tunbridge Wells and provide live-in services to the local areas of Kent & Sussex.**

**Tunbridge Wells 01892 518400**

**[www.bespokecarecompany.co.uk](http://www.bespokecarecompany.co.uk)**



## Yoga

**SCOUT & GUIDE HALL**

Monday 6.30pm-7.45pm

Friday 10.00am-11.15am

[sarah@sarahratcliffeyoga.co.uk](mailto:sarah@sarahratcliffeyoga.co.uk)

Registered British Wheel of Yoga Teacher

01435 873310, 07721 009549



## CHAIR-BASED YOGA

**SCOUT & GUIDE HALL**

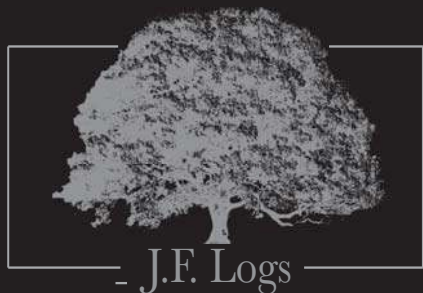
**MONDAY 10-11am**

**TUESDAY 10-11am**

[sarah@sarahratcliffeyoga.co.uk](mailto:sarah@sarahratcliffeyoga.co.uk)

Registered British Wheel of Yoga Teacher

01435 873310, 07721009549



J.F. Logs

Seasoned Firewood

covering all sizes

Contact James Firrell on: 07817 837048

# MAYFIELD PODIATRY



High Street, Mayfield  
[www.mayfieldpodiatry.co.uk](http://www.mayfieldpodiatry.co.uk)  
01435 873848

Routine Footcare – nails, corns & callus  
Neurological & Vascular Assessments  
MSK & Gait Observations  
and Diabetic Foot assessments  
Home visits available



Mayfield Podiatry  
High Street  
Mayfield  
East Sussex TN20 6AQ  
01435 873 848



## WE ARE TAKING ON NEW PATIENTS

**Brand new state of the art surgery up and running NOW!**

To get booked in with one of our dentists or dental hygienists, please give us a call on 01435 873070

Or send an email to [info@woodhilldental.co.uk](mailto:info@woodhilldental.co.uk)



### Treatments Available at Woodhill Dental Centre:

- Facial Aesthetics
- Invisalign
- Composite Bonding
- Teeth Whitening
- Initial/Routine Examinations
- X-Rays
- Hygienist
- Extractions
- Dentures
- Restorative Treatments
- Emergency Appointments

Woodhill Dental Centre | Station Road | Mayfield | TN20 6BW

## The Joint and Back Clinic Nigel Kettle Registered Osteopath

28 Years Experience. Osteopath  
located just outside Mayfield Village in  
Roselands Avenue with Easy Access  
and Free Parking

Osteopathy, Acupuncture, Injury  
Rehabilitation, Electro-Therapy



Call **07939 129626**  
[www.jointandback.com](http://www.jointandback.com)

## Chartered Physiotherapist Katharine Lees-Jones MCSP

### Home visits only

- Musculo-skeletal problems
- Rehabilitation after orthopaedic or general surgery
- Muscle stiffness/aches and pains
- Loss of mobility /balance/ confidence

I also offer Soft tissue massage and Dry  
Needling (Western Acupuncture based  
on physiological principles)

Please contact for an informal chat:  
01435 884141 or 07765 200423





Certified Arborists Specialising in:

# Tree Surgery - Tree Management Stump Removal



[info@acetotaltreework.co.uk](mailto:info@acetotaltreework.co.uk)



07715 231 268

## D.J. CASEY TREE CARE

**TREE SURGERY**

**HEDGE CUTTING**

**GARDEN MAINTENANCE**

**All tree work undertaken –  
from pruning to felling,  
hedges tamed and maintained.**

NPTC Qualified and Fully Insured  
with over 20 years experience.  
All work carried out professionally and  
to the highest standard.



**For all your tree and garden maintenance needs**

**call Darren Casey on**

**01435 812005 or 07798 793176**

## Hérons Folly Garden



### Apple Trees

November through March  
And

### Friday Veg Stall

8:00am – 12:00pm  
During the Growing Season

Apple Juice, Honey, Cider Vinegar and Vegetables  
Available Middle House Deli  
and the House Cafe



All products are organic

[www.héronsfollygarden.co.uk](http://www.héronsfollygarden.co.uk)

(01435) 873608

- Drainage
- Fencing
- Brickwork
- Grass Cutting
- Shrub Clearance/Hedge Cutting
- Footings
- Patios

**Bryn Gorringe**

07585 391 165

[bggroundworks.co.uk](http://bggroundworks.co.uk)

[contact@bggroundworks.co.uk](mailto:contact@bggroundworks.co.uk)



GROUNDWORKS AND LANDSCAPING

**Cobweb**  
GARDENWORKS

We offer professional,  
comprehensive  
garden solutions &  
maintenance services

Please contact Richard:

**07852 549005**

[info@cobwebgardenworks.uk](mailto:info@cobwebgardenworks.uk)

[www.cobwebgardenworks.uk](http://www.cobwebgardenworks.uk)



ALWAYS IN SEASON



**Philip  
Barnes**  
GARDEN DESIGN

A local professional Garden Design  
service creating inspirational gardens.

My services include:

- Full Garden Design
- Planting Plans
- Maintenance Advice



07971 469909

[philip@philipbarnesgardendesign.com](mailto:philip@philipbarnesgardendesign.com)

[www.philipbarnesgardendesign.com](http://www.philipbarnesgardendesign.com)

01435 873568

**wellbrook**  
motor services

Wellbrook Motor Services offers complete service and maintenance packages for your car. Courtesy car or local collection/delivery are available to your home or place of work.

**Servicing**

All manufacturers and models incl. Hybrid &amp; EV

**Air Conditioning**

Re-gas (R134A &amp; R1234YF), service &amp; repairs.

**MOT Testing station**

Same day MOT's &amp; no re-charge fees

**Computer Diagnostics**

Diagnosis can normally be done while you wait

**Repairs**

- Tyres
- Clutches
- Exhausts
- Shock Absorbers
- Brakes
- Batteries
- Accessories

**Opening hours:** Mon-Thurs: 8:00 - 17:30

Fri: 8:00 - 17:00

Sat: Available by Appointment

[www.wellmotor.co.uk](http://www.wellmotor.co.uk)**KEYMARK**  
LOCKSMITHS**For All Your Security Needs**

- 24hr Locksmith Service
- No Call Out Charge
- Domestic & Commercial
- Lock Fitting (*Insurance Approved*)
- uPVC Door & Window Lock Specialists
- Garage Door & Lock Repairs
- On Site Key Cutting (*We come to you*)

**Call Danny****01435 868493****07759 800694**Email: [danny@keymarklocksmiths.com](mailto:danny@keymarklocksmiths.com)[www.keymarklocksmiths.com](http://www.keymarklocksmiths.com)

Practical members of  
**Checkatrade.com**  
Where reputation matters



Hailsham Road, Heathfield, East Sussex TN21 8AE

**Self Storage in  
Mayfield****6m x 2.5m (30cbm)****3mx2.5m (15cbm)**

(Approx. capacity)

[neale.robinson@wellbrookfarm.co.uk](mailto:neale.robinson@wellbrookfarm.co.uk)

07711 410476

Please email or phone for price and  
availability

**HEFFLE CARS****MAYFIELD & HEATHFIELD****PRIVATE HIRE & TAXI****AIRPORTS-LONDON-DOCKS****LONG DISTANCE - COURIER SERVICE****CREDIT & DEBIT CARDS ACCEPTED****FAMILY RUN BUSINESS for 30 yrs****TEL: 01435 867287**Email: [kathi@hefflecars.co.uk](mailto:kathi@hefflecars.co.uk)**Proprietor: DAVID BLACKFORD**

# R Magar

PAINTING & DECORATING

07811 772073

reg.magar@gmail.com

Home & Commercial. Interior  
& Exterior. High Quality at  
Competitive Prices.

[www.rmagar-painter.com](http://www.rmagar-painter.com)

## K&S

**Kent and Sussex  
IT Services**

Supporting Small Businesses  
and Home Users

*Expert Advice . Tuition . Networking  
Repairs . Health Checks . Security . Virus Removal  
Back ups . Data Recovery*



01825 830881  
07899 955289

[www.kands-it.co.uk](http://www.kands-it.co.uk)  
[enquiries@kands-it.co.uk](mailto:enquiries@kands-it.co.uk)

## **LOCAL ELECTRICIAN CHRIS MACRAE**

**C MACRAE ELECTRICAL  
ELECTRICAL WORKS & REPAIRS**

**NICEIC REGISTERED**

**01892 669205**

**07885 458033**

## **DIY Buddy**

Need a hand with property maintenance?

Mayfield based experienced handyman  
ready to help you with your DIY projects: -

Carpentry, landscape gardening, gardening  
projects, house maintenance, woodwork  
renovation, painting and decorating etc.

From small projects lasting a few hours to  
more ambitious ideas lasting weeks call  
Andrew if you need a hand.

Friendly, professional and extremely  
hardworking.

Telephone 07909967052



## Daryl Burton Carpenter/ Builder

All building works undertaken  
including Bathrooms, Kitchens,  
Wardrobes, House Maintenance and  
Renovations

With over 30 years of experience in  
the construction industry working  
locally in Mayfield

Email: darylburton44@hotmail.com  
TEL: 07790 790439



## A Clean Sweep Ross Atabey & Son

Chimney sweeping - including smoke  
test and certification

01435 812 153  
07941 315214

Member of Association of Professional  
Independent Chimney Sweeps

[acleansweep009@gmail.com](mailto:acleansweep009@gmail.com)

[www.facebook.com/acleansweeporam](http://www.facebook.com/acleansweeporam)

## J Lunnon Pools & Spas



J LUNNON & SON LIMITED

**We have the experience**  
**Call 01892 610610**  
**For all your pool & spa needs.**  
**Construction, Maintenance,**  
**Breakdowns, Energy efficient**  
**heating, Chemicals & Equipment**  
**(In store water analysis)**  
**Gas Safe (CORGI) & OFTEC**  
**registered engineers**  
**Domestic & Commercial**  
**Indoor & Outdoors**

## J Lunnon & Son Ltd Master Plumbers



J LUNNON & SON LIMITED

**Fully qualified Gas Safe (CORGI)**  
**OFTEC oil engineers**  
**Experienced in old & new boilers**  
**Devoted to energy saving & renewable**  
**energy sources**

**01892 610610**

**No call out charge**  
**Boiler breakdowns/ system problems**  
**No job too big or small**  
**Outstanding reputation & accurate time**  
**keeping**  
**Fully insured up to £10,000,000**  
**Just call us!**



# MAW Property Maintenance

Contact Miles on 01435 868823 07496 124 736



**Internal and External Decorating.**

**AND:** Carpentry, Guttering, UPVC Cleaning, Drain Rodding, Floor and Wall Tiling, Patio Pointing and Jet Cleaning, Panel Fences, Kitchen and Bathroom unit make-overs.....and much more.

**Handyman Services - no job too small**

Fully AXA Insured

**rats** **mice** **bedbugs**  
**ants**  
**moth** **fleas**  
**bees** **woodworm**  
**wasps** **squirrels** **cockroaches**  
**birds**

• domestic & commercial

• service contracts

• unmarked vehicles

• senior citizen  
concessions



National Pest Technicians Association

**go pest**

fast, effective, reliable same day service

**Call: 01323 811011**

www.gopest.co.uk e:info@gopest.co.uk  
pepperham, ripe, lewes, sussex bn8 6aw

## **Traditional Mole, Mice, Mink Rabbit and Squirrel catcher**

*(No poisons used)*

*Traditional methods only*

**PETER KING**

Home 01892 520287

Mobile 07432 813614

[pkingmoles@outlook.com](mailto:pkingmoles@outlook.com)

**Mayfield and Five Ashes**



**Pressure Washing  
Services**

We clean .....

- Driveways & patios
- Solar panels
- Property exteriors
- Horse boxes
- Cladding

Contact : 07872 170586

Email: [pm\\_french85@live.co.uk](mailto:pm_french85@live.co.uk)

Visit: [www.pmfservices.co.uk](http://www.pmfservices.co.uk)

PMF Services on Facebook



## VALENTINE'S DAY

All you need is love... and the pub. Spread the love this Valentine's Day and treat the one you adore to a meal to remember at The Lazy Fox, Mark Cross

Make this February 14th the best one yet with our daily menu plus Valentine's Day specials!

Find out more and book at [elitepubs.com](http://elitepubs.com)

 [the.lazy.fox.markcross](https://www.instagram.com/the.lazy.fox.markcross)  [thelazyfoxmarkcross](https://www.facebook.com/thelazyfoxmarkcross)

**GLYNDE PLACE  
CONCERT SERIES 2024**  
with *BBC RADIO 3* NEW GENERATION ARTISTS

<b>LAURA VAN DER HEIJDEN</b> cello with <b>JAMS COLEMAN</b> guitar	A. SCHNITTKE N. BOULANGER G. WALKER C. DEBUSSY C. FRANK
F. SCHUBERT C. DEBUSSY F. CHOPIN	<b>ALIM BEISENBAYEV</b> piano
<b>CONSONE STRING QUARTET</b>	F.J. HAYDN W.A. MOZART K. CZERNY

27 April - Laura van der Heijden & Jams Coleman  
25 May - Alim Beisenbayev  
22 June - Consone String Quartet

   new generation artists

Tickets, info and other events - [glyndeplace.co.uk](http://glyndeplace.co.uk)

MAYFIELD FESTIVAL OF

# MUSIC & ARTS



26-12  
APR MAY '24

BOX OFFICE NOW OPEN

[MAYFIELDFESTIVAL.CO.UK](http://MAYFIELDFESTIVAL.CO.UK)



# Scarlett's Frocks & Threads

2 Church View, High St, Mayfield TN20 6AB  
01435 873520  
www.scarlettsfrocksandthreads.co.uk  
Bridal ♥ Prom



PROPERTY PROFESSIONALS FOR OVER 120 YEARS



**Professionally endorsed  
letting and estate agent  
for your *peace of mind***

Being regulated by industry standards means we are aware of, and align with, all the laws and regulations in the industry. Why is it advisable your chosen agent has professional endorsements? We look at the headline points below, so you can make a more informed choice.



The world's leading professional body enforcing the highest international standards in the valuation, management and development of land, real estate, construction and infrastructure.



A government-approved scheme providing consumers with an alternative dispute resolution service. This means you will be fully protected should the need arise.

arla | **propertymark**

A mark of excellence for letting agents. Members operate to professional standards far higher than the law demands.

naea | **propertymark**

The UK's leading professional body for estate agents. Members work to higher standards than the current laws demand.



**Book a FREE, no obligation, market appraisal**

By phone **01435 873 999**, by email **sussex@lambertandfoster.co.uk**, online **lambertandfoster.co.uk** or at our **Wadhurst office**.





Sunset over East Street by Simon Heaton Photography (above)  
and Sunrise, Court Meadow by Emily Gayton

