

MAYFIELD & FIVE ASHES NEWSLETTER



Gabriel Interiors

of Mayfield

FULLY
FITTED

Made To Measure Curtains ~ Blinds ~ Shutters
Soft Furnishings ~ Tracks and Poles ~ Interior Design Advice

FREE
ESTIMATES

Please phone or email to book an appointment, for design advice or measuring, at the showroom or in your own home. We have a vast array of fabrics and materials to choose from and a breadth of experience to share with you.

🏠 1 Church View, High St, Mayfield TN20 6AB

📞 01435 873670 🌐 www.gabrielinteriors.co.uk

The Hair Studio



FREE CONSULTATIONS
20% OFF*

Tel: 01435 873323

7 High Street • Mayfield • East Sussex TN20 6AA

www.hairstudio.uk.com

*your first visit (cut and finish only)

burnett's

Individual Property : Individual Service

www.burnetts-ea.com

We are proud to be recognised at the EA Masters awards in 2022 as one of the top 10% Estate Agents in the UK for sales!

Find us in the Best Estate Agents Guide 2023

Or even better – if you are selling, make us your number 1 choice!

Mayfield Office

3 Church View House
High Street
Mayfield
TN20 6AB

01435 874450

Wadhurst Office

Clock House
High Street
Wadhurst
TN5 6AA

01892 782287



Front cover: Late Night Shopping by Julie Salwey

Thanks to Barbara Murray, Claudia Salwey, Ben Martin and Janet Crossley and all the organisations for their photographs. Please do send us your images to

mayfieldnewsletter2012@gmail.com

WELCOME FROM THE EDITORS



Happy New Year to all our readers. We have a joyful edition this month with so many interesting and fun articles, not to mention some wonderful photographs.

Sadly, we have not had anyone show any interest in helping out our hardworking Advertising Secretary. This voluntary rôle requires proficiency in AppleMac, MS Word and Excel together with good organisational and interpersonal skills but



training can be given. The work is flexible and can be carried out remotely. If you think this might be something for you, or someone you know, please contact mfanadvertising@gmail.com and we will forward a more detailed job description.

Please do take the time to read about the villages' many varied groups and societies. We are so lucky to have them but they really do need new support in order to thrive. How about learning a brass instrument? Then there is our wonderful Mayfacs, the Evening W.I., the Local History Society, Mayfield Horticultural Society, Five Ashes Horticultural Society, Film on Friday, U3A, the Boyes & Belles Bonfire Society and the Mayfield Golfing Society. Our churches offer a warm welcome, not just on a Sunday. Need we go on...! Just put aside half an hour or so, with a beverage, cordial, or glass of something alcoholic and explore what Mayfield and Five Ashes have to offer.

Jeanette Hore & Philip James

DEADLINES AND HOW TO CONTACT US

MONTHLY SUBMISSIONS to mayfieldnewsletter2012@gmail.com by noon on the 15th of the month. Please include your name, organisation, or the topic of your copy in the 'Subject' line of your email. Submissions must show the subject, name of author and a contact number in case of queries. No anonymous submissions will be accepted.

FOR BLACK/WHITE & COLOUR ADVERTISING email: mfanadvertising@gmail.com.

DEADLINE FOR BOOKING SPACE IS 10th WITH PDF ARTWORK BY 16th

FOR ANNUAL £25 SUBSCRIPTIONS: You can set up a standing order and pay online as follows:- £25 to Mayfield Five Ashes Newsletter; NatWest Bank, Sort Code 60-10-30; Account No. 60849975 or by cheque sent to Graham Soar, Owl Lodge, Tubwell Lane, Crowborough, TN6 3RJ. Payment must be received by the 19th of the month to receive the following month's edition by post. Don't forget to also send us your name and address - you can do this by email to: mfansubscriptions@gmail.com

USEFUL INFORMATION

Post Office Normal Opening Hours: Monday - Friday 09. 30 – 16. 30; Saturday 09. 30-1pm. Closed Sunday. **Closed on Saturday 23rd December at 12:30pm and will open again on Thursday, 4th January at 9:30am**

NATWEST MOBILE BANKING SERVICE

The service operates on Mondays (except Bank Holiday Mondays) from 1. 15 to 2. 15pm in the Memorial Hall overflow car park

Bus Route 226 operates 3 days per week on **Tuesdays, Thursdays and Saturdays**. For fare paying customers a single trip to Crowborough is £2.00 and a return fare is £4.00. Concessionary passes are accepted on this service.

Departs from Southmead via the High Street then St. Thomas of Canterbury

Departs Southmead Arrives at Crowborough

10:16 10:47

12:16 12:45

Departs Crowborough Arrives at Southmead

11:45 12:16

13:15 13:46

LOCATION OF ALL DEFIBRILLATORS: **Five Ashes Primary School; Woodhill Surgery** - in the entrance porch; **Mayfield Primary School; Telephone Kiosk outside Rose & Crown**. Defibrillators are housed in weatherproof boxes and are accessible 24/7. Full audio prompts guide you through as soon as you open the lid.

FEATURES

THE LUXURY OF FOOD

By the time you read this Newsletter, Christmas will have passed, and we will almost certainly be into 2024. It is to be hoped that the festive season was happy and convivial for everyone in Mayfield and Five Ashes and, no doubt, a few New Year resolutions to eschew the drink, or to lose a few pounds in weight are now being half-heartedly observed, if not ditched altogether.

Sadly, as we now hear regularly in the media, over-indulgence in food is but a fantasy for many people, for whom being able to put any food on the table for the family at any time of the year is a luxury. For them it is only made possible by the many foodbanks and community larders which have sprung up throughout the country in the last 5 to 10 years.

‘Bah humbug!’ is a reaction I have heard from those who believe that failure to provide the very basics of family life is simply down to bad financial management or misjudgement, or improper use or abuse of available benefits. In a few cases that might be true, but in my experience as trustee of a local foodbank in Kent, with which I have been involved for the

last 6 years, few of our clients would want to be in the position of needing to be referred for the delivery of food parcels if they could possibly help it. Furthermore, whilst many of those clients are on benefits, a similar number are now from families where the adults are both in work but, due to the energy crisis and huge increase in cost of food, they still cannot make ends meet.

The cost of living and energy crises have also meant that, whereas in 2018 (when I became a trustee) the charity had little money but no shortage of food donations which arrived by the ton, these have now substantially reduced, simply because people can no longer afford to give food away. During the Covid lockdown period, we received many financial donations, which have made it possible for us to buy the food to distribute instead, but the sad fact is that both food and finance are now becoming harder to resource and that is a problem which all foodbanks are currently facing, to the point where some are having to close.

So next time I go to the supermarket, I am going to put 'food donation' on my shopping list to remind me, as I so often forget until it's too late, and I invite you to do the same. All contributions, however small, will be appreciated both at the foodbank they go to, but more especially by the people receiving them. Let's all remember that having food on the table is a basic human right and not a luxury, and that 'there but for the grace of God go I.'

Sue Smith

SUSSEX WILDLIFE TRUST

I Got You Under My Skin

I like to think that most of us are good neighbours to the wild animals with which

we share this planet. We feed the birds, grow flowers in the garden for bees and butterflies, but if wildlife gets too close or, heaven forbid, enters our houses we are reaching for the fly spray or a rolled-up newspaper. I get plenty of people complaining to me about home-invading wildlife, as if I am some sort of envoy for the animal kingdom. Yet while they moan about clothes moths in their wardrobe, I just stand there smiling, reassured by the knowledge that these people have wildlife living right under their noses. Well, to be more precise, right in their noses.

OK, I warn you now: after reading this article some of you will be scouring your face with a Brillo pad. But it's time to face the facts. Your face is crawling with animals. You, yes you, have face mites. And there's no 'might' about it – research has shown that 100% of adults have them. Our faces are one big nature reserve for mites: from your mountainous nose and skin pore caves to your eyelash jungles. In fact, our faces are home to two different species. *Demodex folliculorum* thrive in your eyelashes while *Demodex brevis* lurk in your pores. They're feeding on dead skin cells and oils but don't harm us – a commensal parasite.

Before you run to the bathroom mirror, these guys are tiny. I'm not going to lie to



Demodex folliculorum.
Credit: Sussex Wildlife Trust

you, they're not pretty (unless you think a microscopic 8-legged slug is pretty) and under high-powered microscopes they look like something you'd encounter in a galaxy far, far away. The egg and larval stages last two weeks and you'll probably be relieved to hear that the adults live for just five days and then die. And it's right about here you'll realise that these things are constantly mating on your face. You can scrub and scrub but you can't wash away the hard truth: you're just a mammal. And like dogs, cows, orangutans and meerkats we're the perfect hosts for a range of parasites.

Personally, I've grown quite fond of my little pets – despite never being able to see them. When I go to bed at night, I imagine Clarence the Demodex, climbing from his pore, going for a wander across my cheek and hoping to meet a girlfriend. But instead he meets his nemesis Evil Arthur and a mite fight ensues until ...well, you get the idea. There are hundreds of these little adventures happening on your face every night. Sweet dreams.

Michael Blencowe

MAYFIELD IRON IV: Henry Neville

Thomas Gresham's heir by marriage, Henry Neville, brought his new wife, Anne Killigrew, to Mayfield in 1583. Both fathers of the couple (also called Henry) were fierce Protestants, having forged a firm relationship in exile in Padua during Queen Mary's Catholic reign. Killigrew had been one of the chief plotters against Mary and then became England's chief of arms procurement. He was responsible for replacing Antwerp with Hamburg as the chief port for English exports.

Young Henry Neville had returned from a four-year tour of Europe with his tutor from Merton College Oxford, Henry Saville.

They collected and copied manuscripts for Thomas Bodley's newly established library. Prague, Vienna, and Padua introduced them to astronomers (including Tycho Brahe) and mathematicians. On return Saville chaired the Committee responsible for translating much of the New Testament for the King James Bible.

In Mayfield, Neville focused on his iron foundry in Vicarage Wood, producing large quantities of cast iron cannon for export through his father-in-law's international contacts. The chief market was the Dutch rebels fighting against their Spanish colonists. Nicknamed the "sea beggars", they used shallow draft boats to attack Spanish shipping amongst the shoals of the Dutch coast, particularly during the 1588 Armada when they prevented their barges from carrying Spanish invasion forces across the Channel. The navy was wedded to lighter bronze cannon so did not use Mayfield guns. One of Henry's guns is proudly



displayed in the town square at Zwolle in the Netherlands.

The Mayfield Furnace was managed by William Luck, whose family lived at Charity Cottage in Fletching Street. Founding and moulding expertise was provided by Guillaume Barbie, a French immigrant expert, probably a Huguenot fleeing from persecution. Neville's partner was Robert Sackville who lived at Bolebrooke in Withyham, son of Elizabeth's Lord Treasurer. Correspondence between the two is a unique survivor for the Tudor industry in Sussex. The main subject was the quality of the guns: small imperfections led to rejection and arguments about the large gunpowder charges used in testing or "proofing". Despite this, the Furnace made a profit of up to £800 a month.

In 1583 the Earl of Warwick, Robert Sackville's uncle, who was Master of the Queen's Ordnance, visited Mayfield to sort out a complaint about illegal practice. The arms industry has always been hard-wired to corruption, and Neville developed skills

in avoiding regulations, helped by his well-connected companions. In 1592 he gained the Royal Monopoly for the export of cast iron cannon.

In 1600 he sold his Mayfield estate. He had moved to the family home at Billingbeare near Reading, hence the need for correspondence.

After an unsuccessful spell as Ambassador in Paris, he returned to take part in the Essex rebellion of 1601. He had been promised the post of Secretary of State. His cunning plan was to be locked in a room during the action which he thought could be defence in the event of failure. He was given a huge fine and spent two years in the Tower of London. Released by James I he spent the rest of his life in politics, concocting ludicrous schemes for overland trade to the Black Sea.

Tim Cornish

Next time: Henry Neville "was Shakespeare".

My book "Medieval Mayfield: Archbishops and Peasants is on sale in "Sew Inspired".

YELLOW PAGES GOING GREEN

MAYFIELD CLIMATE ACTION

We were grateful to the Mayfieldians for a gazebo at Christmas Late Night Shopping and delighted to sign up another 30 people for the Community Forum, now totalling 80. If you would like to be added to the circulation list, just email mayfieldclimateaction@gmail.com.

As we watch COP28 getting nowhere fast, it is easy to become despondent about climate change, but facts on the ground are starting to move at speed with China and the US both installing huge amounts of solar power and battery storage in a race to achieve dominance in cleaner technologies. This should start to influence CO2 emissions. Meanwhile, we can do much to improve our local environment. We hope to begin our survey of light levels in Mayfield during January, as part of our move towards International Dark Sky Community Status. We are delighted to be joining forces with Wadhurst and Ticehurst to deliver broader benefit to Wealden's night skies. Email if you want to become more involved.

We have also been happy to promote five key messages from the National Garden Scheme about sustainable gardening. These are:

1. Go peat free; using peat releases a lot of carbon into the atmosphere
2. Avoid using pesticides to boost biodiversity and protect crucial pollinators like bees
3. Use water sparingly and capture rainfall in butts as much as possible
4. Reduce and eliminate plastic, moving to compostable materials
5. Be conscious of the need for biodiversity, for example in plant choices

The full guidance is available at <https://tinyurl.com/yc3p4rxj>.

John Murray, Project Leader, Mayfield Climate Action 07764 230117

VILLAGE PEOPLE

"ONCE AN IRONMAN, ALWAYS AN IRONMAN"

January, as we all know, is the time to dust off the cobwebs, make a fresh start and put on sports gear. The next step is the hardest; actually getting out of the door and raising the heartbeat in order to embark on another fitness regime. As motivation for all readers, our editor Jeanette thought it would be helpful to interview not one, but three Ironmen, who all happen to be neighbours. So that was how I found myself in the Rose and Crown one December night, pen and notebook in hand, drinking ginger beer as I clearly needed my wits about me. It was quite by chance that Frank O'Brien, Matt Botterman and Reuben Winter ended up living within a few hundred yards of each other in the Warren. Frank, a creative director in the Pharmaceutical industry, has been in Mayfield for fourteen years. Reuben, who until retirement worked in IT, has been at his current address for 3 years and prior to that was in East Street and Matt, who heads up a Laboratory Automation Company and was responsible for the development of 50m PCR tests at the time of Covid, moved to Mayfield from Crowborough 2.5 years ago.



To establish the enormity of the challenge that these three have all risen to, not just once but multiple times in places all over the world including New Zealand and Copenhagen, I thought it would be useful to look briefly into the background of the challenge and then set out what has to be done to become an Ironman, in case anyone feels like giving it a go. It is apparently a great sport to take up in middle age as it needs a steady build up. The first Ironman Triathlon took place in Hawaii on February 18th 1978 having been announced by Commander Colonel John Collins and his wife Judy at a sporting awards dinner where there had been much debate over how to test the world's best endurance athletes. Since that first challenge when there were only 15 participants, there are now hundreds of thousands taking part and it is the biggest endurance event on the planet. It is like an extreme triathlon with the requirement to swim 3.8 kilometres in open water (this is like swimming from Wales to Bristol), cycle 180k (similar to cycling from Bristol to London) and then running a marathon of 42.2k. These tasks must be done consecutively and completed within 17 hours. This time limit is so tight that if it is missed by as little as 1 or 2 seconds, the person cannot become an Ironman. There are other stringent rules; if anyone is seen accepting food en route they are immediately disqualified and will be picked up by the Broom Wagon, which travels the course and picks up those who are too

slow and the 30% of starters who give up. Another offence is throwing litter anywhere other than in the designated place. To overtake when on a bike involves keeping 10 metres behind to indicate that you want to pass. You should then be given 20 seconds by the rider in front to get past. Cards and time out are given if this is not done properly.



Reuben Winter, Frank O'Brien and Matt Botterman

The average age of participants is 40 with a 65/35% ratio of male/female. The sport is seen as equal for men and women. Anyone who completes the challenge is given the title of Ironman, but despite this, when a woman overtakes a man during any of the activities it is known as 'getting chicked'. Frank and Reuben mentioned Christine Wellington OBE, an English former professional triathlete and four-time Ironman Triathlon World Champion. They also agreed that women tend to be exceedingly tough-minded which is essential for success.

So, what is life like when working towards an Ironman challenge? To cope with the 10 - 15 hours training a week they must take in 3 to 4,000 calories per day. The Ironmen saw this as a wonderful type of freedom in that they could eat whatever they liked and, on the day of the race, this increases to 14 to 15,000 calories. They inevitably acquire aches and pains but Matt has an innovative way to help with this by filling a chest freezer with water, turning it on until there are four inches of ice on the top, breaking the ice up and getting in up to the neck for 2.5 minutes. He did admit to having to psyche himself up prior to getting in, but also explained how euphoric he felt half an hour after getting out. As well as ongoing training, the three all enter other challenges throughout the year, for example: Spartan Beast, Tough Guy, Ironbourne, Ultra Marathons and hilly runs like the one from Eastbourne to Arundel.

It seems that the Ironman is all about the challenge - putting yourself under huge physical and mental pressure, which certainly has its low points, but these seem to be outweighed by the pure joy of running and cycling over some of the most beautiful scenery in the world. However, they all agreed that it can't get any better than when running the last few yards along a red carpet with crowds of people cheering you on, ringing bells, shouting out your name and number, especially if you are flagging and, once over the line, being presented with the Ironman Medal. For the people who manage to achieve this feat, even if they never do it again, they must all remember that: 'Once an Ironman, always an Ironman' and it is wonderful to have three living and training in our midst. For further information: www.ironman.com

Barbara Murray

This month, we are profiling JO EATES, one of our new Parish Councillors, as part of our occasional feature on the newly formed Parish Council, after the elections in May this year.

"I am best known in the village for running the Post Office but there is a bit more to know about me. I grew up in Forest Row and after college I spent 18 months working abroad for a ski company, moving to London in 1995. There I worked for 5 years for a company contracted to provide transcripts to the Royal Courts of Justice and the Old Bailey. During this time, I was involved in training numerous judges at the Privy Council, Royal Courts of Justice and on many public inquiries including T5, Bloody Sunday, Omagh bombings and Shipman to name but a few.

I then joined Allen & Overy LLP to set up their electronic litigation document management system. During my 13 years at A&O, I worked on many international and high-profile cases with some of the top international lawyers and barristers.

I gave up this career to be able to spend more time with my young daughters and so moved to Mayfield in 2016 when I set up Rusdens Home. I undertook the Post Office in 2018 which I combined with Rusdens, because the village was without any banks or a PO for more than 12 months, and it was a desperately needed village service. In the time since then, I have become a single parent and fought for 4 years to obtain for my 15-year-old daughter, who has special needs, an Education, Health, and Care Plan (EHCP), and into a specialist school.

I am a frequent visitor to our wonderful Woodhill surgery and am always amazed by the service the Doctors, Nurses and support staff can provide us with bearing in mind the woefully inadequate building they are situated in. I have been a member St. Dunstan's PCC, I am part of the Mayfieldians and I have been involved in many village fundraising activities.

As part of the full Parish Council, I sit on the Planning, Community Development and the Community Safety and Traffic committees. It has been a real eye-opener to me since becoming a Councillor just how much the Parish Council is controlled by Wealden, and ultimately central government, and has very little 'power' to fight for things that we feel are paramount to the Parish and its community. These include keeping High Street shops alive and not permitting them to become residences; reducing speed limits around Mayfield and Five Ashes; filling potholes and making the roads safer for pedestrians, dog walkers and horses as well bicycles and cars and preserving our beautiful heritage villages and the surrounding areas of outstanding natural beauty, to name just a few. The people of our Parish would be surprised at how much work is carried out by our Councillors, and it is a role that I am thoroughly enjoying.



UP AND DOWN THE HIGH STREET

THE CHRISTMAS LIGHTS BIG SWITCH-ON

Thank you to everyone who came to the High Street on Friday, 1st December to listen to the schoolchildren singing and the Mayfield Youth Band playing. It was a memorable evening with Santa's Grotto being a particular highlight for the children. It was an enchanted land so beautifully decorated by our creative team! Thank you to all the shops who opened their doors for this special evening as well. And a final thank you to Mark Delstanche, our Local Hero, for switching on the beautiful Christmas lights.

The Mayfieldians

CHRISTMAS TREE COLLECTION

The Mayfieldians are again offering a recycling facility for your Christmas trees at £2 per tree. Come to Court Meadow on **Saturday, 6th January 2024 between 10am and 1pm** where you can drop off trees and they will be recycled. If anyone would like a tree collected from their home, for £5 per tree we can collect and take it away **between 10am and 1pm**. Trees must have no decorations left on them. Please contact Jeanette on mayfieldians@gmail.com before midday, Friday, 5th January to arrange this or call 872975/077 483 70717. The Mayfieldians have organised this with Ace Total Treeworks who are offering their services free of charge.



STOP PRESS:

Handel's Messiah at St. Dunstan's on Friday, 15th December

Review by Ex-President of the London Philharmonic Orchestra, Stewart McIlwham:

"Of the many performances of Handel's Messiah taking place over the country this Festive season there will be few that will rise to the heavenly levels of the performance given in St. Dunstan's Church on the evening of Friday, 15th December. Every component of the performance was outstanding; from the 4 young soloists, the first rate singing of the Chorus and the stylish and polished playing of the Orchestra. All of this was directed with astonishing maturity, energy and conviction by the young conductor and harpsichordist, Jack Gonzalez-Harding. Still only in his early 20s, his expert grasp of the structure of this long work and choice of tempi belied his tender years. A truly special evening that will stay in the memory long into the New Year."

OUR SCHOOLS

MAYFIELD PRIMARY SCHOOL

Years 4 & 5 Potions Day!

This term Years 4 and 5 in Science have been studying 'Potions and Magic,' as their learning journey. The classes have studied 'Properties and Changes of Materials' in Year 5 and Year 4 have studied 'States of Matter.'

We had a Potions Day to celebrate this learning, investigating: separating different materials, soluble or insoluble solutions – does it dissolve? And finally, we explored reversible, irreversible and semi-reversible materials, culminating with the highlights of exploding Dragon potions. The children, Muggle helpers and teachers had a wonderful day.

Wagtails Class Trip to Lewes Castle

On Wednesday, 22nd November, Wagtails Class pupils arrived in school excited because they were off to Lewes Castle, to help with our work in history. We were so



lucky because the weather was on our side, a clear and bright day!

After arriving and, of course, the inevitable snack, the children were treated to a Saxon storyteller in one of the rooms of the castle. He told us three stories and some of the pupils even got to sit in the special 'throne' in the room, playing roles key to the tales. After that, we trooped into the museum, ready to explore. First, we watched a film about the history of Lewes and discovered that Britain's biggest avalanche had happened there. The children were excited to watch a large model light up, as they were told about different events in history.

Next, we were able to explore the museum. The children were intrigued by the varied exhibits and so many exclamations were heard, demanding that their friends come to see the skeleton, the



arrowheads, the children's toys, the cooking equipment and even the stonework from old buildings. It was so great to see their enthusiasm for the museum. Of course, by this time, tummies were rumbling, and it was time for lunch and a run around in the Castle garden. Our afternoon was taken up with climbing both towers at the Castle until we reached the ramparts. The children loved seeing Lewes spread out beneath them and to see, first-hand, the ramparts and arrow slits that they had been learning about in class. Of course, they also enjoyed the opportunities to explore the dressing up costumes and the chance to use a large crane to try to build a wall in the Castle. Both adults and children really enjoyed their day in Lewes and are looking forward to learning about castles in class. We are very proud of the way the children engaged so positively with all the opportunities they were given and how well they behaved. Well done, Wagtails!



KS1 Nativity

All the children in Reception and Years 1 and 2 did a fabulous job of retelling the story of the Nativity.

Katie Hawkridge

FIVE ASHES PRIMARY SCHOOL

We are now in complete Christmas mode here at Five Ashes! We had a fantastic time performing at the turning on of the Mayfield Christmas lights, where the children loved performing their festive songs. At the time of writing this message, Willow class have just performed their Nativity which was





very special, as you will see from the photos. During this last week of term, we have lots of activities planned for the children. Maple and Oak's Carol Service in the Village Hall, School jumper and Christmas lunch, a joint Christmas Service with Mayfield CE Primary School at St. Dunstan's, and a whole school trip to see 'Beauty and the Beast' at the Assembly Hall in Tunbridge Wells, to name but a few. Oak class are also going to the 'Live Crib' Service at Mayfield Girls School, one of Mayfield Girls School's oldest and proudest traditions.

The children are so excited about all these upcoming events and have worked incredibly hard preparing for them. In addition to these festive events, the children have also been taking part in lots of other learning this term. Our Oak class visited Newhaven Fort and had a wonderful day finding out about its role during World War 2. Maple class embraced their Roman topic with a Roman day, where the children dressed up and took part in several Roman themed activities. Willow class also visited Bodiam Castle, linking with their learning journey about castles. We also participated in the HASP football tournament where our team performed brilliantly. All the staff and children would like to wish everyone a very Happy New Year and look forward to sharing more of the schools' experiences in the future.

Darren Gurr - Head of School

MAYFIELD GIRLS SCHOOL

Food and Nutrition Lessons at Mayfield Girls

All girls in Years 7-9 have Food and Nut (as the girls fondly call it) lessons every week throughout the year. Our aim is to ensure they have good basic skills to enjoy a variety of different foods and to be able to look after themselves when they leave home. It is really important to us that they enjoy the process of cooking, as well as understanding about making good, healthy food choices. Year 7 starts with knife skills and cooking healthy suppers, afternoon tea dishes and seasonal foods. Year 8 focuses on "Food Around the World" making a variety of international foods and securing their skills by working on

shaping and working collaboratively. Year 9 lessons are based on making them more confident cooks, including baking (which includes the theory of Raising Agents), sauce making, and exploring environmental and ethical issues of food choice. By the time they reach the end of Year 9 they will have had experience of cooking at least 60 different recipes, and more than this if they attend any clubs!

We offer GCSE Food Preparation and Nutrition as an option in Years 10-11 and this gives the girls an excellent opportunity to understand Nutrition, Food Science and to develop their practical skills further. As part of this course, they need to select and prepare, cook and present 3 dishes (including suitable accompaniments) and tidy up within 3 hours. A tricky task for most adults I expect!

Currently, there are no A level Food courses available in the UK. However, we offer some interesting Enrichment courses to our Sixth Form girls. They can either opt for a 12 week "Lunch on a Loan" course to help them get prepared for living independently or they can embark on our year-long "Culinary Skills" course. In this course we have more time to develop some higher-level skills, work on food presentation and use some more unusual ingredients.

We are also involved in the Year 13 LifeSkills program – where girls prepare 4 different dishes within less than 30 minutes – including omelettes, pasta bakes, posh porridge and healthy pot noodles! Just to make sure the girls can survive and make some healthy choices at university!



What Mayfield Girls think of Food and Nutrition Lessons ...

Alice Year 7

"I love F&N because it's really fun to cook a wide variety of foods and it's really good how we get to take delicious food home and eat it! It's also good how we get to learn to wash up correctly too"

Edie Year 7

"I think Food and Nut is important because we are going to know how to cook when we are older for our families and ourselves"



Dora Year 11

"We learn about how different foods benefit us and about cooking techniques"

Tilly Year 9

"Food and Nut is the icing on the cake!"

Sue Smeaton

Annabel wins Young Geographer of the Year Award

Annabel, a Sixth Former at Mayfield Girls, has won the Royal Geographical Society's Young Geographer of the Year competition for her age group. This prestigious international award encourages young people to think creatively and analytically about geographical themes.

The theme for 2023 was 'A blueprint for the future', with entrants being invited to share innovative ideas to address problems in areas such as food production and supply, energy and sustainability, resources, population growth, travel, biodiversity and more.

Annabel's entry proposed a brownprint rather than a blueprint – a plan that involved preserving and regenerating peatlands as a way of solving some of our global challenges. The competition judges said: "Linking to agriculture, carbon storage, hazard reduction and water quality, Annabel demonstrated a deep knowledge of the complex way in which these geographical issues are interlinked – great work Annabel!"



The Addams Family - MGS Production

Finally, on 1st & 2nd February 2024 next year, Mayfield School's next production - The Addams Family School Edition - takes place at the Trinity Theatre in Tunbridge Wells. Tickets are on general sale from 1st January, so local residents would be very welcome to attend (£14 per ticket, £12 concessions).

OUR CHURCHES



sense of wholeness and well-being. So, we wish Shalom to folks in Mayfield and Five Ashes!

We have recently started 'Bring and Share' lunches that happen one Sunday every month at around 1pm at the Church. These have been happy friendly times, and we would love to extend an invitation to YOU to join us - especially if you are going to be on your own for Sunday lunch. You don't need to bring anything - there's always food aplenty. We only plan the dates a few weeks in advance, so please contact me if you would like to join us, and I can let you know when the next one is.

Steve Harland

contact@colkinsmillchurch.org.uk

ST. THOMAS OF CANTERBURY

Thank you to all those who came to the CAFOD coffee morning, battling their way through pouring rain. Thanks to Colkins Mill Church for letting us use their excellent facilities. We had a wonderful time and raised over £1200.

Mass Times at St. Thomas' in January

6.00pm Saturday 6th January

10.00am Sunday 14th January

6.00pm Saturday 20th January

10.00am Sunday 28th January

For further information

visit www.stthomasmayfield.org.uk

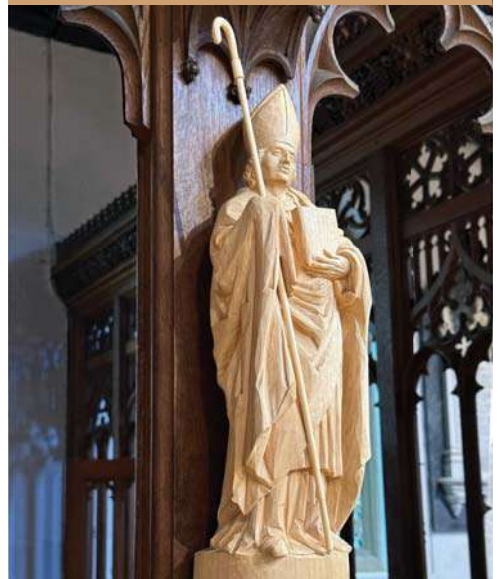
Mary Brentnall

COLKINS MILL CHURCH

We would like to give our best wishes to everyone for 2024 - for peace and blessing. The Bible word for peace, 'Shalom', goes way beyond our normal meaning: it's a picture of how things should be: peace of mind, peace in relationships, peace with God - a real

ST. DUNSTAN'S

The new statue of St. Dunstan by Stephen Moroder, was blessed by Bishop Nicholas. It was commissioned by the Flower Guild in memory of Sheila Humphrey.



ROUND AND ABOUT THE VILLAGES

FIVE ASHES ELECTION

Election of a Parish Councillor for Mayfield and Five Ashes (Five Ashes) on Thursday, 14th December 2023

I, Sarah Garner, being the Deputy Returning Officer at the above election, do hereby give notice that the number of votes recorded for each Candidate at the said election is as follows:

Name of Candidate	TREHERNE, Thomas Michael Justin	WARREN, Rodney Stephen Royce (elected)
Number of Votes	34	80

Janna Todd Parish Clerk

MAYFIELD COMMUNITY & HEALTH CENTRE

The project is now proceeding at pace. We have excellent news in that Wealden District Council (WDC) has confirmed at its December 2023 Cabinet meeting that it is still fully in support of the project and has agreed a budget that enables the Health Centre to be built.

The Joint Project Team is making progress with the key legal documentation which is expected to be signed-off in early 2024. This will then enable the Design and Build contract to be placed shortly afterwards. The first contract activity will be the detailed design, based on the preliminary designs which were used to provide indicative costs for the project.

A meeting with WDC planners in December has confirmed that their requirements should not result in any increase in the budgeted cost for the project. However, they do have some specific requirements for changes to the initial design, which will need to be incorporated into the final design. This means that there will be a delay to the planned public consultation whilst the design changes are made, but these should not impact the overall timescales, and particularly the targeted completion date of end 2025.

Overall, there is a pro-active plan of campaign to ultimately lead to a successful conclusion and a great deal of work to be done over the coming weeks.

For updates, please also visit www.mayfieldfiveahses.org.uk and the village Facebook site.

SIGN THE PETITION TO REDUCE THE SPEED LIMIT ON WELLBROOK HILL AND HELP SAVE LIVES

For almost two decades, the speed limit at Wellbrook Hill has been a major issue for many local residents. Wellbrook Hill is a well-travelled road that passes through both residential and commercial areas, making it a diverse and busy route for commuters and residents alike. Its current speed limit of 50 miles per hour is excessively high for the conditions of the road and the surrounding environment. It is also inconsistent with the road's design, which includes bends, multiple junctions and a pedestrian footpath. Lowering the

speed limit to 40 miles per hour would provide drivers with more time to react to potential hazards, reducing the risk of accidents and further fatalities. Furthermore, the pavement along Wellbrook Hill, which is less than one metre wide in parts, is overgrown and has not been maintained. Residents are forced to walk and cycle mere feet away from fast moving vehicles including large commercial lorries and buses.

East Sussex Highways has been persistent in their view that the speed limit is sufficient for the road. Over the last two decades, we have seen road use and vehicle size increase dramatically. This change of circumstance has meant the limit of 50 miles per hour is no longer safe and is putting both pedestrians' and motorists' lives at risk. Due to the speed limit and narrow pavement, vehicles often cross the solid central line on the road, to ensure they are not too close to pedestrians. The speed limit of the road and pavement width are causing drivers to break the Highway Code to try and ensure pedestrian safety. This needs to change.

Unless action is taken to reduce the speed limit of Wellbrook Hill to 40 miles per hour, further fatalities are likely to occur.

On a recent visit to inspect the site, East Sussex County Councillor Anne Cross stated the thought of walking alongside the road is "horrific".

Sign the petition to reduce the speed limit on Wellbrook Hill and help save lives. You can find it in the Post Office in the High Street and also online at www.Change.org/WellbrookSpeed

Mayfield and Five Ashes Parish Council

THE MAYFIELDIANS' PHOTO OF THE MONTH COMPETITION

This winning photograph for November was taken by Chris Coumbe.

Congratulations Chris. We are now inviting entries for December and January. All entries should be in as high a resolution as possible, ideally 1mb file size minimum. All photographs must be landscape, be of an identifiable location in Mayfield or Five Ashes and be representative of each particular month and ideally sent to **mayfieldians@gmail.com** or posted on the village FaceBook pages and Mayfield In A Frame.

Wellbrook Wines have very kindly agreed to donate a bottle of wine each month to the winner of the competition.



THE MAYFIELD MEDIEVAL FILM

In December, we filmed a gentlewoman's journey through a winter wood. She was accompanied by a retinue of schoolchildren, her trusty companion the Yeoman, and her noble steed, Marble. Along the way they came across Sir Perceval on his quest for the Holy Grail. They gave him momentary shelter, but are they to be trusted?



Huge thanks to all participants for turning up to Batts Wood on a very windy and rainy day. We had representatives from many of the local schools, including Mayfield Primary, Skippers Hill, Heathfield Community College, Sacred Heart and more. We are keenly anticipating our **medieval feast** in Mayfield School Chapel on the afternoon/evening of **Sunday, 11th February**. If you wish to take part in this celebratory meal, in full medieval splendour, please email medieval_mayfield@gmail.com



WATERYARD THEATRE GROUP

The Churches of Mayfield with Wateryard Theatre Group are planning The Mayfield Passion Play, to be performed along the High Street of our historic village on Palm Sunday 24th March 2024.

We need lots of people to help make this exciting project happen. We are looking for 12 'team players' (perhaps members of a local sports team or drama group) to play the Disciples! There would be a few lines for some to learn but plenty of action and help with shepherding our audience along the High Street and back. It won't involve lots of rehearsals, hopefully just 2 or 3 energetic meetups in February and March.

If you'd like to take part as a 'team player' or by singing, being an extra or a steward or helping with costumes or props, get in touch. Let us know what you are interested in by contacting our secretary, **Diana Forrest**, by email: **bolfor@btinternet.com**

MAYFIELD BONFIRE SOCIETY

We are grateful to Colkins Mill Church which kindly agreed to host our traditional Christmas Party for Senior Citizens, where 50 people enjoyed a festive tea and carol singing. The Mayfieldians decorated the Church beautifully and the Scouts made

the cutest table decorations. With Fi Mason on the piano and some MayZing members singing, the party was even better than Tea at the Ritz. We were delighted to be able to hand out cheques at the party for £500 each to Mayfield Youth Band, Mayfield Pre-School and the Scouts, thus sharing the generous donations between the youngest and oldest members of our community.

We had a great turnout for our Quiz at Five Ashes Hall with our regular supporters joined by some new teams of quizzers. Our friends from Chiddingly Bonfire Society won first prize of 6 bottles of wine and we raised over £1,300 towards the Carnival 2024. Next year we will be continuing with our Quiz and also introducing two new fundraising events, a Cheese and Wine tasting at the Rose and Crown in March and Open Gardens in the Warren in June. Wishing Mayfield peace and joy this festive season.

Catherine Hawley
bonfire@gawain.online



The Scouts and Mayfield Youth Band each receiving the generous donations of £500 from The Bonfire Society. Mayfield Pre-School also received a donation of £500.

FILM ON FRIDAY

We're back with two great films to kick off the second half of our season. Both are excellent, independently made films that got next to no release in cinemas. For those who don't like sub-titles, both films are in English!



Credit: Signature Entertainment

A CLEVER WOMAN – 12th January

Two sisters return to their family home after their mother's death. They are planning an unusual memorial for her. As they discuss this, while clearing decades of clutter, they confront their memories of their parents and their relationship. Sexual transgression continues to haunt the house. The dialogue was largely improvised by the cast (which included improv master Josie Lawrence) and the resultant naturalism shines through.

LOLA – 26th JANUARY Shot with vintage cameras and presented as "found footage" on original film. This shooting technique makes the film's historical context entirely believable and allows for the insertion of archive material without any apparent anachronism. Two sisters have built a machine that can intercept broadcasts from the future. It starts as fun, but then WWII starts... This film will leave

you guessing to the last as to how the story will resolve itself.

Our season's programme is available from The Post Office, The House Café, the MAYFACS office, the telephone box and our poster on the school railings. Trailers for all our films are on our website, www.filmonfriday.org, together with interviews with the directors and cast. Email me on filmonfriday@gmail.com, or phone 873310, if you would like to know more, or just come along on one of our film nights. You can follow us on Facebook or on X (formerly Twitter) at [@filmonfriday](https://twitter.com/filmonfriday).
Andrew Ratcliffe Chairman

MAYFIELD HORTICULTURAL SOCIETY

Happy New Year green thumbs, nature enthusiasts and cake lovers! Seedy Saturday is our first community-based Seed Sharing & Social Event taking place on **Saturday, 3rd February** from 10am to 12.30pm in The Scout Hall, Mayfield. Whether you're a seasoned gardener, starting out or simply fancy a slice of cake and a chat, everyone is welcome. Entry is **free** and the event is open to all. What's on offer? Seed Exchange Tables: Bring your surplus seeds or discover new varieties! Refreshments: Fuel up with hot drinks, delicious homemade cakes and plenty of chat. Critters Corner: For our young budding gardeners! Plant Stall: we'll have a few early hardy plants available for sale. Knowledge Sharing: Join us for seed sowing demonstrations. Raffle and Prizes. Bring Your Seeds: Have seeds to spare? Bring them along! Even if you don't, your green spirit is more than enough. Don't forget, commercial seed packets are welcome too as long as they're within "sow by" date! Spread the Green Love:

Invite your neighbours, friends, and fellow High Weald folk. The more, the merrier!

Tessa Crowe

chair@mayfieldhorticulturalsociety.org.uk

MAYFIELD GOLFING SOCIETY

And so to Dewlands for our last meeting of the year in December. Except that it was cancelled, as most of us had predicted (and hoped for?) days earlier. Considering the wet year we have had, to have got this far without a cancellation was nothing short of a minor miracle.

But all was not lost. The December meeting is always followed by a terrific lunch in the Middle House, where the wine flowed and the mickey-taking reached a crescendo. And then one of the more "sociable" AGMs ever.

The most significant announcement was the Player Of The Year who is the player with the best 4 round points total of the year. The winner was Stuart Bourne who unfortunately missed the day. As did the two previous winners. So there is a warning to anyone who wants to take "my precious". Do that and never be seen again!

Next year's list of venues is to be found on the website, and we are due to start on the relatively dry slopes of Lewes Golf Club on Friday, 19th January. For more details go to mayfieldgolfingsociety.com.

MAYFIELD EVENING W.I.

Yet again, Mayfield Evening WI enjoyed a wonderful Christmas party. As we have come to expect, the food was outstanding with so many talented chefs amongst us all. The atmosphere was very festive and after the meal we were entertained by the gifted young singer Rosie-Ann Page and we even managed to join in! Finally,

through our 'one Christmas card for all' scheme and a raffle we raised money to help make Christmas a little more special for those at the Women's Refuge. We meet every second Tuesday in the month (apart from August) at 7.15pm for 7.30pm at Colkins Mill Church, just at the end of the High Street. Our January meeting is 'Travelling at 4 mph' with Fr Michael Asquith. Please feel free to pop in one evening and meet us all. Anyone wishing further information please contact **Chrissie Robinson on 862825**.

MAYFIELD LOCAL HISTORY SOCIETY

(Full programme can be found on the society website at <http://www.mayfieldlhs.org.uk>)

This year, only a few members attended for our Dutch Supper Evening on a cold and frosty evening to consume the plentiful finger food provided and drink the wines. Our thanks and best wishes to all who did venture out.

Friday, 26th January 2024 - WW2 in Sussex

Stewart Angell will be giving a talk on the research he started in 1992 on the role of the Sussex Resistance and its secretive operations. Sussex played a strategic role in establishing a highly secret 'British Resistance' during WWII. Put in place to counter a German invasion of this country,

these men would have sabotaged communications and supply lines to prevent their march on London. Relatively few people have heard of the



Home Guard 'Auxiliary Units' of World War II. Formed in 1940 they were to be the British Resistance, countering a German invasion by delivering guerrilla warfare tactics throughout their localised areas.

Your committee wishes all a prosperous New Year and we look forward to our meeting in January.

Brian O'Connor, Chair 873477; Gill Marengi, Secretary; John Buddle, Treasurer 872229

U3A

What is the U3A?

It is a movement of locally run interest groups. It provides opportunities for people to come together. It is a great way to meet new people and have fun. If you have time for yourself and if you want to further and share your interests, then join Mayfield and District U3A

Find us online: www.u3asites.org.uk/mayfield or contact **Mary Brentnall**
marybrentnallu3a@gmail.com 872289

MAYFIELD BAND

There just aren't enough days in December. Even if you've already smugly done all your shopping, there are still office parties, school concerts, nativities, putting up decorations, and working your socks off to get straight before the break. For a brass band, you can add into the mix band rehearsals, and loads of performances, in my case 13, squeezed into three weeks. And thus, sadly, this year it meant that we couldn't get all the right



players, in the right place, at the right time to put on a full concert. So as a rather pleasant alternative, we combined our senior and youth bands to have a little in-house concert in the band room, principally so that the youngsters had an opportunity to perform, which they love to do, and so that they could experience being in a big band. That gave us a very splendid 30-piece band, and with friends and family as our audience, we had a thoroughly enjoyable and intimate concert. At the time of writing, we still have three carolling jobs to do, which we all very much enjoy, and then at 12 noon on Christmas Eve, we can finally relax. But only briefly, as we are considering a spring concert, when we can call on all of our players, and more. And then before you know it, it will be the Mayfair (May 11th), so onwards and upwards.

The band has now signed up to the Wealden Community Lottery, so do please support us by going to www.wealdencommunitylottery.co.uk and search for Mayfield Band. There are decent cash prizes. Tickets are £1 each, and the draw is weekly. It won't raise piles of cash, but with new pieces of music costing fifty pounds a pop, every little helps.

Mayfield Youth Band

I was so very proud of the youngsters when they performed in the High Street with the Mayfield Girls' choir for the Big Switch On. The girls sang beautifully, and the band played lustily, although I saw a video of them on social media where a couple of stray notes were heard. The children involved have now been dealt with! Don't worry, I'm only joking, because it matters not a jot to me. What matters is that they went out and played to the best of their ability and had fun, and that to me is a win. It's not easy performing in the



freezing cold, in the dark, with an audience right behind you, but they did it, and every time they perform, they learn, improve, and grow in confidence. Mission accomplished.

Beginners welcome - Instruments provided - all ages, 7 to 70 - www.mayfieldband.co.uk

Simon Rudge 872007

simon@mayfieldband.co.uk

www.mayfieldband.co.uk

**ROYAL BRITISH LEGION -
MAYFIELD, FIVE ASHES
AND HADLOW DOWN**



Next Get Together - Soup and Social Lunch – Wednesday, 24th January 2024.

We all enjoyed a successful Soup and Social in November and we are holding another on **Wednesday, 24th January** at the Mayfield Cricket Club, who have again very generously allowed us to use their facilities. As the name suggests this is a very simple format of a choice of

homemade soups and French bread at a modest price of £3 per head. Doors open at 12 noon and the bar will be open until 2.30pm. We hope that this will provide a welcome opportunity for social interaction between members and guests, without the formality of a speaker. Please could you contact Rosemary Lillywhite to confirm your attendance, so that we can ensure we have sufficient soup available! (email: withatwist@btinternet.com or telephone: 872130)

2024 Dates for your Diary

Branch Meetings:

Wednesday, 20th March

Wednesday, 5th June

Wednesday, 23rd October

Summer Garden Party

Following the success of our first garden party last July we are repeating this event on Sunday, 7th July. We will have musical entertainment again at this event.

2023 Poppy Appeal Update

A huge thank you to all our collectors who braved the cold and extreme wet to trudge around the villages and make the collection happen. We are pleased to announce that the cash and cheques collection amounted to just under £4,000. However, this does not include the ever-increasing proportion of donations being made electronically. The figure for this will be known shortly when it will be added to form the grand total raised and when this is known we will update you.

Kevin Swaine 872197 / 07970 787465 - kevinswaine@btinternet.com

BACH'S CHRISTMAS ORATORIO

On Sunday, 19th November, and to a full house, Mayfield Festival Choir and Mayfield Baroque orchestra performed



Bach's Christmas Oratorio under the direction of Jeremy Summerly. There is no review better than the message Jeremy sent to the choir the following day.

"Jauchzet, frohlocket! What a fabulous concert. Jonnie (Jones) and I were discussing whether that was the best one I've done with MFC. I think it probably was, and it was certainly the one where the choir nailed absolutely every movement. The consistency was amazing. The players were even more impressed than usual and the soloists were pretty much agog most of the time. I can't tell you how fresh it sounded from where I was standing. And it was lovely for me to stand in front of such an accomplished orchestra. It lifted the whole thing. It was just such a joyous experience."

The choir is so fortunate to work with musicians of the calibre of Jeremy and Andrew Benians and we are hugely grateful to them. This time we also thank Simon Tayler who guided us through the maze of German language pronunciation. However, putting on events of this size is only possible because of the large number of people from the village who regularly turn out to carry chairs, install the staging, act as stewards and run the bar. To you we are most thankful of all!

NEWS FROM NUS GHANI – MP FOR WEALDEN

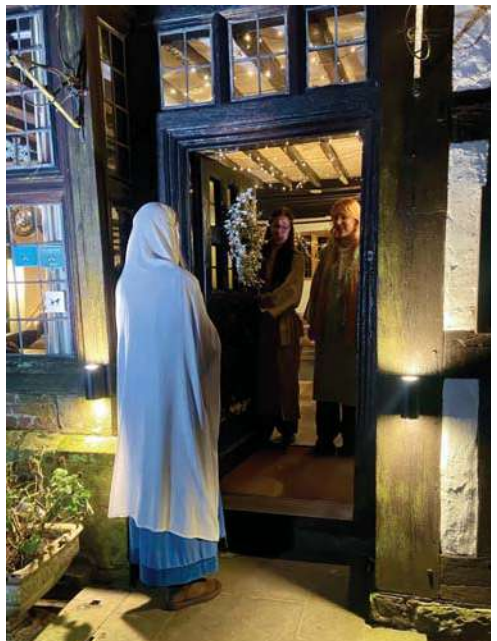
Happy New Year! I hope that you had a chance to relax and refresh over the festive period and are ready to fully embrace 2024. Winter is a beautiful time in Wealden, especially with a bit of frost in the morning making everything sparkle. However, in the shadows of all the socialising and festivities enjoyed in December, January can seem very different and bring feelings of isolation and loneliness, which can weigh heavily on our mental health. It is often the simple steps such as a chat with a family member, friend or a neighbour that can make a world of difference but please know that there is further support available in all corners of Wealden and don't be afraid to reach out if you need it.

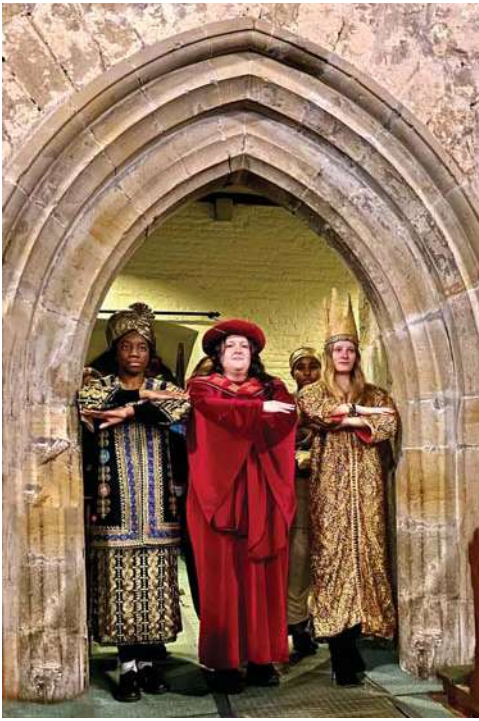
MAYFACS are an amazing resource, providing a huge range of support including activities for residents of all ages as well as help with transport locally. In Wadhurst, the wonderful Carillon Cottage is an invaluable community hub, offering advice, support and services for every age group and in Hailsham, the Wealden Citizens Advice team are a fantastic source of free, confidential and impartial advice.

I'm also pleased to be supporting the Mayfield and Uckfield Sheds, which are great projects offering a supportive and creative opportunity to share skills to repair or upcycle items that can be re-used by the community, while helping to tackle loneliness and isolation. I'm incredibly grateful for all the work that our charities and their volunteers are doing, and I look forward to continuing to support them in 2024.

Nus Ghani

THE LIVE CRIB Organised and Performed by Mayfield Girls School





LATE NIGHT SHOPPING



Ian Parker with Mark Delstanche



Five Ashes Primary School



Mayfield Primary School



Mayfield Youth Band and Mayfield Girls

LATE NIGHT SHOPPING



PARISH COUNCIL NEWS

First of all, the Parish Council would like to send best wishes to all residents for the New Year! Due to the earlier Newsletter deadline this article was written before the December Parish Council meeting, therefore the resolutions for budget approval and the precept had not taken place. This will be reported in the February Newsletter.

Adult Gym Equipment

Thank you to the residents who emailed the office to inform us of their opinion on the installation of adult gym equipment at Court Meadow. This was discussed at the Community Development Committee meeting at the beginning of December 2023. Disappointingly, only eight emails were received providing the view of ten residents and two were against the installation of the equipment.

Initial investigations roughly determined that a selection of six pieces of equipment costs in the region of £25k. The preferred location was near the swings and slide at the top of the recreation ground so any ground works would be costly as it would need to be levelled. It was therefore decided that the provision of equipment should be reconsidered after the Community Centre has been developed.

Antisocial Parking

Several complaints have been recently received of antisocial parking. There have been complaints of cars parked on double yellow lines at the entrance to Criers Lane from the A267 in Five Ashes. This is hazardous as if there is a queue of traffic trying to turn out of the lane causing a queue on the A267. there is no access into the lane



Vehicles are also parking on the Queensmount and Criers Lane. verge at the junction of Not only is this causing the verge to be churned up creating an eyesore but it is also blocking sightlines of vehicles driving on the wrong side of the road past the illegally parked vehicles in Criers Lane.

Complaints have also been received of vehicles parked on double yellow lines at the west end of the High Street opposite the junction with West Street. This is very hazardous for vehicles trying to turn out of West Street towards Station Road as those travelling towards the High Street are on the wrong side of the road passing and cannot be seen. There have been several near misses.

Please be considerate when you park and take time to think about whether your vehicle is causing a hazard or blocking sightlines. The double yellow lines are there for a reason.

Temporary Road Closure Warnings

Balfour Beatty, working in partnership with East Sussex, will be carrying out targeted patch repairs in Station Road to help improve the condition of the road surface. This is scheduled on Tuesday, 9th January and Wednesday, 10th January and the road will be closed to through traffic between 8pm and 6am. A diversion route will be in place via High Street, Tunbridge Wells Road, A267, Stone Cross, Station Road and vice versa.

If you need vehicle access, please discuss this with the team on site to see if this is possible. Please bear in mind there will be delays whilst the area is made safe and your vehicle is escorted by site marshals.

Scotsford Hill is scheduled to be closed on 19th January from the junction with Witherenden Road to the junction with Piccadilly Lane to allow BT Openreach to carry out further apparatus repair works. Advance warning signs will be placed on site advising of the actual date of the works.

East Street is scheduled to be closed from 22nd January to 26th January from the junction with Scotsford Hill to the junction with Coggins Mill Lane for Southeast Water to carry out apparatus repair works.

Coggins Mill Lane is scheduled to be closed on 16th February from the junction with Lake Street to the junction with Fletching Street to allow BT Openreach to carry out further works at this location.

Pledge To Clean Up Wealden Rivers

A motion has been passed by Wealden Councillors to investigate river damage and preservation in Wealden's rivers and waterways. They requested a working group be set up by Wealden's Overview and Scrutiny committee to study river damage and preservation, silt run off in developments close to rivers, and to work with the Environment Agency to reduce silt run off into rivers. The motion also called for a meeting to be held between the Environment Agency, Wealden District Council officers and the Chair of the Overview and Scrutiny Committee to look at the state of the district's rivers, and an audit to be produced by the Environment Agency regarding river damage and best practice to protect wildlife.

The overall aim is to have healthier rivers by the end of the current term in May 2027 and have a long-term plan on river restoration using the Local Plan and the Council Strategy as vehicles for progress. It also looked at working closely with relevant stakeholders to clean up the rivers and stop third party contaminants reaching waterways. 30% of the rivers and water bodies in and around Wealden are apparently in poor or bad condition, which is above the national average of 20%. Only one, Arlington Reservoir, is rated 'good' by the Environment Agency.

Immediate Justice Grant Funding For Providers

After being selected as one of ten trailblazer areas to deliver Immediate Justice (IJ) in Sussex as part of the Government's National Anti-Social Behaviour (ASB) Action Plan, Sussex Police & Crime Commissioner Katy Bourne and the IJ Taskforce have seen the scheme become fully functional in Brighton & Hove, with over 40 cases managed so far across the county

By using Out of Court Disposal options, Immediate Justice will see offenders (mainly of ASB) undertake visible, practical and meaningful activities, such as graffiti removal, litter picking or maintaining public spaces, swiftly repairing the harm and damage they have caused.

The Immediate Justice taskforce is seeking applications to identify providers who have the capability and capacity to identify and deliver reparation in the community. Providers will liaise and communicate with offenders and victims, as well as arrange and supervise suitable reparation activities in the community.

The IJ Taskforce welcomes applications from a broad range of providers including local services, community hubs and

rehabilitation programmes to ensure the scheme can take place across the wider county. To find out more and how to apply visit: <https://www.sussex-pcc.gov.uk/about/news/>

Keep Warm and Well in East Sussex

As it gets colder, Health and Social Care News East Sussex is encouraging you to wrap up and do all you can to stay warm and well over winter. If you're struggling to stay warm at home, then do look at the Warm Home Check Service, and how it can help people stay warm at home for less. You can also get tips and advice on keeping warm and well <https://warmeastsussex.org.uk> and sign up for free cold weather alerts <https://coldalert.info/about/>

Cold Alert is a FREE service provided by the Sussex Air Quality Partnership (Sussex-air) and funded by East Sussex Public Health. The service is operational between **1st November and 31st March**, providing free severe cold weather warnings for individuals with respiratory and cardiovascular conditions, parents of young children, carers and healthcare professionals.

The Cold Alert service provides:

FREE severe cold weather alerts directly to you and/or your carer or health professional by text, voicemail or email over the winter months from November to March
Information about when, where and how long a period of severe cold weather event is forecast
Advice on what to do to prepare for severe cold weather events

A reminder of the January waste collections:

Usual collection day:	Revised collection day:
Monday 01 January	Wednesday 03 January
Tuesday 02 January	Thursday 04 January
Wednesday 03 January	Friday 05 January
Thursday 04 January	Saturday 06 January
Friday 05 January	Monday 08 January
Monday 08 January	Tuesday 09 January
Tuesday 09 January	Wednesday 10 January
Wednesday 10 January	Thursday 11 January
Thursday 11 January	Friday 12 January
Friday 12 January	Saturday 13 January

Parish Council Meetings

The meeting schedule on the website: <http://www.mayfieldfiveashes.org.uk/> shows this month's Council and Committee meetings as well as agendas, minutes of meetings and other meeting documentation.
Janna Todd, Parish Clerk
Old Manor House, High Street, Mayfield
TN20 6AL
Telephone 873784 E-mail: clerk@mayfieldfiveashes.org.uk

NEWS FROM FIVE ASHES

FIVE ASHES HORTICULTURAL SOCIETY

A Happy New Year to you all from the Society. Our new Horticultural Society year has already started. We had a sub-committee meeting in early December to review our Show Schedule. Remembering our 2023 Shows, and the notes I took along with the Judges' comments, and then applying these to 2024 took some time but we got there.

The next jobs, following a full committee meeting this month, are to get the changes to the printers and proof-read them.

Meanwhile, the garden looks too waterlogged to grow anything!

Graham Playfoot 01825 830511

REFLECTIONS ON 2023

A year of violence and war,
global warming and more.
We can no longer ignore
what the future has in store.

We are the lucky ones.
We have secure houses, safe streets,
warm clothes, shoes on our feet,
clean water and enough to eat.

We watch for swallows in the skies,
not drones or deadly missiles.

Our concerns are slight, trivial,
not about survival.

We live and laugh and eat,
go out, meet family and
friends. Celebrate events,
enjoy films and talks,
play sport and go for walks.

There is no other way.
We only have today.

Sue Marshall

MAYFACS (Mayfield & Five Ashes Community Services)

London House, High Street,

www.mayfacs.org.uk

HELPLINE 873888 (answer phone
MAYFACS OFFICE OPENING
Wednesday between 10am - 1pm

number is monitored Monday to
(Office is reopening on Wednesday 3rd January 2024).



Mayfield, TN20 6AQ

system)
TIMES: Monday, Tuesday and
every week. Helpline phone
Friday only._

MAYFACS OFFICE info@mayfacs.org.uk

BANK DETAILS: (for donations, payments of trips and activities)

Mayfield & Five Ashes Community Services (MAYFACS)

Account No 00029924 Sort Code 40-52-40

JANUARY NEWS

MATINEÉ FILMS Our specific MAYFACS Programme of films are open to EVERYONE to attend. No booking necessary! Bring friends or family or come on your own and enjoy an afternoon of entertainment and refreshments. Doors open at 1.30pm for a prompt start at 1.45pm. Admission is £6 on the door. Transport is available from Mayfield at £3 per person return. Please pick up a flier from our office or around the village for more information. Please note, the MAYFACS Matinée Films run a different programme to the Film on Friday evening series.

January 12th: The Lost King

January 26th: The Railway Children Return

The next Repair Café will be at MAYFACS Shed on Saturday, 27th January 2024 10am – 1pm.

This is a chance to visit the Repair Café and see the activities we have on offer, as well as to come and join our volunteer repairers for a slice of cake and drink if you are passing by. Anyone is welcome – and you do not even need to bring a repair to pop in! If you do bring a repair, please note that we aim to repair items on the day as much as possible, so please do not bring restoration projects. Donations are gratefully received for repairs.

MAYFACS Shed Quiz: Saturday 3rd February 2024

Five Ashes Village Hall - 7.30pm start, £10 per ticket including nibbles. Licensed bar. Tickets now on sale at BURNETTS – get yours quickly before they sell out!

MONTHLY TRIPS – NEW 2024 Trips Schedule now released!

Monthly Trip places will be allocated on a first come, first served basis. Please email or pop into the office to secure your place! If you would like to attend any of our trips but need some financial support, please talk to us in confidence.

Saturday, 27th January 2024

Rotherfield Players present Beauty & the Beast Pantomime £20

Thursday, 15th February

Lakedown Taproom and Brewery tour, Burwash Weald £10

Thursday, 21st March

Ashford Outlets Shopping Centre £10
April Trip TBC

Thursday, 16th May

South Brockwells Farm and Shop and Café, Uckfield £10

Thursday, 20th June Farleys House and Gallery, Chiddingly £32

Thursday, 18th July

Busi Jacobsohn Vineyards tour and tastings, Eridge £36

Please visit our website www.mayfacs.org.uk for updates of weekly activities or contact us at the MAYFACS Office on 873888. You can also join our monthly eNewsletter mailing list to get full details on everything that we do to support our community by contacting clare@mayfacs.org.uk.

MAYFACS Weekly Activities

MON

Yarners

Chat and knit, sew and crochet in Sew Inspired shop in the High Street, £2 per person, 1.30-3.30pm. No need to book.

TUE

Tuesday Chat

A chance to meet up and chat with refreshments in Colkins Mill Church, Station Road, Mayfield. 2-3pm. £2. Every Tuesday apart from the first Tuesday of the month. No need to book.

TUE

Tuesday Afternoon Club

First Tuesday of the month in Colkins Mill Church 2-4pm £3 including a Speaker, raffle and a light afternoon tea. No need to book. Please bring a small prize to share for the raffle.

Wed

Wednesday Chat

A chance to meet and chat with refreshments, 2-3pm in Five Ashes Village Hall,. £2. Every 2nd and 4th Wednesday. Transport available. No need to book. (Speaker on 4th Wednesday).

Wed

Writing for fun!

A monthly group on 3rd Wednesday of each month at 10am – 12pm in London House. £3 including refreshments.

Wed

Little Munchkins Baby & Toddlers Group

For all carers, parents and grandparents and under fives. Every Wednesday, term time only in the Scout Hall 9-11 am. £3 per family. Refreshments provided.

Thur

Community Café Crowborough

A dementia friendly group for people to come together to enjoy an activity and refreshments. Last Thursday of the month. 2-4pm. Chaperoned transport available from Mayfield.

Thur

Poetry

1st Thursday of the month 11-12.30 Coach House Cottage, Royal Oak Mews £2.

Thur

Middle House Lunch

2nd Thursday of the month by invitation only on a rota basis. £12.50 for senior citizens living alone. Subsidised 2 course meal.

Fri

Games/Scrabble/Cribbage

3rd Friday of the month 2-4pm £3 at London House, bring a game or join in with some friendly games.

Fri

MAYFACS Film Club (OCT-MAR)

Five Ashes Village Hall. See attached programme of films. 1.45-4pm £6. Transport from Mayfield £3



DATES FOR YOUR DIARY

REGULAR WEEKLY GROUPS

Monday	Mayfacs Shed - mixed group	Mayfacs Shed 9.30am -12.30pm
	Art Club	Five Ashes Village Hall 10-12.30pm
	Yarners	Sew Inspired, High Street 1.30 – 3.30pm
	Chair-based yoga	Scout Hall 10 - 11am Not Aug/Dec/April
	Yoga	Scout Hall 6.30 – 7.45pm
	Ideal Performing Arts	Five Ashes Village Hall 6.00 – 8.00pm
Tuesday	Table Tennis Club	Five Ashes Village Hall 8.15-21.45pm (Sept-May)
	Pilates	Five Ashes Village Hall 8.30-9.30am
	Chair-based yoga	Scout Hall 10 - 11am Not Aug/Dec/April
	Mayfacs tea & chat	Colkins Mill Church 2 - 3pm - not 1st Tuesday of month
	Circle Dance	Scout Hall 2.30 – 4.30pm
	Pilates	Five Ashes Village Hall 6.15-7.30pm
Wednesday	Pilates	Five Ashes Village Hall 9-10am
	Discofit Gold - Fitness Dance	Five Ashes Village Hall – 10-11am
	Mayfacs Shed - Men Only	Mayfacs Shed 9.30am -12.30pm
	Mayfacs Baby & Toddlers Group	Scout Hall 9-11am (term-time only)
	Creative Social	Sew Inspired. High Street 10am – 1pm
	Mayfacs tea & chat	Five Ashes Village Hall, 2 nd and 4 th Weds. 2 – 3pm
	Studio Dance	Five Ashes Village Hall – 18.50-19.50pm
	The Rose & Crown Quiz	Rose & Crown, Fletching Street, 7.30pm
	Mayzing Choir practice	Five Ashes Village Hall: 8.00 – 10.00pm
	Mayfacs Shed - mixed Group, gardening session	Mayfacs Shed, 9.30am - 12.30pm
Thursday	Pilates	Five Ashes Village Hall – 10.30–11.30am
	Baby Explorers	Five Ashes Village Hall – TBC
	Mayfield Handbell Ringers	London House, 4-5.30pm
	Pilates	Five Ashes Village Hall – 5-6pm
	Cogs – School Years 4-6	Colkins Mill Church 6.30-8pm
	Five Ashes Rifle Club	Five Ashes Village Hall – 7-9.30pm Sept-April
	Happy Tai Chi	Five Ashes Village Hall – 7-8pm
	Art Class	Five Ashes Village Hall – 9.30-12pm
	Yoga	Scout Hall 10 – 11.15am
	Pre & Post Natal Exercise Class	Scout Hall 11.30am
Friday	Junior tennis coaching	Mayfield Tennis Club - 3.30 onwards
	Ideal Performing Arts	Five Ashes Village Hall 5.00 – 8.00pm
	Mayfield Band rehearsal times: The Bandroom, Court Meadow Beginners from 5pm; Junior group 6-6.30pm; Youth Band 6.30-7.30pm; Senior Band 7.45-9.45	
	Ideal Performing Arts	Five Ashes Village Hall – 5-8pm
	Cogs – School Years 7-9	Colkins Mill Church 7-8.30pm Year 10s welcome from 7.45pm-9.30pm
Saturday	Saturday Picnickers	London House 12.30-2.30pm

JANUARY 2024

Saturday	6	Christmas Tree Collection	Court Meadow 10am-1pm
Tuesday	9	Mayfield Evening W.I.	Colkins Mill Church 7.15pm
Friday	12	Mayfacs Matinée Film	Five Ashes Village Hall 1.30pm
Thursday	18	Mayfield U3A General Meeting	Five Ashes Village Hall 2pm
Friday	19	Mayfield Golfing Society	Lewes Golf Club
Wednesday	24	RBL Soup & Social	Mayfield Cricket Club 12 noon
Friday	26	Mayfacs Matinée Film	Five Ashes Village Hall 1.30pm
Saturday	27	Repair Café	MAYFACS Shed 10am – 1pm
Saturday	27	Mayfacs Pantomime Trip	Rotherfield Players

FEBRUARY 2024

Thursday	1	Wadhurst & District Flower Club	Stonegate Village Hall, 1.45pm
Thursday	1	Mayfield Girls School - Addams Family School Edition - play	Trinity Theatre, Tunbridge Wells
Friday	2	Mayfield Girls School - Addams Family School Edition - play	Trinity Theatre, Tunbridge Wells
Saturday	3	Mayfield Horticultural Society Social & Seed Swap	Scout Hall 10am-1pm
Saturday	3	Mayfacs Shed Quiz	Five Ashes Village Hall 7.30pm
Tuesday	13	Mayfield Evening W.I.	Colkins Mill Church 7.15pm
Thursday	15	Mayfacs Trip	Lakedown Taproom & Brewery
Thursday	15	Mayfield U3A General Meeting	Five Ashes Village Hall 2pm

MARCH 2024

Thursday	21	Mayfacs Trip	Ashford Outlets Shopping Centre
Sunday	24	Wateryard Theatre Group	Passion Procession High Street



GA CARPENTRY & KITCHENS

• SINCE 1997 •



Since 1997 we've specialised in all aspects of carpentry and joinery. We're experts in bespoke wardrobes/cupboards. Kitchens, flooring, windows, doors, loft conversions, period and modern property works.

Checkatrade approved, full project management and full public liability.

For a free no obligation quotation please call us on **07977 055637**
enquiries@gacarpentry.co.uk



www.gacarpentry.co.uk

mfanadvertising@gmail.com Tel: 07990 880099

GABRIEL INTERIORS*HAIR STUDIO*BURNETTS	p 2
CARPENTRY*GARDEN DESIGN*BESPOKE CURTAINS	p 39
FLORISTRY*ARTISAN DESIGN*OPTICIANS	p 40
TRAVEL CONCEPT *HOLIDAY LETS*CATERING	p 41
TUNBRIDGE WELLS EYE CENTRE*OPTICIANS	p 42
SOLICITORS*FURNITURE RESTORER*WILLS	p 43
FUNERAL DIRECTORS*WEALDEN FUNERALS	p 44
GOOD COMPANY*HOME CARE *LIVE-IN CARE	p 45
LOCAL CARER *YOGA*CHAIR YOGA	p 46
*PODIATRIST*DENTIST*PHYSIO*OSTEOPATH	p 47
TREE SURGEON* MAYFACS SHED*TREE CARE	p 48
JF LOGS*APPLE TREES*GARDEN WORKS	p 49
CAR REPAIRS*LOCKSMITH*TAXIS*STORAGE	p 50
DECORATOR*IT SERVICES*ELECTRICIAN*DIY	p 51
POOL SERVICES*SWEET*CARPENTER*PLUMBERS	p 52
PEST CONTROL*PROPERTY CARE*PRESSURE WASH	p 53
LAZY FOX* GLYNDE * MAYFIELD FESTIVAL 2024	p 54
SCARLETT'S*LAMBERT & FOSTER. *NEW	p 55



**Philip
Barnes**
GARDEN DESIGN

A local professional Garden Design service creating inspirational gardens.

My services include:

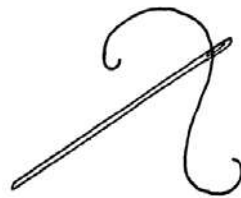
- Full Garden Design
- Planting Plans
- Maintenance Advice



07971469909

philip@philipbarnesgardendesign.com
www.philipbarnesgardendesign.com

The Hand Sewn Home



Bespoke
Curtains
Roman Blinds
Cushions

Anya Marsh
[@thehandsewnhome](https://www.thehandsewnhome.co.uk)
07795410093

Sussex Cutting Garden



Homegrown Beautiful Flowers

Bespoke floristry for
Weddings, Farewells and all events
Also Gift Bouquets & DIY flowers

www.sussexcuttinggarden.co.uk

caroline@sussexcuttinggarden.co.uk

Call 07951 161548

Coggers Cross, Horam TN21 0LG

Visits by appointment only

THE
ARTISAN DESIGNERS



Decoupage with a Twist
Commissions welcome



Please call for opening times

Brigitte 07855 385 824

brigitte.theartisandesigners@gmail.com



The Artisan Designers Ltd
at The Bull House Studio
off Lake Street Mayfield TN20 6PR



Melina Joy
OPTICIANS

59 High Street
Heathfield
01435 868181
www.melinajoy.co.uk

Wherever you're looking to travel,
we're with you all the way.



Bianca and Tracy are your 'go-to' agents in Mayfield for where 'to go'. Our passion is to create unforgettable holiday experiences from start to finish, tailored to suit your individual needs and expectations, without the stress of searching online.

PEACE OF MIND • ATOL PROTECTED • SAVE TIME & MONEY

The Travel
Concept

Start planning your journey today

01435 866 555

ask@thetravelconcept.co.uk



The Travel Concept



@TheTravelConceptGirls



Sussex Country Getaways

Allens Farm Oast - Sleeps 8

Allens Farm Loft - Sleeps 2

www.sussexcountrygetaways.com

E: allensfarmsussex@gmail.com



@allensfarmoast



@allensfarmsussex

Elm Green

creative, seasonal food



*Simple, inviting food,
bursting with flavour &
stylishly presented for
Canapé Receptions,
Garden Parties, Buffets,
Weddings, Dinner Parties,
Family Weekends &
Events*

**My creative menus are inspired by
the seasons and feature local,
organic produce**

Please contact Sarah Litchfield

07753 821120

sarah@elmgreen.co.uk

www.elmgreen.co.uk



Tunbridge
Wells
Eye
Centre



**NOW
OPEN**



Tunbridge
Wells
Eye
Centre

7 Vale Avenue
Tunbridge Wells
TN1 1DJ
01892 240 200



www.tunbridgewellseyecentre.co.uk



ARTHUR HAYES
EYECARE CROWBOROUGH

Comprehensive
eyecare in
Crowborough

NHS EYE TESTS

HANDMADE FRAMES
& QUALITY LENSES

SUNGLASSES

CONTACT LENSES

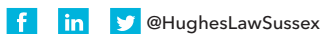
LOOK FABULOUS, SEE BEAUTIFULLY



ARTHURHAYESEYECARE.CO.UK | 01892 664826
CROWBOROUGH CAMPBELL HOUSE, CROFT RD, CROWBOROUGH TN6 1DR

Hughes

SOLICITORS



Putting your interests first

- Private client services
- Wills and trusts
- Estate administration
- Residential property

19 High Street, Heathfield TN21 8LU

01435 890101

info@hugheslaw.co.uk

www.hugheslaw.co.uk

Peter d'Aguilar

FURNITURE RESTORATION

**Repairs & renovation
French polishing
Furniture valeting service**

**20 years' experience
Free estimates
Based in Mayfield**

01435 873298 / 07555 253432

peterdaguilar@talk21.com

Is your
Will
up to date?

Local Will Writing Service

We provide a Professional Will Writing Service in the comfort of your own home at a time convenient to you.

For a **FREE** Will Review & help with all types of **Wills, Trusts, Lasting Powers of Attorney and Probate.**

CALL OUR LOCAL SPECIALIST

Tony Nunn
0800 1698038



Institute of Professional Willwriters

EKW
LEGACY PLANNING
www.ekwlegacyplanning.co.uk

*"You were such a comfort
to us when we needed it."*

When someone dies there must be time to grieve and reflect on the life we've lost - yet there are people to inform, forms to sign and a funeral to arrange. It's comforting to know that a local, independent and personal funeral service is available at the end of a phone - 24 hours a day.

- Memorial Masons
- 24 hour service
- Pre-paid funeral plans
- Bereavement Support Group
- Member of The National Society of Allied & Independent Funeral Directors

London Road, Crowborough
East Sussex, TN6 2TT

E - information@testerandjones.co.uk
W - www.testerandjones.co.uk



Let us hold your hand...

Independent, local funeral services supporting families throughout Heathfield, Crowborough, Uckfield & Wealden.

We believe that the most important people are your loved ones, and we would be honoured to look after them. We pride ourselves on providing compassionate, respectful and affordable funeral services - whatever your chosen funeral type.



Heathfield: 01435 868844 | Crowborough: 01892 487435
hello@wealden-funerals.uk | www.wealden-funerals.uk



Do you know someone over 60 who would like some support to get out and about to enjoy their hobbies with friends?

the
**Good
Company
People**

The Good Company People is a non profit set up to help those over 60 experiencing social isolation, many of whom are living with mild cognitive impairment or dementia to enjoy independent, fulfilling, lives for longer. We provide a suite of free and paid for respite and support services to respond to your changing needs.

- A free concierge service to support carers through the dementia journey with on-hand dementia support and expert advice.
- A free monthly open-house Good Company activity session and cream teas.
- A monthly dementia friendly Supper Club and sing along in Crowborough.

We also support self-employed Hosts to provide Good Company sessions for small groups in Hosts' own homes across Crowborough and surrounding villages. Prices vary, but start at £11 per hour for 5 hours. Good Company can be enjoyed in groups of up to 5, or local day trips for up to 3 guests. A Good Company session includes transport, activities, a nutritious meal and refreshments.

Please get in touch for an informal chat to explore if Good Company could help you.



07472 564 519



hello@thegoodcompanypeople.org



www.thegoodcompanypeople.org



ELITE HOME CARE



SERVICES

- Hypertension monitoring
- Phlebotomy
- Wound dressings/suture removal
- General companionship
- Morning routine assistance
- Guidance taking prescribed medicine.
- Meal preparation
- GP and hospital visits

ABOUT

- Service provided by a Registered General Nurse
- Dedicated to caring for the community
- Assistance and care provided within 48 hrs.
- 2-4 hourly visits



For more information, please contact Anna Agnew RGN

07880 791002

Annaagnew26@gmail.com


the **BESPOKE CARE** company
providing care • enabling independence

Live-in Care

We are a local family run agency specialising in live-in home care.

We offer a realistic alternative to residential care, providing our clients with one to one live-in care in the comfort and security of their own home.

We are based in Tunbridge Wells and provide live-in services to the local areas of Kent & Sussex.

Tunbridge Wells 01892 518400

www.bespokecarecompany.co.uk

LOCAL CARER

Do you, or someone you know, need an extra pair of helping hands?
I'm a Carer with over 20yrs experience, living in Buxted, & happy to travel further afield.
I have excellent references too, that I'm happy to share...



I can help with:

- * **Personal care**
- * **Shopping**
- * **Cooking**
- * **Medicine reminders**
- * **Light housekeeping**
- * **Errands**
- * **Companionship**

...& many other duties



If you feel I could be of assistance, then please don't hesitate to contact me on:

07779 - 353587



Yoga

SCOUT & GUIDE HALL

Monday 6.30pm-7.45pm

Friday 10.00am-11.15am

sarah@sarahratcliffeyoga.co.uk

Registered British Wheel of Yoga Teacher

01435 873310, 07721 009549



CHAIR-BASED YOGA

SCOUT & GUIDE HALL

MONDAY 10-11am

TUESDAY 10-11am

sarah@sarahratcliffeyoga.co.uk

Registered British Wheel of Yoga Teacher

01435 873310, 07721009549

MAYFIELD PODIATRY



High Street, Mayfield
www.mayfieldpodiatry.co.uk
01435 873848

Routine Footcare – nails, corns & callus
Neurological & Vascular Assessments
MSK & Gait Observations
and Diabetic Foot assessments
Home visits available



Mayfield Podiatry
High Street
Mayfield
East Sussex TN20 6AQ
01435 873 848



WE ARE TAKING ON NEW PATIENTS

Brand new state of the art surgery up and running NOW!

To get booked in with one of our dentists or dental hygienists, please give us a call on 01435 873070

Or send an email to info@woodhilldental.co.uk



Treatments Available at Woodhill Dental Centre:

- Facial Aesthetics
- Invisalign
- Composite Bonding
- Teeth Whitening
- Initial/Routine Examinations
- X-Rays
- Hygienist
- Extractions
- Dentures
- Restorative Treatments
- Emergency Appointments

Woodhill Dental Centre | Station Road | Mayfield | TN20 6BW

The Joint and Back Clinic Nigel Kettle Registered Osteopath

28 Years Experience. Osteopath
located just outside Mayfield Village in
Roselands Avenue with Easy Access
and Free Parking

Osteopathy, Acupuncture, Injury
Rehabilitation, Electro-Therapy



Call **07939 129626**
www.jointandback.com

Chartered Physiotherapist Katharine Lees-Jones MCSP

Home visits only

- Musculo-skeletal problems
- Rehabilitation after orthopaedic or general surgery
- Muscle stiffness/aches and pains
- Loss of mobility /balance/ confidence

I also offer Soft tissue massage and Dry
Needling (Western Acupuncture based
on physiological principles)

Please contact for an informal chat:
01435 884141 or 07765 200423



Certified Arborists Specialising in:

Tree Surgery - Tree Management Stump Removal



info@acetotaltreework.co.uk



07715 231 268

D.J. CASEY TREE CARE

TREE SURGERY

HEDGE CUTTING

GARDEN MAINTENANCE

All tree work undertaken –
from pruning to felling,
hedges tamed and maintained.

NPTC Qualified and Fully Insured
with over 20 years experience.
All work carried out professionally and
to the highest standard.



For all your tree and garden maintenance needs

call **Darren Casey** on

01435 812005 or 07798 793176



MAYFACS COMMUNITY SHED

Merrieweathers Farm, East Street, Mayfield TN20 6RJ

The MAYFACS Shed and Community Garden is an opportunity for anyone to come along, meet some friendly people, work in the workshops or outdoor spaces on your own personal projects or community projects.

WEEKLY SESSIONS

MONDAY (Mixed Group) 9.30am - 12.30pm

WEDNESDAY (Men's Group) 9.30am - 12.30pm

THURSDAY (Mixed Group) 9.30am - 12.30pm

REPAIR CAFES



Fourth Saturday of every month (except August and December) at MAYFACS Shed (Refreshments available) 10am - 1pm

Bring your repairs along, join us for tea and cake, and get to know our Repairers! You are also welcome along without repairs! Volunteer Repairers always welcome!



For more information

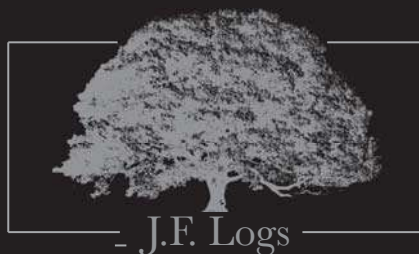
Email us on theshed@mayfacs.org.uk

Call MAYFACS on 01435 873888

Visit our website www.mayfacs.org.uk/the-shed

or Follow us on Facebook

www.facebook.com/MayfacsShed



J.F. Logs
Seasoned Firewood
covering all sizes
Contact James Firrell on: 07817 837048

Herons Folly Garden



Apple Trees
and
Friday Veg Stall
8:00am – 12:00pm
May through December

Apple Juice, Honey, Cider Vinegar, Vegetables
Available Middle House Deli



All products are organic
www.heronsfollygarden.co.uk
(01435) 873608

Cobweb

GARDENWORKS

We offer professional,
comprehensive
garden solutions &
maintenance services
Please contact Richard:

07852 549005
info@cobwebgardenworks.uk
www.cobwebgardenworks.uk



ALWAYS IN SEASON



01435 873568

wellbrook
motor services

Wellbrook Motor Services offers complete service and maintenance packages for your car. Courtesy car or local collection/delivery are available to your home or place of work.



Servicing

All manufacturers and models incl. Hybrid & EV



Air Conditioning

Re-gas (R134A & R1234YF), service & repairs.



MOT Testing station

Same day MOT's & no re-charge fees



Computer Diagnostics

Diagnosis can normally be done while you wait



Repairs

- Tyres
- Clutches
- Exhausts
- Shock Absorbers
- Brakes
- Batteries
- Accessories

Opening hours: Mon-Thurs: 8:00 - 17:30
Fri: 8:00 - 17:00
Sat: Available by Appointment

www.wellmotor.co.uk



KEYMARK
LOCKSMITHS

For All Your Security Needs

- 24hr Locksmith Service
- No Call Out Charge
- Domestic & Commercial
- Lock Fitting (*Insurance Approved*)
- uPVC Door & Window Lock Specialists
- Garage Door & Lock Repairs
- On Site Key Cutting (*We come to you*)

Call Danny

01435 868493

07759 800694

Email: danny@keymarklocksmiths.com

www.keymarklocksmiths.com

Practical members of
Checkatrade.com
Where reputation matters



Hailsham Road, Heathfield, East Sussex TN21 8AE

Self Storage in Mayfield

6m x 2.5m (30cbm)
3mx2.5m (15cbm)
(Approx. capacity)

neale.robinson@wellbrookfarm.co.uk

07711 410476

Please email or phone for price and availability

HEFFLE CARS

MAYFIELD & HEATHFIELD

PRIVATE HIRE & TAXI
AIRPORTS-LONDON-DOCKS

LONG DISTANCE - COURIER SERVICE
CREDIT & DEBIT CARDS ACCEPTED
FAMILY RUN BUSINESS for 29yrs

TEL: 01435 867287

Email: kathi@hefflecars.co.uk

Proprietor: DAVID BLACKFORD

R Magar

PAINTING & DECORATING

07811 772073

reg.magar@gmail.com

Home & Commercial. Interior
& Exterior. High Quality at
Competitive Prices.

www.rmagar-painter.com

K&S

**Kent and Sussex
IT Services**

Supporting Small Businesses
and Home Users

*Expert Advice . Tuition . Networking
Repairs . Health Checks . Security . Virus Removal
Back ups . Data Recovery*



01825 830881
07899 955289

www.kands-it.co.uk
enquiries@kands-it.co.uk

LOCAL ELECTRICIAN CHRIS MACRAE

**C MACRAE ELECTRICAL
ELECTRICAL WORKS & REPAIRS**

NICEIC REGISTERED

01892 669205

07885 458033

DIY Buddy

Need a hand with property maintenance?

Mayfield based experienced handyman
ready to help you with your DIY projects: -

Carpentry, landscape gardening, gardening
projects, house maintenance, woodwork
renovation, painting and decorating etc.

From small projects lasting a few hours to
more ambitious ideas lasting weeks call
Andrew if you need a hand.

Friendly, professional and extremely
hardworking.

Telephone 07909967052



Daryl Burton Carpenter/ Builder

All building works undertaken
including Bathrooms, Kitchens,
Wardrobes, House Maintenance and
Renovations

With over 30 years of experience in
the construction industry working
locally in Mayfield

Email: darylburton44@hotmail.com
TEL: 07790 790439



A Clean Sweep Ross Atabey & Son

Chimney sweeping - including smoke
test and certification

01435 812 153
07941 315214

Member of Association of Professional
Independent Chimney Sweeps

acleansweep009@gmail.com

www.facebook.com/acleansweeporam

J Lunnon Pools & Spas



J LUNNON & SON LIMITED

We have the experience
Call 01892 610610
For all your pool & spa needs.
Construction, Maintenance,
Breakdowns, Energy efficient
heating, Chemicals & Equipment
(In store water analysis)
Gas Safe (CORGI) & OFTEC
registered engineers
Domestic & Commercial
Indoor & Outdoors

J Lunnon & Son Ltd Master Plumbers



J LUNNON & SON LIMITED

Fully qualified Gas Safe (CORGI)
OFTEC oil engineers
Experienced in old & new boilers
Devoted to energy saving & renewable
energy sources

01892 610610

No call out charge
Boiler breakdowns/ system problems
No job too big or small
Outstanding reputation & accurate time
keeping
Fully insured up to £10,000,000
Just call us!

MAW Property Maintenance

Contact Miles on 01435 868823 07496 124 736



Internal and External Decorating.

AND: Carpentry, Guttering, UPVC Cleaning, Drain Rodding, Floor and Wall Tiling, Patio Pointing and Jet Cleaning, Panel Fences, Kitchen and Bathroom unit make-overs.....and much more.

Handyman Services - no job too small

Fully AXA Insured

rats **mice** **bedbugs**
ants
moth **fleas**
bees **woodworm**
wasps **squirrels** **cockroaches**
birds

• domestic & commercial

• service contracts

• unmarked vehicles

• senior citizen
concessions



National Pest Technicians Association

go pest

fast, effective, reliable same day service

Call: 01323 811011

www.gopest.co.uk e:info@gopest.co.uk
pepperham, ripe, lewes, sussex bn8 6aw

Traditional Mole, Mice, Mink Rabbit and Squirrel catcher

(No poisons used)

Traditional methods only

PETER KING

Home 01892 520287

Mobile 07432 813614

pkingmoles@outlook.com

Mayfield and Five Ashes



**Pressure Washing
Services**

We clean

- Driveways & patios
- Solar panels
- Property exteriors
- Horse boxes
- Cladding

Contact : 07872 170586

Email: pm_french85@live.co.uk

Visit: www.pmfservices.co.uk

PMF Services on Facebook



HAPPY NEW YEAR!

We're delighted to be entering 2024 with exciting plans for brand new food and cocktail menus, events, tribute acts, giveaways – not to mention more information and bookings for our brand new vineyard, White Shark Vineyard!

We know you've probably had your fill of food and drink over Christmas, but we've got an extensive menu from light bites, to hearty mains and stunning desserts – there's something for everyone.

Book your table at elitepubs.com

 [the.lazy.fox.markcross](https://www.instagram.com/the.lazy.fox.markcross)  [thelazyfoxmarkcross](https://www.facebook.com/thelazyfoxmarkcross)

GLYNDE PLACE CONCERT SERIES 2024

with BBC RADIO 3 NEW GENERATION ARTISTS

LAURA VAN DER
HEIJDEN *cello*
with
JAMS
COLEMAN *guitar*

A. SCHNITKE
N. BOULANGER
G. WALKER
C. DEBUSSY
C. FRANK

F. SCHUBERT
C. DEBUSSY
F. CHOPIN



ALIM
BEISENBAYEV *piano*



CONSONE STRING
QUARTET

F.J. HAYDN
W.A. MOZART
K. CZERNY



27 April - Laura van der Heijden & Jams Coleman
25 May - Alim Beisenbayev
22 June - Consone String Quartet



Tickets, info and other events - glyndeplace.co.uk

MAYFIELD FESTIVAL OF

MUSIC & ARTS



26-12
APR MAY '24

BOX OFFICE NOW OPEN

MAYFIELDFESTIVAL.CO.UK



Scarlett's

Frocks
&
Threads

2 Church View, High St, Mayfield TN20 6AB

01435 873520

www.scarlettsfrocksandthreads.co.uk

Bridal ♥ Prom



This is my year to... move house!



Book a free, no obligation, market appraisal on 01435 873 999

PROPERTY PROFESSIONALS FOR OVER 120 YEARS



**Lambert
& Foster**

sussex@lambertandfoster.co.uk | www.lambertandfoster.co.uk

Professionally endorsed for your peace of mind



arla | propertymark

naea | propertymark

THE SENIOR CITIZENS' CHRISTMAS PARTY HOSTED BY THE MAYFIELD BONFIRE SOCIETY

